
Hydraulic fluid power — Mounting dimensions for single rod cylinders, 25 MPa (250 bar) series

*Transmissions hydrauliques — Dimensions d'interchangeabilité des
vérins 25 MPa (250 bar) à simple tige*

STANDARDSISO.COM : Click to view the full PDF of ISO 6022:2006



PDF disclaimer

This PDF file may contain embedded typefaces. In accordance with Adobe's licensing policy, this file may be printed or viewed but shall not be edited unless the typefaces which are embedded are licensed to and installed on the computer performing the editing. In downloading this file, parties accept therein the responsibility of not infringing Adobe's licensing policy. The ISO Central Secretariat accepts no liability in this area.

Adobe is a trademark of Adobe Systems Incorporated.

Details of the software products used to create this PDF file can be found in the General Info relative to the file; the PDF-creation parameters were optimized for printing. Every care has been taken to ensure that the file is suitable for use by ISO member bodies. In the unlikely event that a problem relating to it is found, please inform the Central Secretariat at the address given below.

STANDARDSISO.COM : Click to view the full PDF of ISO 6022:2006

© ISO 2006

All rights reserved. Unless otherwise specified, no part of this publication may be reproduced or utilized in any form or by any means, electronic or mechanical, including photocopying and microfilm, without permission in writing from either ISO at the address below or ISO's member body in the country of the requester.

ISO copyright office
Case postale 56 • CH-1211 Geneva 20
Tel. + 41 22 749 01 11
Fax + 41 22 749 09 47
E-mail copyright@iso.org
Web www.iso.org

Published in Switzerland

Foreword

ISO (the International Organization for Standardization) is a worldwide federation of national standards bodies (ISO member bodies). The work of preparing International Standards is normally carried out through ISO technical committees. Each member body interested in a subject for which a technical committee has been established has the right to be represented on that committee. International organizations, governmental and non-governmental, in liaison with ISO, also take part in the work. ISO collaborates closely with the International Electrotechnical Commission (IEC) on all matters of electrotechnical standardization.

International Standards are drafted in accordance with the rules given in the ISO/IEC Directives, Part 2.

The main task of technical committees is to prepare International Standards. Draft International Standards adopted by the technical committees are circulated to the member bodies for voting. Publication as an International Standard requires approval by at least 75 % of the member bodies casting a vote.

Attention is drawn to the possibility that some of the elements of this document may be the subject of patent rights. ISO shall not be held responsible for identifying any or all such patent rights.

ISO 6022 was prepared by Technical Committee ISO/TC 131, *Fluid power systems*, Subcommittee SC 3, *Cylinders*.

This second edition cancels and replaces the first edition (ISO 6022:1981 and ISO 8137:1986), which have been technically revised.

Introduction

In hydraulic fluid power systems, power is transmitted and controlled through a liquid under pressure within an enclosed circuit.

One component of such systems is the fluid power cylinder. This is a device that converts power into linear mechanical force and motion. It consists of a movable element, i.e. a piston and piston rod, operating within a cylindrical bore.

STANDARDSISO.COM : Click to view the full PDF of ISO 6022:2006

Hydraulic fluid power — Mounting dimensions for single rod cylinders, 25 MPa (250 bar) series

1 Scope

This International Standard establishes mounting dimensions for hydraulic cylinders for use at 25 MPa [250 bar¹⁾], as required for interchangeability of these cylinders.

NOTE This International Standard allows manufacturers of hydraulic equipment flexibility in the design of 25 MPa (250 bar) cylinders and does not restrict technical development; however, it does provide basic guidelines.

2 Normative references

The following referenced documents are indispensable for the application of this document. For dated references, only the edition cited applies. For undated references, the latest edition of the referenced document (including any amendments) applies.

ISO 1179-1²⁾, *Connections for general use and fluid power — Ports and stud ends with ISO 228-1 threads with elastomeric or metal-to-metal sealing — Part 1: Threaded ports*

ISO 3320, *Fluid power systems and components — Cylinder bores and piston rod diameters — Metric series*

ISO 4395, *Fluid power systems and components — Cylinders — Piston rod thread dimensions and types*

ISO 5598³⁾, *Fluid power systems and components — Vocabulary*

ISO 6099, *Fluid power systems and components — Cylinders — Identification code for mounting dimensions and mounting types*

ISO 6149-1⁴⁾, *Connections for fluid power and general use — Ports and stud ends with ISO 261 threads and O-ring sealing — Part 1: Ports with O-ring seal in truncated housing*

ISO 6162-1, *Hydraulic fluid power — Flange connectors with split or one-piece flange clamps and metric or inch screws — Part 1: Flange connectors for use at pressures of 3,5 MPa (35 bar) to 35 MPa (350 bar), DN 13 to DN 127*

ISO 6162-2, *Hydraulic fluid power — Flange connectors with split or one-piece flange clamps and metric or inch screws — Part 2: Flange connectors for use at pressures of 35 MPa (350 bar) to 40 MPa (400 bar), DN 13 to DN 51*

1) 1 bar = 0,1 MPa = 10⁵ Pa; 1MPa = 1 N/mm²

2) To be published. (Revision of ISO 1179:1981)

3) To be published. (Revision of ISO 5598:1985)

4) To be published. (Revision of ISO 6149-1:1993)

ISO 6164, *Hydraulic fluid power — Four-screw, one-piece square-flange connections for use at pressures of 25 MPa and 40 MPa (250 bar and 400 bar)*

ISO 8132⁵⁾, *Hydraulic fluid power — Single rod cylinders, 16 MPa (160 bar) medium and 25 MPa (250 bar) series — Mounting dimensions for accessories*

3 Terms and definitions

For the purposes of this document, the terms and definitions given in ISO 5598 apply.

4 Dimensions

4.1 Select mounting dimensions for cylinders manufactured in accordance with this International Standard from Figures 1 to 4 and Tables 1 to 4 inclusive.

4.2 Select dimensions for ports and flanges from Table 5 and the relevant International Standards cited therein.

4.3 All dimensions and mounting types in this International Standard are labelled with codes in accordance with ISO 6099.

5 Bore sizes

This International Standard covers the following bore sizes, in millimetres, in accordance with ISO 3320:

50 — 63 — 80 — 100 — 125 — 140 — 160 — 180 — 200 — 250 — 320

6 Mounting types

This International Standard includes the following mounting types:

- MF3: Head, circular flange (see Figure 2 and Table 2)
- MF4: Cap, circular flange (see Figure 2 and Table 2)
- MP3: Cap, fixed plain eye (see Figure 3 and Table 3)
- MP4: Cap, detachable plain eye (see Figure 3 and Table 3)
- MP5: Cap, fixed eye with spherical bearing (see Figure 3 and Table 3)
- MP6: Cap, detachable eye with spherical bearing (see Figure 3 and Table 3)
- MT4: Intermediate fixed or movable trunnion (male) (see Figure 4 and Table 4).

5) To be published. (Revision of ISO 8132:1986, ISO 6981:1992 and ISO 6982:1992)

7 Piston rod characteristics

7.1 This International Standard covers piston rods having a shouldered male thread end (see Figure 1 and Table 1 for basic dimensions).

7.2 For rod end types, see ISO 4395.

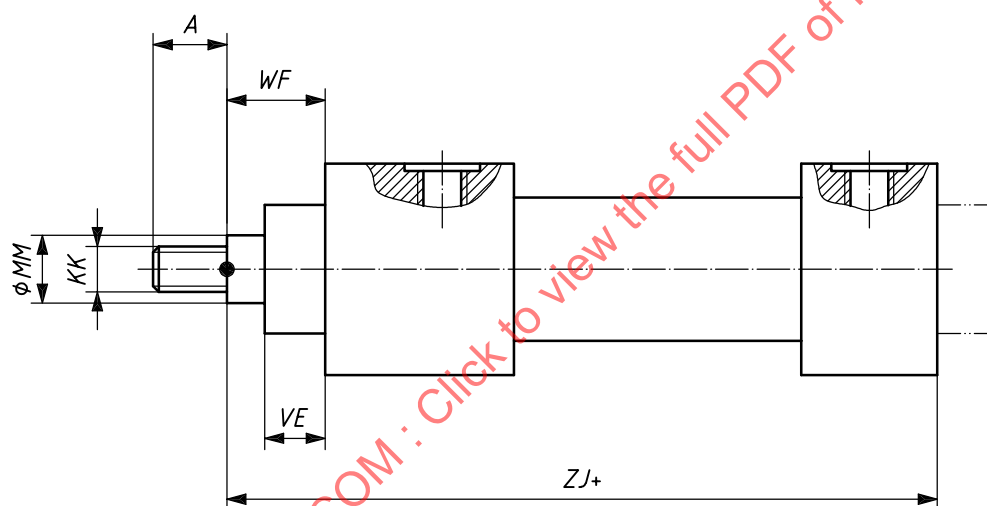
7.3 Accessory mounting dimensions shall be selected in accordance with ISO 8132.

8 Identification statement (reference to this International Standard)

Use the following statement in test reports, catalogues and sales literature when electing to comply with this International Standard:

“Hydraulic single rod cylinders for use at 25 MPa (250 bar) selected in accordance with ISO 6022:2006, *Hydraulic fluid power — Mounting dimensions for single rod cylinders, 25 MPa (250 bar) series.*”

STANDARDSISO.COM : Click to view the full PDF of ISO 6022:2006



For rod end types, see ISO 4395.

Figure 1 — General dimensions

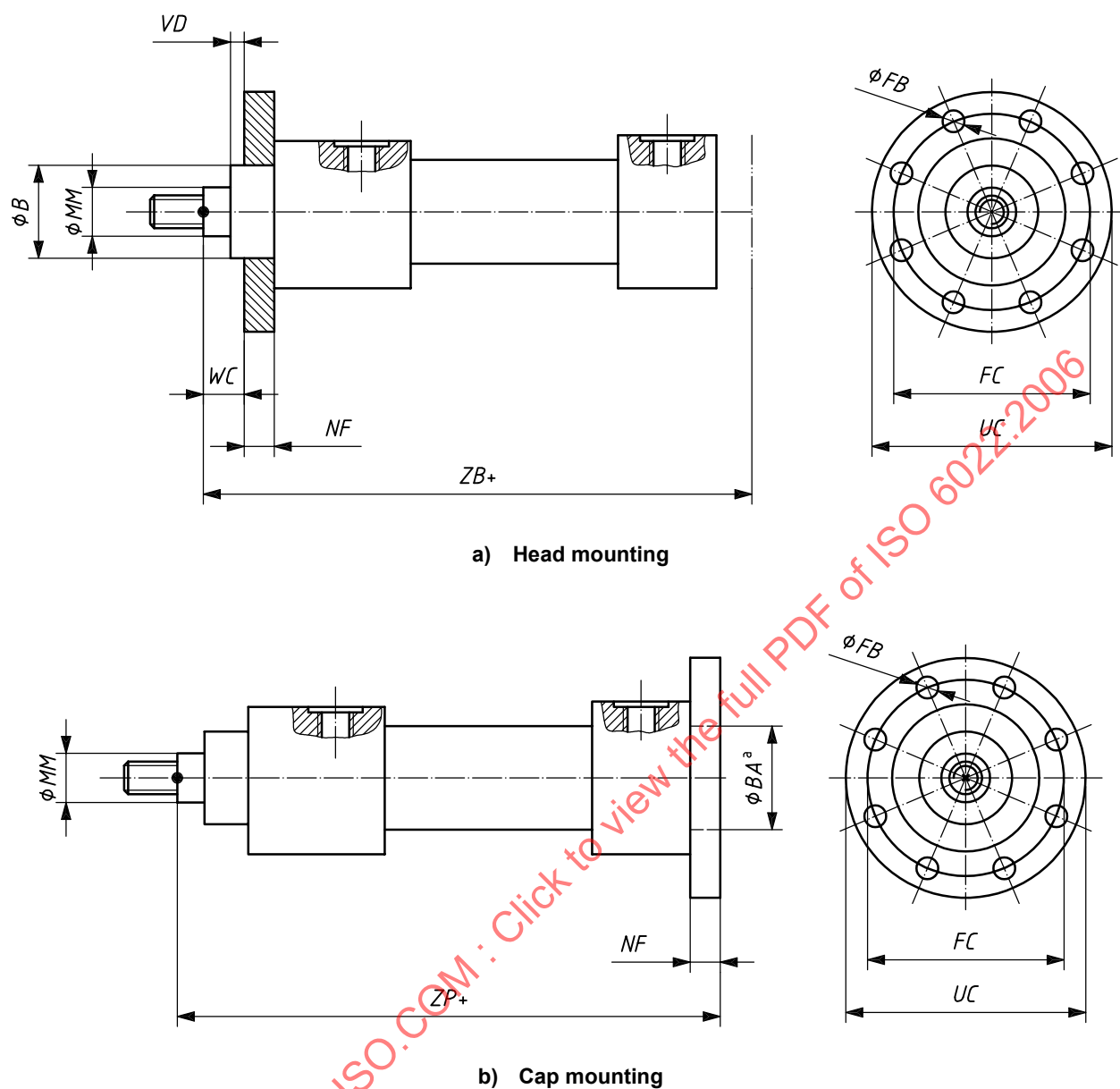
Table 1 — General dimensions

Dimensions in millimetres

Bore	MM ^a	ZJ ^b	KK ^a 6g	A max.	VE max.	WF ^b
50	32	240	M27 × 2	36	29	47
	36					
63	40	270	M33 × 2	45	32	53
	45					
80	50	300	M42 × 2	56	36	60
	56					
100	63	335	M48 × 2	63	41	68
	70					
125	80	390	M64 × 3	85	45	76
	90					
140	90	425	M72 × 3	90	48	76
	100					
160	100	460	M80 × 3	95	50	85
	110					
180	110	497	M90 × 3	106	55	95
	125					
200	125	540	M100 × 3	112	61	101
	140					
250	160	640	M125 × 4	125	71	113
	180					
320	200	750	M160 × 4	160	88	136
	220					

^a If other piston rod diameters or other threads are required, use those identified in ISO 3320 and ISO 4395.

^b Tolerances for dimensions ZJ and WF are dependent on stroke; see Table 6.



a Optional.

Figure 2 — MF3 — Head, circular flange and MF 4 — Cap, circular flange

Table 2 — Dimensions of circular flange mountings MF3 and MF4

Dimensions in millimetres

Bore	<i>FB</i> H13	<i>FC</i> js13	<i>VD</i> min.	<i>WC</i> ^a	<i>ZP</i> ^a	<i>ZB</i> max.	<i>B, BA</i> H8 / f8	<i>UC</i> max.	<i>NF</i> js13
50	8 × Ø13,5	132	4	22	265	244	63	160	25
63	8 × Ø13,5	150	4	25	298	274	75	180	28
80	8 × Ø17,5	180	4	28	332	305	90	215	32
100	8 × Ø22	212	5	32	371	340	110	260	36
125	8 × Ø22	250	5	36	430	396	132	300	40
140	8 × Ø26	285	5	36	465	430	145	340	40
160	8 × Ø26	315	5	40	505	467	160	370	45
180	8 × Ø33	355	5	45	550	505	185	425	50
200	8 × Ø33	385	5	45	596	550	200	455	56
250	8 × Ø39	475	8	50	703	652	250	545	63
320	8 × Ø45	600	8	56	830	764	320	680	80

^a Tolerances for dimensions *WC* and *ZP* are dependent on stroke; see Table 6.

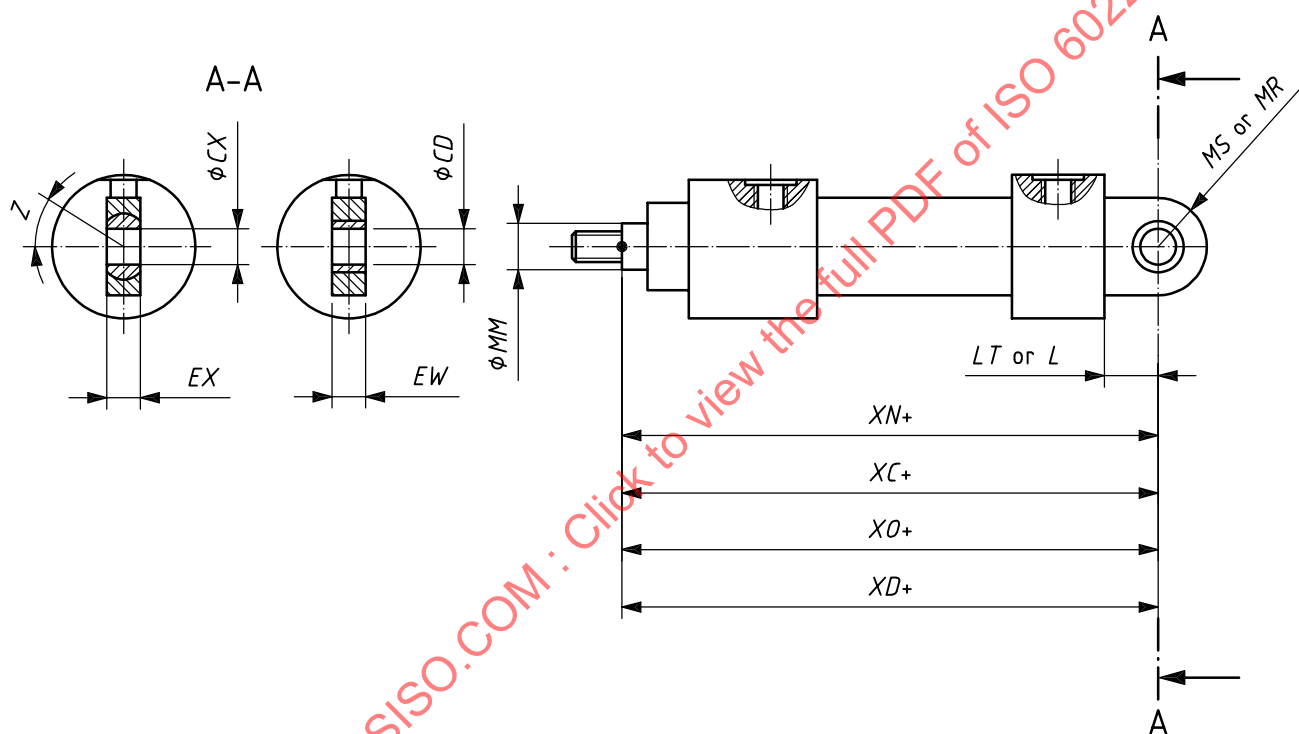


Figure 3 — MP3 — Cap, fixed plain eye, MP4 — Cap, detachable plain eye, MP5 — Cap, fixed eye with spherical bearing and MP6 — Cap, detachable eye with spherical bearing

Table 3 — Dimensions of cap eye mountings MP3, MP4, MP5 and MP6

Dimensions in millimetres

Bore	<i>CD</i> ^a	<i>CX</i> ^b	<i>EW</i> ^a or <i>EX</i> ^b	<i>L</i> ^a or <i>LT</i> ^b	<i>MR</i> ^a or <i>MS</i> ^b	<i>XC</i> , <i>XD</i> , <i>XO</i> or <i>XN</i> ^{c,d}	Tilting angle <i>Z</i> min.
	H9	H7	h12	min.	max.		
50	32	32	32	40	40	305	4°
63	40	40	40	50	50	348	4°
80	50	50	50	63	63	395	4°
100	63	63	63	71	71	442	4°
125	80	80	80	90	90	520	4°
140	90	90	90	113	113	580	4°
160	100	100	100	112	112	617	4°
180	110	110	110	135	135	690	4°
200	125	125	125	160	160	756	4°
250	160	160	160	200	200	903	4°
320	200	200	200	250	250	1080	4°

^a The dimensions *CD*, *EW*, *L* and *MR* are valid for mounting types MP3 and MP4.

^b The dimensions *CX*, *EX*, *LT* and *MS* are valid for mounting types MP5 and MP6.

^c Tolerances for dimensions *XC*, *XD*, *XO* or *XN* are dependent on stroke; see Table 6.

^d The dimension *XC* is valid for mounting type MP3, the dimension *XD* is valid for mounting type MP4, the dimension *XO* is valid for mounting type MP5 and the dimension *XN* is valid for mounting type MP6.

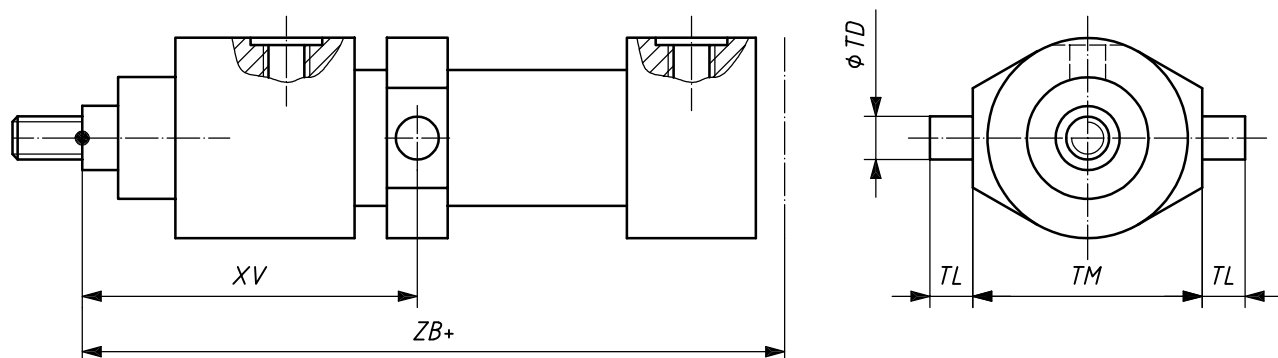


Figure 4 — MT4 — Intermediate fixed or movable trunnion (male)

Table 4 — Dimensions of intermediate male trunnion mounting MT4

Dimensions in millimetres

Bore	TD f8	TL js13	TM h12	XV^a	ZB max.
50	32	25	112	Variable. Users should consult the manufacturer for minimum and maximum values	244
63	40	32	125		274
80	50	40	150		305
100	63	50	180		340
125	80	63	224		396
140	90	70	265		430
160	100	80	280		467
180	110	90	320		502
200	125	100	335		550
250	160	125	425		652
320	200	160	530		764

^a Tolerances for dimensions XV are dependent on stroke; see Table 6.