

NFPA® 265

Standard Methods  
of Fire Tests for  
Evaluating Room  
Fire Growth Contribution  
of Textile or Expanded Vinyl  
Wall Coverings on Full Height  
Panels and Walls

2015 Edition



NFPA®, 1 Batterymarch Park, Quincy, MA 02169-7471, USA  
An International Codes and Standards Organization

## **IMPORTANT NOTICES AND DISCLAIMERS CONCERNING NFPA® STANDARDS**

### **NOTICE AND DISCLAIMER OF LIABILITY CONCERNING THE USE OF NFPA STANDARDS**

NFPA® codes, standards, recommended practices, and guides (“NFPA Standards”), of which the document contained herein is one, are developed through a consensus standards development process approved by the American National Standards Institute. This process brings together volunteers representing varied viewpoints and interests to achieve consensus on fire and other safety issues. While the NFPA administers the process and establishes rules to promote fairness in the development of consensus, it does not independently test, evaluate, or verify the accuracy of any information or the soundness of any judgments contained in NFPA Standards.

The NFPA disclaims liability for any personal injury, property or other damages of any nature whatsoever, whether special, indirect, consequential or compensatory, directly or indirectly resulting from the publication, use of, or reliance on NFPA Standards. The NFPA also makes no guaranty or warranty as to the accuracy or completeness of any information published herein.

In issuing and making NFPA Standards available, the NFPA is not undertaking to render professional or other services for or on behalf of any person or entity. Nor is the NFPA undertaking to perform any duty owed by any person or entity to someone else. Anyone using this document should rely on his or her own independent judgment or, as appropriate, seek the advice of a competent professional in determining the exercise of reasonable care in any given circumstances.

The NFPA has no power, nor does it undertake, to police or enforce compliance with the contents of NFPA Standards. Nor does the NFPA list, certify, test, or inspect products, designs, or installations for compliance with this document. Any certification or other statement of compliance with the requirements of this document shall not be attributable to the NFPA and is solely the responsibility of the certifier or maker of the statement.

### **REMINDER: UPDATING OF NFPA STANDARDS**

Users of NFPA codes, standards, recommended practices, and guides (“NFPA Standards”) should be aware that NFPA Standards may be amended from time to time through the issuance of Tentative Interim Amendments or corrected by Errata. An official NFPA Standard at any point in time consists of the current edition of the document together with any Tentative Interim Amendment and any Errata then in effect.

In order to determine whether an NFPA Standard has been amended through the issuance of Tentative Interim Amendments or corrected by Errata, visit the Document Information Pages on NFPA’s website. The Document Information Pages provide up-to-date, document specific information including any issued Tentative Interim Amendments and Errata.

To access the Document Information Page for a specific NFPA Standard, go to <http://www.nfpa.org/docinfo> to choose from the list of NFPA Standards or use the search feature on the right to select the NFPA Standard number (e.g., NFPA 101). In addition to posting all existing Tentative Interim Amendments and Errata, the Document Information Page also includes the option to sign-up for an “Alert” feature to receive an email notification when new updates and other information are posted regarding the document.

## IMPORTANT NOTICES AND DISCLAIMERS CONCERNING NFPA® STANDARDS

### ADDITIONAL NOTICES AND DISCLAIMERS

#### Updating of NFPA Standards

Users of NFPA codes, standards, recommended practices, and guides (“NFPA Standards”) should be aware that these documents may be superseded at any time by the issuance of new editions or may be amended from time to time through the issuance of Tentative Interim Amendments or corrected by Errata. An official NFPA Standard at any point in time consists of the current edition of the document together with any Tentative Interim Amendments and any Errata then in effect. In order to determine whether a given document is the current edition and whether it has been amended through the issuance of Tentative Interim Amendments or corrected through the issuance of Errata, consult appropriate NFPA publications such as the National Fire Codes® Subscription Service, visit the NFPA website at [www.nfpa.org](http://www.nfpa.org), or contact the NFPA at the address listed below.

#### Interpretations of NFPA Standards

A statement, written or oral, that is not processed in accordance with Section 6 of the Regulations Governing the Development of NFPA Standards shall not be considered the official position of NFPA or any of its Committees and shall not be considered to be, nor be relied upon as, a Formal Interpretation.

#### Patents

The NFPA does not take any position with respect to the validity of any patent rights referenced in, related to, or asserted in connection with an NFPA Standard. The users of NFPA Standards bear the sole responsibility for determining the validity of any such patent rights, as well as the risk of infringement of such rights, and the NFPA disclaims liability for the infringement of any patent resulting from the use of or reliance on NFPA Standards.

NFPA adheres to the policy of the American National Standards Institute (ANSI) regarding the inclusion of patents in American National Standards (“the ANSI Patent Policy”), and hereby gives the following notice pursuant to that policy:

**NOTICE:** The user’s attention is called to the possibility that compliance with an NFPA Standard may require use of an invention covered by patent rights. NFPA takes no position as to the validity of any such patent rights or as to whether such patent rights constitute or include essential patent claims under the ANSI Patent Policy. If, in connection with the ANSI Patent Policy, a patent holder has filed a statement of willingness to grant licenses under these rights on reasonable and nondiscriminatory terms and conditions to applicants desiring to obtain such a license, copies of such filed statements can be obtained, on request, from NFPA. For further information, contact the NFPA at the address listed below.

#### Law and Regulations

Users of NFPA Standards should consult applicable federal, state, and local laws and regulations. NFPA does not, by the publication of its codes, standards, recommended practices, and guides, intend to urge action that is not in compliance with applicable laws, and these documents may not be construed as doing so.

#### Copyrights

NFPA Standards are copyrighted. They are made available for a wide variety of both public and private uses. These include both use, by reference, in laws and regulations, and use in private self-regulation, standardization, and the promotion of safe practices and methods. By making these documents available for use and adoption by public authorities and private users, the NFPA does not waive any rights in copyright to these documents.

Use of NFPA Standards for regulatory purposes should be accomplished through adoption by reference. The term “adoption by reference” means the citing of title, edition, and publishing information only. Any deletions, additions, and changes desired by the adopting authority should be noted separately in the adopting instrument. In order to assist NFPA in following the uses made of its documents, adopting authorities are requested to notify the NFPA (Attention: Secretary, Standards Council) in writing of such use. For technical assistance and questions concerning adoption of NFPA Standards, contact NFPA at the address below.

#### For Further Information

All questions or other communications relating to NFPA Standards and all requests for information on NFPA procedures governing its codes and standards development process, including information on the procedures for requesting Formal Interpretations, for proposing Tentative Interim Amendments, and for proposing revisions to NFPA standards during regular revision cycles, should be sent to NFPA headquarters, addressed to the attention of the Secretary, Standards Council, NFPA, 1 Batterymarch Park, P.O. Box 9101, Quincy, MA 02269-9101; email: [stds\\_admin@nfpa.org](mailto:stds_admin@nfpa.org)

For more information about NFPA, visit the NFPA website at [www.nfpa.org](http://www.nfpa.org). All NFPA codes and standards can be viewed at no cost at [www.nfpa.org/freeaccess](http://www.nfpa.org/freeaccess).

Copyright © 2014 National Fire Protection Association®. All Rights Reserved.

## NFPA® 265

### Standard Methods of

## Fire Tests for Evaluating Room Fire Growth Contribution of Textile or Expanded Vinyl Wall Coverings on Full Height Panels and Walls

### 2015 Edition

This edition of NFPA 265, *Standard Methods of Fire Tests for Evaluating Room Fire Growth Contribution of Textile or Expanded Vinyl Wall Coverings on Full Height Panels and Walls*, was prepared by the Technical Committee on Fire Tests. It was issued by the Standards Council on November 11, 2014, with an effective date of December 1, 2014, and supersedes all previous editions. This edition of NFPA 265 was approved as an American National Standard on December 1, 2014.

This edition of NFPA 265 was approved as an American National Standard on December 1, 2014.

### Origin and Development of NFPA 265

The danger of using carpet-like textile coverings on walls and ceilings is well known, and these coverings have been recognized as a major contributing factor in many fires. Research conducted by the Fire Research Laboratory of the University of California at Berkeley and the American Textile Manufacturers Institute produced a report, "Room Fire Experience of Textile Wall Coverings," that indicated that consideration of only the flame spread rating as measured by NFPA 255, *Standard Method of Test of Surface Burning Characteristics of Building Materials*, might not reliably predict the fire behavior of textile wall coverings.

The proposed standard was intended to fill a void and complement the series of interior finish fire tests that were being referenced in NFPA 101, *Life Safety Code*, and other codes. The standard created a testing method that addressed the recognized hazards of using textile materials for wall coverings by supplying a means to evaluate the performance characteristics under specified fire exposure conditions and providing a valid repeatable and reproducible fire test method.

The 1998 edition was revised to include current practices used in testing laboratories. Requirements for the measurement of smoke obscuration were also added. These changes were directly associated with the revisions to the 1997 edition of NFPA 101, *Life Safety Code*, on interior finishes.

The 2002 edition was revised to comply with the *Manual of Style for NFPA Technical Committee Documents* regarding standardization of format.

The 2007 edition was revised to include new requirements for visual documentation. Specific protocols and other related requirements were added for video and photographic equipment. Revisions were also made to the test procedure, and what was known as the Method A Test Protocol in previous editions was moved to Annex C. Method A is a screening protocol and was deemed not to be equivalent to Method B, which tests three fully lined walls.

The 2011 edition was revised to include expanded vinyl wall coverings. New requirements were added to Section 5.1 to provide more guidance on specimen mounting.

The 2015 edition has been updated to include new requirements for specimen descriptions and to address adhesives used in panels constructed at the test facility.

## Technical Committee on Fire Tests

**Barry L. Badders, Jr.,** *Chair*  
Southwest Research Institute, TX [RT]

**Scott W. Adams,** Park City Fire Service District, UT [E]  
Rep. International Fire Marshals Association  
**Farid Alfawakhiri,** American Iron and Steel Institute, IL [M]  
**Jesse J. Beitel,** Hughes Associates, Inc., MD [SE]  
**James A. Burns,** New York State Department, NY [E]  
Rep. Firemen's Association of the State of New York  
**Gordon H. Damant,** Inter-City Testing & Consulting  
Corp. of California, CA [SE]  
**Scott E. Dillon,** Crane Engineering, IL [SE]  
**William E. Fitch,** Phyrefish.com, FL [SE]  
**Marcelo M. Hirschler,** GBH International, CA [SE]  
**Paul A. Hough,** Armstrong World Industries, Inc., PA [M]  
**Mohammed M. Khan,** FM Global, MA [I]

**William E. Koffel,** Koffel Associates, Inc., MD [SE]  
**Richard T. Long, Jr.,** Exponent, Inc., MD [M]  
Rep. Upholstered Furniture Action Council  
**Michael E. Luna,** Intertek Testing Services, TX [RT]  
**Andre W. Marshall,** University of Maryland, MD [SE]  
**Rodney A. McPhee,** Canadian Wood Council, Canada [M]  
**Kathleen A. Newman,** Firetect, CA [M]  
**David T. Sheppard,** U.S. Bureau of Alcohol, Tobacco,  
Firearms, & Explosives, MD [RT]  
**Dwayne E. Sloan,** UL LLC, NC [RT]  
**Kuma Sumathipala,** American Wood Council, DC [M]  
**Robert A. Wessel,** Gypsum Association, MD [M]

### Alternates

**Erik H. Anderson,** Koffel Associates, Inc., MD [SE]  
(Alt. to W. E. Koffel)  
**Richard J. Davis,** FM Global, MA [I]  
(Alt. to M. M. Khan)  
**Timothy Earl,** GBH International, MI [SE]  
(Alt. to M. M. Hirschler)  
**Sam W. Francis,** American Wood Council, PA [M]  
(Alt. to K. Sumathipala)  
**Stephen P. Fuss,** U.S. Bureau of Alcohol, Tobacco,  
Firearms, & Explosives, MD [RT]  
(Alt. to D. T. Sheppard)  
**Marc L. Janssens,** Southwest Research Institute, TX [RT]  
(Alt. to B. L. Badders, Jr.)

**Arthur J. Parker,** Hughes Associates, Inc., MD [SE]  
(Alt. to J. J. Beitel)  
**Stanislav I. Stoliarov,** University of Maryland, MD [SE]  
(Alt. to A. W. Marshall)  
**Ineke Van Zeeland,** Canadian Wood Council, Canada [M]  
(Alt. to R. A. McPhee)  
**Robert J. Wills,** American Iron and Steel Institute, AL [M]  
(Alt. to F. Alfawakhiri)  
**Joe Ziolkowski,** American Furniture Manufacturers  
Association, NC [M]  
(Alt. to R. T. Long, Jr.)

### Nonvoting

**Robert H. Barker,** American Fiber Manufacturers  
Association, VA [M]  
Rep. American Fiber Manufacturers Association

**Rohit Khanna,** U.S. Consumer Product Safety  
Commission, MD [C]

**Tracy L. Vecchiarelli,** NFPA Staff Liaison

*This list represents the membership at the time the Committee was balloted on the final text of this edition. Since that time, changes in the membership may have occurred. A key to classifications is found at the back of the document.*

NOTE: Membership on a committee shall not in and of itself constitute an endorsement of the Association or any document developed by the committee on which the member serves.

**Committee Scope:** This Committee shall have primary responsibility for documents on fire testing procedures, for reviewing existing fire test standards and recommending appropriate action to NFPA, for recommending the application of and advising on the interpretation of acceptable test standards for fire problems of concern to NFPA technical committees and members, and for acting in a liaison capacity between NFPA and the committees of other organizations writing fire test standards. This Committee does not cover fire tests that are used to evaluate extinguishing agents, devices, or systems.

## Contents

<b>Chapter 1 Administration</b> .....	<b>265- 4</b>	<b>Chapter 8 Calibration</b> .....	<b>265-11</b>
1.1 Scope .....	265- 4	8.1 Calibration and Documentation of Ignition Source and Test Equipment .....	265-11
1.2 Purpose .....	265- 4	8.2 Calibration .....	265-12
1.3 Application .....	265- 4	8.3 Smoke Measurement Calibration .....	265-13
1.4 Summary of Method .....	265- 4	8.4 Gas Analyzers Calibration .....	265-13
<b>Chapter 2 Referenced Publications</b> .....	<b>265- 4</b>	<b>Chapter 9 Test Procedure</b> .....	<b>265-13</b>
2.1 General .....	265- 4	9.1 Method .....	265-13
2.2 NFPA Publications. (Reserved) .....	265- 5	9.2 Procedure .....	265-13
2.3 Other Publications .....	265- 5	<b>Chapter 10 Calculations</b> .....	<b>265-13</b>
2.4 References for Extracts in Mandatory Sections .....	265- 5	10.1 Flow Rate Equations .....	265-13
<b>Chapter 3 Definitions</b> .....	<b>265- 5</b>	10.2 Smoke Measurement Equations .....	265-14
3.1 General .....	265- 5	10.3 Release Rate of Combustion Gases .....	265-14
3.2 NFPA Official Definitions .....	265- 5	10.4 Symbols .....	265-14
3.3 General Definitions .....	265- 5	<b>Chapter 11 Documentation</b> .....	<b>265-15</b>
<b>Chapter 4 Test Equipment</b> .....	<b>265- 5</b>	11.1 Report .....	265-15
4.1 Ignition Source .....	265- 5	11.2 Materials .....	265-15
4.2 Compartment Geometry and Construction .....	265- 6	11.3 Burner Gas Flow .....	265-15
<b>Chapter 5 Specimen Mounting and Installation</b> ...	<b>265- 6</b>	11.4 Time History of the Total Heat Flux to Floor .....	265-15
5.1 Specimen Mounting .....	265- 6	11.5 Time History of the Gas Temperature .....	265-15
5.2 Specimen Installation .....	265- 7	11.6 Time History of the Rate of Heat Release of the Fire .....	265-15
5.3 Conditioning of Specimen .....	265- 7	11.7 Time History of the Fire Growth .....	265-15
<b>Chapter 6 Environmental Conditions</b> .....	<b>265- 7</b>	11.8 Time History of Smoke Obscuration .....	265-15
6.1 Fire Room Environment .....	265- 7	11.9 Discussion of Performance .....	265-15
6.2 Building Environment .....	265- 7	<b>Annex A Explanatory Material</b> .....	<b>265-15</b>
<b>Chapter 7 Instrumentation</b> .....	<b>265- 7</b>	<b>Annex B Acceptance Criteria</b> .....	<b>265-17</b>
7.1 Room Instrumentation .....	265- 7	<b>Annex C Method A Test Protocol</b> .....	<b>265-18</b>
7.2 Canopy Hood and Exhaust Duct .....	265- 9	<b>Annex D Informational References</b> .....	<b>265-18</b>
7.3 Instrumentation in Exhaust Duct .....	265- 9	<b>Index</b> .....	<b>265-20</b>

**NFPA 265****Standard Methods of****Fire Tests for Evaluating Room Fire Growth Contribution of Textile or Expanded Vinyl Wall Coverings on Full Height Panels and Walls****2015 Edition**

**IMPORTANT NOTE:** *This NFPA document is made available for use subject to important notices and legal disclaimers. These notices and disclaimers appear in all publications containing this document and may be found under the heading "Important Notices and Disclaimers Concerning NFPA Standards." They can also be obtained on request from NFPA or viewed at [www.nfpa.org/disclaimers](http://www.nfpa.org/disclaimers).*

NOTICE: An asterisk (\*) following the number or letter designating a paragraph indicates that explanatory material on the paragraph can be found in Annex A.

A reference in brackets [ ] following a section or paragraph indicates material that has been extracted from another NFPA document. As an aid to the user, the complete title and edition of the source documents for extracts in mandatory sections of the document are given in Chapter 2 and those for extracts in informational sections are given in Annex D. Extracted text may be edited for consistency and style and may include the revision of internal paragraph references and other references as appropriate. Requests for interpretations or revisions of extracted text shall be sent to the technical committee responsible for the source document.

Information on referenced publications can be found in Chapter 2 and Annex D.

**Chapter 1 Administration****1.1 Scope.**

**1.1.1** This standard describes a test method for determining the contribution of textile or expanded vinyl wall coverings to room fire growth during specified fire exposure conditions.

**1.1.2\*** This test method shall be used to evaluate the flammability characteristics of textile or expanded vinyl wall coverings where such materials constitute the exposed interior surfaces of buildings and demountable, relocatable, full height partitions used in open building interiors.

**1.1.3** This test method shall not be used to evaluate the fire resistance of assemblies, nor shall it be used to evaluate the effect of fires originating within a wall assembly.

**1.1.4\*** This test method shall not be used for the evaluation of floor or ceiling finishes.

**1.1.5\*** This test method shall not apply to fabric-covered, lower-than-ceiling-height, freestanding, prefabricated panel furniture systems.

**1.2 Purpose.**

**1.2.1** This test method shall measure certain fire performance characteristics of textile or expanded vinyl wall covering materials in an enclosure under specified fire exposure conditions.

**1.2.2** This test method shall determine the potential extent to which the textile or expanded vinyl wall covering materials contribute to fire growth in a room and the potential for fire spread beyond the room under the particular conditions simulated.

**1.3 Application.**

**1.3.1** This test method shall provide all of the following:

- (1) Extent of fire growth in the test room
- (2) Rate of heat release by the specimen
- (3) Total heat released by the specimen
- (4) Time to flashover in the test room, if it occurs
- (5) Time to flame extension beyond the doorway of the test room, if it occurs
- (6) Total heat flux incident to the floor of the test room
- (7) Upper level gas temperature in the test room
- (8) Smoke obscuration, as determined in the exhaust duct
- (9) Production of carbon monoxide, as determined in the exhaust duct
- (10) Emissions of other combustion gases, as determined in the exhaust duct

**1.3.2** This test method shall not provide data that can be generalized to apply to rooms or spaces of different shapes, sizes, and ventilation. However, this test method shall provide a general ranking of wall covering materials for use in making judgments, provided it is understood that the conditions observed in the test might or might not be repeated in actual exposures of the tested wall coverings to fire.

**1.3.3** This test method shall not provide either of the following:

- (1) The full information concerning toxicity of combustion gases
- (2) Fire resistance of wall-ceiling systems

**1.4\* Summary of Method.**

**1.4.1** The sample shall be tested by using a corner test exposure with the specimens mounted on three fully lined walls of the test compartment (Method B).

**1.4.1.1** These test methods shall use a gas burner to produce a diffusion flame to expose the walls in the corner of a room 2.44 m × 3.66 m × 2.44 m (8 ft × 12 ft × 8 ft).

**1.4.1.2** The burner shall produce a prescribed rate of heat output of 40 kW for 5 minutes followed by 150 kW for 10 minutes, for a total exposure period of 15 minutes.

**1.4.1.3** The contribution of the textile or expanded vinyl wall covering to fire growth shall be measured by constant monitoring of the incident heat flux on the center of the floor, the temperature of the gases in the upper part of the room, the rate of heat release, the smoke release, and the time to flashover.

**1.4.1.4** The test shall be conducted while providing natural ventilation to the room, through a single doorway of 0.8 m × 2.0 m (30 in. × 80 in.).

**1.4.1.5** The combustion products shall be collected in a hood feeding into a chamber that is connected to an exhaust duct in which measurements of the gas velocity, temperature, and concentrations of selected gases are made.

**1.4.2** Flashover shall be considered to have occurred when any two of the conditions identified in Chapter 9 have been attained.

**Chapter 2 Referenced Publications**

**2.1 General.** The documents or portions thereof listed in this chapter are referenced within this standard, and shall be considered part of the requirements of this document.





## 2.2 NFPA Publications. (Reserved)

## 2.3 Other Publications.

**2.3.1 ASTM Publications.** ASTM International, 100 Barr Harbor Drive, P.O. Box C700, West Conshohocken, PA 19428-2959.

ASTM C1186, *Standard Specification for Flat Fiber-Cement Sheets*, 2008 (2012).

ASTM C1396/C1396M, *Specification for Gypsum Board*, 2013.

ASTM E136, *Standard Test Method for Behavior of Materials in a Vertical Tube Furnace at 750°C*, 2012.

**2.3.2 CSA Publications.** Canadian Standards Association, 5060 Spectrum Way, Mississauga, ON, L4W 5N6, Canada.

CSA Standard O121, *Douglas Fir Plywood*, 2008 (R2013).

**2.3.3 NIST Publications.** National Institute of Standards and Technology, 100 Bureau Drive, Gaithersburg, MD 20899-1070.

NIST Voluntary Product Standard PS 1, *Structural Plywood*, 2009.

## 2.3.4 Other Publications.

*Merriam-Webster's Collegiate Dictionary*, 11th edition, Merriam-Webster, Inc., Springfield, MA, 2003.

## 2.4 References for Extracts in Mandatory Sections.

NFPA 286, *Standard Methods of Fire Tests for Evaluating Contribution of Wall and Ceiling Interior Finish to Room Fire Growth*, 2015 edition.

## Chapter 3 Definitions

**3.1 General.** The definitions contained in this chapter shall apply to the terms used in this standard. Where terms are not defined in this chapter or within another chapter, they shall be defined using their ordinarily accepted meanings within the context in which they are used. *Merriam-Webster's Collegiate Dictionary*, 11th edition, shall be the source for the ordinarily accepted meaning.

## 3.2 NFPA Official Definitions.

**3.2.1 Shall.** Indicates a mandatory requirement.

**3.2.2 Should.** Indicates a recommendation or that which is advised but not required.

**3.2.3 Standard.** An NFPA Standard, the main text of which contains only mandatory provisions using the word "shall" to indicate requirements and that is in a form generally suitable for mandatory reference by another standard or code or for adoption into law. Nonmandatory provisions are not to be considered a part of the requirements of a standard and shall be located in an appendix, annex, footnote, informational note, or other means as permitted in the NFPA Manuals of Style. When used in a generic sense, such as in the phrase "standards development process" or "standards development activities," the term "standards" includes all NFPA Standards, including Codes, Standards, Recommended Practices, and Guides.

## 3.3 General Definitions.

**3.3.1 Average Upper Gas Layer Temperature.** Temperature based on the average of the four ceiling quadrant thermo-

couples and the center of the room ceiling thermocouple. [286, 2015]

**3.3.2\* Expanded Vinyl Wall Covering.** Wall covering consisting of a woven textile backing, an expanded vinyl base coat layer, and a nonexpanded vinyl skin coat.

**3.3.3\* Textile.** A fabric made of natural or man-made fibers. [286, 2015]

## Chapter 4 Test Equipment

### 4.1 Ignition Source.

**4.1.1** The ignition source for the test shall be a gas burner with a nominal 305 mm × 305 mm (12 in. × 12 in.) porous top surface as shown in Figure 4.1.1.

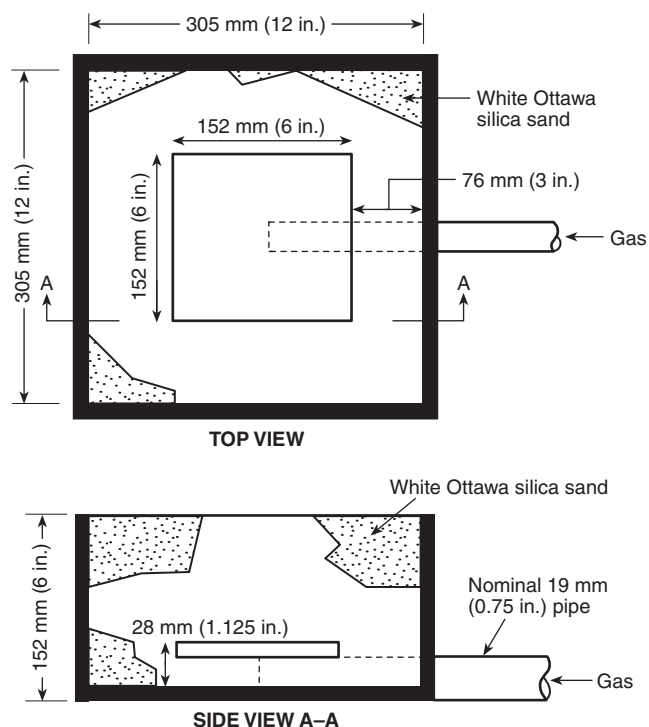


FIGURE 4.1.1 Gas Burner.

**4.1.2** The material through which the gas is supplied shall be a layer of white Ottawa silica sand not less than 102 mm (4 in.) deep for providing the horizontal surface through which the gas is supplied.

**4.1.3** The top surface of the burner, through which the gas is applied, shall be located horizontally 305 mm (12 in.) above the floor.

**4.1.4** The burner enclosure shall be located such that the outer edge of the sand surface is located 50 mm (2 in.) from both walls, in a corner of the room, opposite the door.

**4.1.5** The gas supply to the burner shall be of C.P. grade propane (99 percent purity or better).



**4.1.5.1** The burner shall be capable of producing a net heat output of 40 kW  $\pm$  1 kW for 5 minutes followed by a net heat output of 150 kW  $\pm$  5 kW for 10 minutes.

**4.1.5.2\*** Flow rates shall be calculated using the net heat of combustion of propane or 85 MJ/m<sup>3</sup> (2280 Btu/ft<sup>3</sup>) at standard conditions of 20°C (68°F) temperature and 101 kPa (14.7 psi) absolute pressure.

**4.1.5.3** The gas flow rate shall be metered throughout the test with an accuracy of  $\pm$ 3 percent.

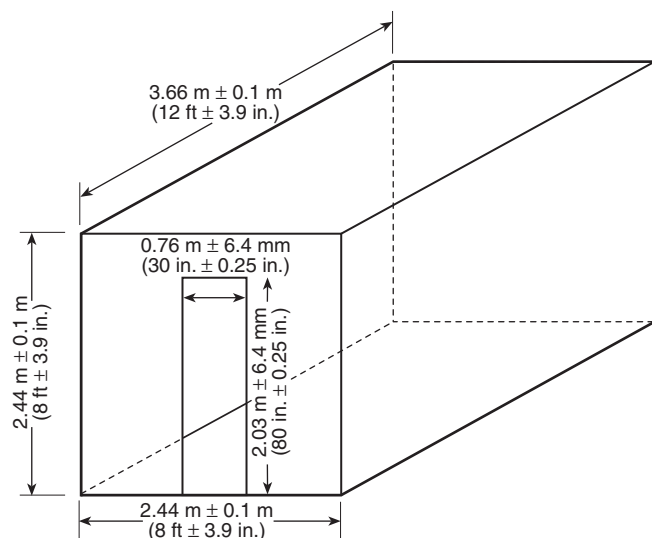
**4.1.6\*** The heat output from the burner shall be controlled to  $\pm$ 5 percent.

**4.1.7** The burner design shall allow switching from 40 kW to 150 kW within 10 seconds.

**4.1.8** The burner shall be ignited by a pilot burner or a remotely controlled spark igniter.

**4.1.9** Burner controls shall be provided for automatic gas supply shutoff if flameout occurs.

**4.2 Compartment Geometry and Construction.** Compartment geometry and construction shall be as shown in Figure 4.2.



**FIGURE 4.2 Interior Room Dimensions and Interior Doorway Dimensions.**

**4.2.1\*** The interior dimensions of the fire room floor when the specimens are in place shall measure 2.44 m  $\pm$  0.1 m  $\times$  3.66 m  $\pm$  0.1 m (8 ft  $\pm$  3.9 in.  $\times$  12 ft  $\pm$  3.9 in.).

**4.2.2** The finished ceiling shall be 2.44 m  $\pm$  0.1 m (8 ft  $\pm$  3.9 in.) above the floor.

**4.2.3** There shall be four walls at right angles defining the compartment, as shown in Figure 4.2.

**4.2.4\*** The room shall be placed indoors in an essentially draft-free, heated space large enough to ensure that there is no influence of the surroundings on the test fire.

**4.2.5** There shall be a doorway measuring 0.76 m  $\pm$  0.4 mm  $\times$  2.03 m  $\pm$  0.4 mm (30 in.  $\pm$  0.25 in.  $\times$  80 in.  $\pm$  0.25 in.) in the center of one of the 2.44 m  $\times$  2.44 m (8 ft  $\times$  8 ft) walls, and no other wall, floor, or ceiling openings that allow ventilation.

**4.2.6\*** The test compartment shall be a framed (with wood or metal studs) or concrete block structure.

**4.2.6.1** The inside surface of the walls, ceiling, and floor shall be of Type X gypsum wallboard or of calcium silicate board of 736 kg/m<sup>3</sup> (46 lb/ft<sup>3</sup>) density.

**4.2.6.2** The nominal thickness of the inside surface shall be at least 12 mm (0.5 in.).

**4.2.6.3** For each test, when the test is for wall systems only, a new section of uncoated and unpainted nominal 16 mm ( $\frac{5}{8}$  in.) gypsum wallboard, nominal 610 mm  $\times$  610 mm (2 ft  $\times$  2 ft), shall be installed in the ceiling at the wall corner intersection directly above the burner.

**4.2.7** The door frame shall be constructed to remain unchanged during the test period to a tolerance of  $\pm$ 1 percent in height and width.

## Chapter 5 Specimen Mounting and Installation

### 5.1 Specimen Mounting.

**5.1.1** Where wall coverings are intended to be applied to a substrate in actual end use, the test specimens shall consist of the wall coverings mounted on a substrate that is appropriate for the intended application as described in 5.1.3 through 5.1.9.

**5.1.2** Where wall coverings are used as part of prefabricated panels or demountable, relocatable, full-height partitions, the specimens shall consist of the prefabricated panel or the demountable, relocatable, full-height partitions with the wall coverings mounted in the same manner as the actual finished product.

**5.1.2.1** Where panels or partitions specified in 5.1.2 are constructed at the test facility, any adhesives used shall be the same as those used by the manufacturer.

**5.1.2.2** Where panels or partitions specified in 5.1.2 are specified by the manufacturer to include any coatings or other components, such components shall be reproduced in the specimens.

**5.1.3\*** Where an adhesive is used to attach a wall covering to a substrate, the adhesive specified by the manufacturer shall be used for construction of the test specimen in accordance with the wall covering manufacturer's application instructions.

**5.1.4 Wall Coverings Intended to Be Applied Directly to a Noncombustible Wall Surface.** Where the wall coverings are intended to be applied directly to a noncombustible wall surface, the specimens shall consist of the wall covering mounted on a nominal 6 mm ( $\frac{1}{4}$  in.) thick fiber-cement board, complying with ASTM C1186, *Standard Specification for Flat Fiber-Cement Sheets, (Grade II)*, and passing ASTM E136, *Standard Test Method for Behavior of Materials in a Vertical Tube Furnace at 750°C*.

**5.1.5 Wall Coverings Intended to Be Applied over Gypsum Board.** Where the wall coverings are intended to be applied over gypsum board, the specimens shall consist of the wall covering mounted on a nominal 16 mm ( $\frac{5}{8}$  in.) thick Type X gypsum wallboard complying with ASTM C1396/C1396M, *Specification for Gypsum Board*.

**5.1.5.1** Where a wall covering has been tested using the test specimen described in 5.1.5 (over gypsum board), it shall not be required to be additionally tested mounted on a fiber-cement board in accordance with 5.1.4.

**5.1.6 Wall Coverings Intended to Be Applied over a Wood Substrate.** Where the wall coverings are intended to be applied over a wood substrate, the following shall apply:

- (1) The specimens shall consist of the wall covering mounted on untreated plywood with a face veneer of Douglas fir.
- (2) The plywood shall have the same thickness as the wood substrate used in actual installations and shall comply with NIST Voluntary Product Standard PS 1, *Structural Plywood*.
- (3) The plywood shall be marked with a grade stamp indicating that the plywood has been graded PS 1 A-B and is for exterior exposure.
- (4) The grade stamp shall be issued by a quality control agency.
- (5) The plywood shall be permitted to be stamped as conforming to CSA Standard O121, *Douglas Fir Plywood*.

**5.1.7\* Wall Coverings Intended to Be Applied over Substrates Other Than Wood, Gypsum Board, or Noncombustible Surfaces.** Where the wall coverings are intended to be applied over substrates other than wood, gypsum board, or noncombustible surfaces, the specimens shall consist of the wall covering mounted on the substrate to which it is to be applied for actual end use according to the adhesive and application method specified by the manufacturer.

**5.1.8 Wall Coverings Not Intended to Be Adhered Directly to a Wall Surface, but Intended to Be Otherwise Supported by Framing or a Track System.** Where the wall coverings are not intended to be adhered directly to a wall surface but are intended to be otherwise supported by framing or a track system, the specimens shall consist of the wall covering mounted for test in a manner that is representative of its installation. Both sides shall be tested where the system is not symmetrical and not intended to be attached to a wall.

**5.1.9** Where a wall covering exhibits a distinct direction, the wall covering shall be mounted such that the machine direction is vertical, unless the manufacturer indicates that a different method of mounting is to be used in actual installations.

**5.2 Specimen Installation.** The specimen assembly shall be installed on the interior wall surfaces of the test room as described in 5.2.1.

**5.2.1 Method B Test Protocol.** For the Method B test protocol, specimen assemblies shall be installed to cover fully both 2.44 m × 3.66 m (8 ft × 12 ft) walls and the 2.44 m × 2.44 m (8 ft × 8 ft) wall not having the door.

### 5.3 Conditioning of Specimen.

**5.3.1\*** Prior to testing, the mounted specimen shall be conditioned to equilibrium, as defined in 5.3.2, in an atmosphere at a temperature of 21°C ± 3°C (70°F ± 5°F) and a relative humidity of 50 percent ± 5 percent.

**5.3.2** Equilibrium shall be considered to have been reached when a representative piece of the specimen has achieved constant mass, which is reached when two successive weighing operations, carried out at an interval of 24 hours, do not differ by more than 0.1 percent of the mass of the test piece or 0.1 g (0.0035 oz), whichever is greater.

**5.3.3** The specimens shall be tested as soon as possible after removal from such conditions, if test room conditions differ from those in 5.3.1 and 5.3.2.

**5.3.4** The time between removal from conditioning room and start of testing shall be recorded as part of the test documentation.

## Chapter 6 Environmental Conditions

### 6.1 Fire Room Environment.

**6.1.1** The test building in which the fire room is located shall have vents for the discharge of combustion products and shall have provisions for fresh air intake, so that no oxygen-deficient air is introduced into the fire room during the test.

**6.1.2** Prior to the start of the test, the ambient air at the mid-height entrance to the compartment shall have a velocity of less than 0.5 m/s (100 ft/min) in any direction, as measured at a horizontal distance of 0.91 m (3 ft) from the center of the doorway.

**6.1.3** The following two ambient conditions shall be maintained:

- (1) The ambient temperature in the fire room, measured by one of the thermocouples in 7.1.2, shall be in the range of 18°C to 24°C (64°F to 75°F).
- (2) The ambient relative humidity in the fire room shall be 50 percent ± 5 percent.

### 6.2 Building Environment.

**6.2.1** The building shall be sized so that there is no smoke accumulation in the building below the level of the top of the fire compartment.

**6.2.2** The ambient temperature in the test building at locations around the fire compartment shall be above 4°C (40°F).

**6.2.3** The relative humidity shall be less than 75 percent for the duration of the test.

## Chapter 7 Instrumentation

**7.1 Room Instrumentation.** The instrumentation specified in 7.1.1 through 7.1.2 shall be provided for this test.

**7.1.1\* Heat Flux.** A total heat flux gauge (calorimeter) shall be mounted at a height of 26 mm ± 25 mm (1.1 in. ± 0.9 in.) above the floor surface, facing upward, in the geometric center of the test room as shown in Figure 7.1.1.

**7.1.1.1\*** The gauge shall be of the Gardon (foil) or Schmidt-Boelter (thermopile) type with a full-scale design range of 50 kW/m<sup>2</sup>.

**7.1.1.1.1** The target receiving radiation shall be a circular, flat surface not more than 15 mm (0.6 in.) in diameter and coated with a matte black finish, having a view angle of 180 degrees.

**7.1.1.1.2** The target shall be contained within a water-cooled body whose front face shall be of polished metal that is flat, coinciding with the plane of the target, and circular, with a diameter of not more than 50 mm (2 in.).

**7.1.1.2** The heat flux gauge shall have an accuracy of ± 3 percent and a repeatability of 0.5 percent.

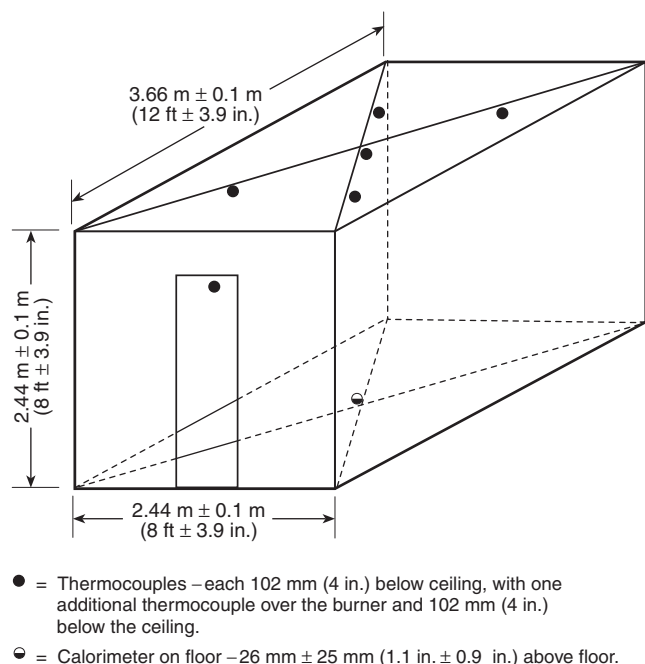


FIGURE 7.1.1 Thermocouple and Calorimeter Placement.

**7.1.1.3** During operation, the heat flux gauge shall be maintained at a constant temperature [ $\pm 3^{\circ}\text{C}$  ( $\pm 5^{\circ}\text{F}$ )] above the dew point by water supplied at a temperature of  $50^{\circ}\text{C}$  to  $65^{\circ}\text{C}$  ( $122^{\circ}\text{F}$  to  $149^{\circ}\text{F}$ ).

**7.1.1.4** The calibration of the heat flux gauge shall be checked, whenever required, by comparing the calibration with two similar instruments held as, and used exclusively as, reference standards, one of which is to be fully calibrated at yearly intervals.

**7.1.2 Thermocouples.** Bare Type K Chromel Alumel® thermocouples, 0.5 mm (20 mil) in diameter, shall be used at each required location as shown in Figure 7.1.1.

**7.1.2.1** The thermocouple wire within 13 mm (0.5 in.) of the bead shall be run along expected isotherms to minimize conduction errors.

**7.1.2.2\*** The insulation between the Chromel and Alumel wires shall be stable to a temperature not less than  $1100^{\circ}\text{C}$  ( $2000^{\circ}\text{F}$ ), or the wires shall be separated.

**7.1.2.3** A thermocouple shall be located in the interior plane of the door opening on the door centerline, 102 mm (4 in.) from the top.

**7.1.2.4** Thermocouples shall be located at six positions, 102 mm (4 in.) below the ceiling.

**7.1.2.4.1** These thermocouples shall be located at the center of the ceiling, at the center of each of the four ceiling quadrants, and directly over the center of the ignition burner.

**7.1.2.4.2** The thermocouples shall be mounted on supports or shall penetrate through the ceiling with their junctions 102 mm (4 in.) away from a solid surface.

**7.1.2.4.3** There shall be no attachments to the test specimens.

**7.1.2.4.4** Any ceiling penetration shall be just large enough to permit passage of the thermocouples.

**7.1.2.4.5** Spackling compound or ceramic fiber insulation shall be used to backfill the holes around the thermocouple wire.

**7.1.3 Paper Targets.** Two paper target flashover indicators consisting of a single piece of newsprint crumpled into an approximate 152 mm (6 in.) diameter ball shall be placed on the floor of the test room as shown in Figure 7.1.3.

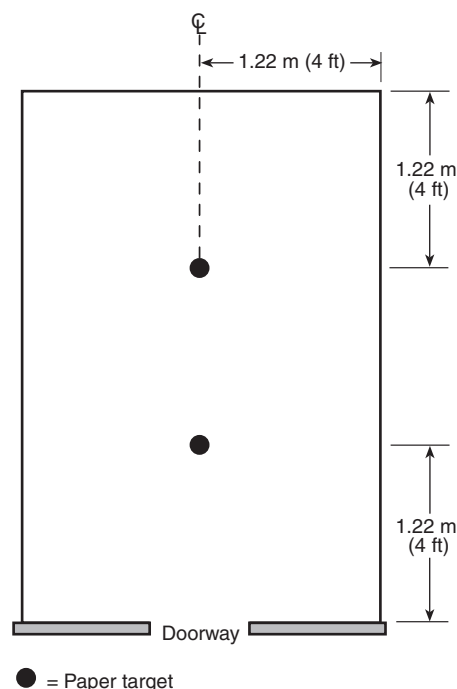


FIGURE 7.1.3 Plan View of Paper Target Arrangement.

**7.1.4\* Video and Photographic Equipment and Recording Procedures.** Video and photographic equipment shall be used to record the spread of fire and generation of smoke in the fire test room and the fire projection from the door of the fire test room as indicated in 7.1.4.1 through 7.1.4.4.2.

**7.1.4.1 Location and Level of Lighting in Test Room.** A nominal 300 watt, flood-type, quartz halogen lamp shall be positioned in the corner diametrically opposite the burner, near the floor level, and shall be aimed at the wall corner/ceiling intersection above the burner.

**7.1.4.2 Wall Markings.** The interior wall surfaces of the fire test room adjacent to the corner in which the burner is located shall be clearly marked with a 0.3 m (12 in.) grid.

**7.1.4.3 Video Recording.** A video camera with a manually adjustable iris, adjusted to prevent automatic closing of the iris opening due to brightness of the fire (at least 50 percent open), shall be used.

**7.1.4.3.1** A video monitor shall be used to determine when adjustments and compensation for the brightness of the ignition flames are needed.

**7.1.4.3.2** The camera mount shall be adjusted so that the camera lens is approximately 900 mm (3 ft) from the floor.

**7.1.4.3.3** The camera angle and magnifications shall be adjusted until the top of the doorway and the top of the burner are visible and the ceiling area directly above the fire is in full view.

**7.1.4.3.4** A timer depicting “elapsed time” shall be included in all videos. The timer shall be clearly visible throughout the test period. The timer shall be permitted to be integral to the video camera.

**7.1.4.3.5** Prior to ignition of the burner, the date and laboratory test report identification number shall be filmed. The video shall be started at least 30 seconds prior to ignition of the burner, and the video recording shall be continuous for the duration of the test period.

**7.1.4.4 Photographic Documentation.** A photographic record (still pictures) of the test shall be made.

**7.1.4.4.1** A timer depicting “elapsed time” shall be included in all photographs. The timer shall be clearly visible throughout the test period. The timer shall be permitted to be integral to the camera.

**7.1.4.4.2** Prior to ignition of the burner, the date and laboratory test report identification number shall be filmed. Color slides, photographs, or digital images shall be taken at intervals not exceeding 15 seconds for the first 3 minutes of the test and at intervals not exceeding 30 seconds thereafter for the duration of the test.

## **7.2 Canopy Hood and Exhaust Duct.**

**7.2.1** A hood shall be installed immediately adjacent to the door of the fire room.

**7.2.1.1** The bottom of the hood shall be level with the top surface of the room.

**7.2.1.2** The face dimensions of the hood shall be at least 2.44 m × 2.44 m (8 ft × 8 ft), and the depth shall be 1.1 m (3.5 ft).

**7.2.1.3** The hood shall feed into a chamber having a 0.91 m × 0.91 m (3 ft × 3 ft) cross-section.

**7.2.1.3.1** The chamber shall be a minimum height of 0.91 m (3 ft).

**7.2.1.3.2** The chamber height shall be permitted to be increased to a maximum of 1.8 m (6 ft) to satisfy building constraints.

**7.2.1.3.3** The exhaust duct connected to a chamber shall comply with all of the following:

- (1) It shall be at least 406 mm (16 in.) in diameter.
- (2) It shall be horizontal.
- (3) It shall be permitted to have a circular aperture of at least 305 mm (12 in.) at its entrance or mixing vanes in the duct as shown in Figure 7.2.1.3.3(a) and Figure 7.2.1.3.3(b).

**7.2.2** The hood shall have sufficient exhaust draft to collect all of the combustion products leaving the room.

**7.2.2.1** During the test, the exhaust draft shall be capable of moving up to 3.4 m<sup>3</sup>/s (7000 standard ft<sup>3</sup>/min), equivalent to 7.6 m<sup>3</sup>/s (16,100 ft<sup>3</sup>/min) at 399°C (750°F).

**7.2.2.2** Provision shall be made so that the exhaust draft can operate at 0.47 m<sup>3</sup>/s to 3.4 m<sup>3</sup>/s (1000 standard ft<sup>3</sup>/min to 7000 standard ft<sup>3</sup>/min).

**7.2.2.3** Mixing vanes shall be required in the duct if concentration gradients are found to exist.

**7.2.3** An alternative exhaust system design shall be permitted to be used if the design meets the requirements outlined in Chapter 8 and the performance requirements in 7.2.2.

## **7.3 Instrumentation in Exhaust Duct.**

**7.3.1** The exhaust collection system shall be constructed with all of the following requirements:

- (1) A blower
- (2) A steel hood
- (3) A duct
- (4) A bidirectional probe
- (5) A thermocouple(s)
- (6) An oxygen measurement system
- (7) A smoke obscuration measurement system (white light photocell lamp/detector or laser)
- (8) A combustion gas sampling and analysis system

**7.3.2\*** A bidirectional probe or an equivalent measuring system shall be used to measure gas velocity in the duct.

**7.3.2.1** A typical probe, shown in Figure 7.3.2.1, shall consist of a short stainless steel cylinder that is 44 mm (1.75 in.) long and has a 22 mm (0.875 in.) inside diameter with a solid diaphragm in the center.

**7.3.2.2** The pressure taps on either side of the diaphragm shall support the probe.

**7.3.2.3** The axis of the probe shall run along the centerline of the duct, 3.35 m (11 ft) downstream from the entrance.

**7.3.2.4** The taps shall be connected to a pressure transducer that shall be able to resolve pressure differences of 0.25 Pa (0.001 psi) in H<sub>2</sub>O.

**7.3.3** One pair of thermocouples shall be placed 3.35 m (11 ft) downstream of the entrance to the horizontal duct. The pair of thermocouples shall straddle the center of the duct and shall be separated 50 mm (2 in.) from each other as shown in Figure 7.2.1.3.3(a).

## **7.3.4 Sampling Line.**

**7.3.4.1\*** The sampling line tubes shall be constructed of a material that will not affect the concentration of the combustion gas species to be analyzed.

**7.3.4.2** The following sequence of the gas train, shown in Figure 7.3.4.2, shall be used:

- (1) Sampling probe
- (2) Soot filter
- (3) Cold trap
- (4) Gas path pump
- (5) Vent valve
- (6) Drying column
- (7) Flow controller
- (8) Oxygen analyzer

**7.3.4.3** The gas train shall also include spanning and zeroing facilities.

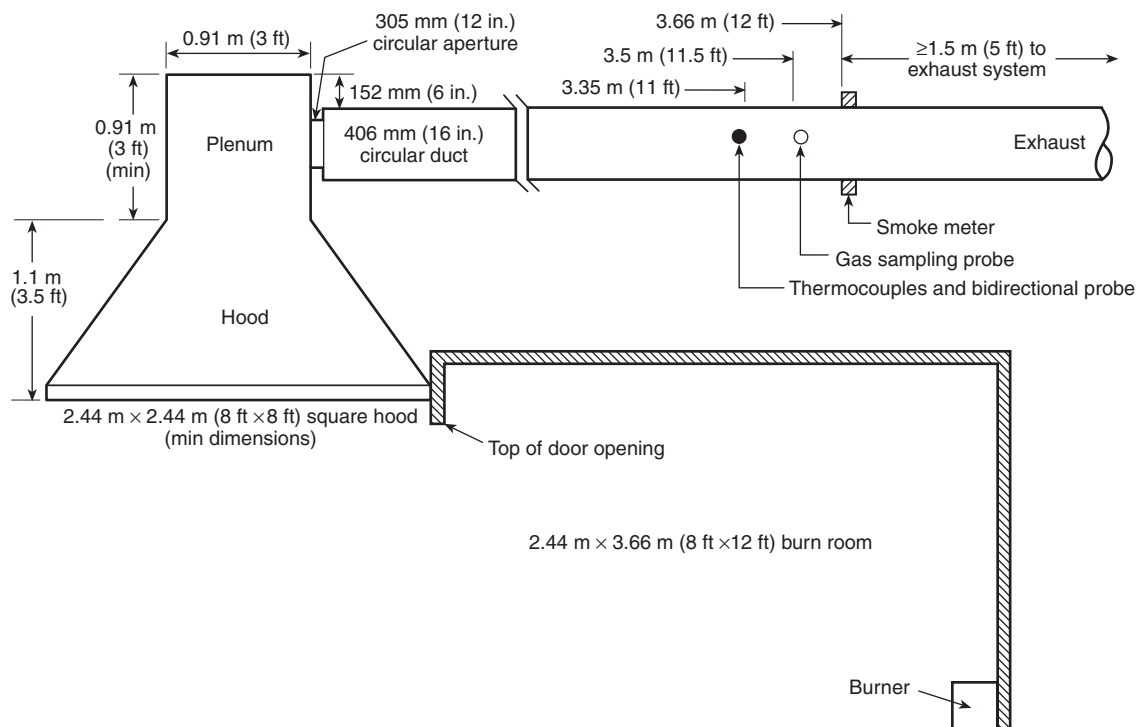


FIGURE 7.2.1.3.3(a) Canopy Hood and Exhaust Duct.

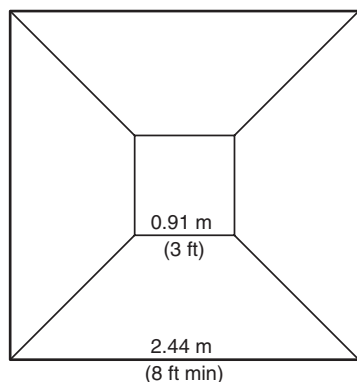


FIGURE 7.2.1.3.3(b) Plan View of Canopy Head.

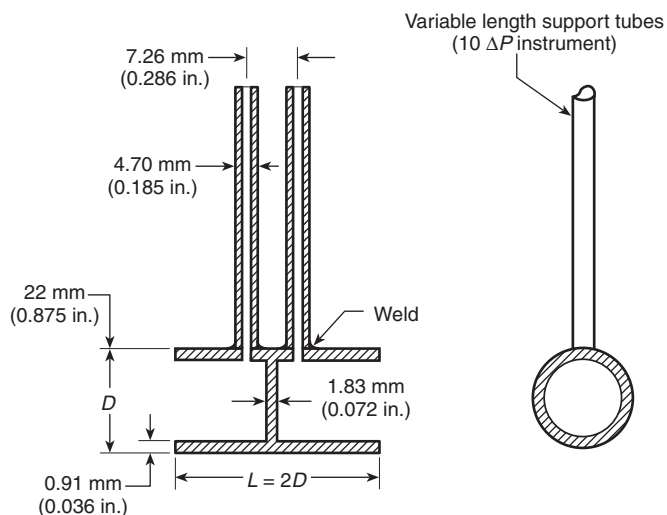


FIGURE 7.3.2.1 Bidirectional Probe.

**7.3.4.4\*** For each gas analyzer used, the system delay time shall be determined for the analyzer to reach a 90 percent response to a step change in the gas concentration.

**7.3.5\* Oxygen Concentration.** A gas sampling tube shall be located 3.5 m (11.5 ft) downstream from the entrance to the duct at the geometric center of the duct [to within 12.7 mm ( $\frac{1}{2}$  in.) of the center], to obtain a continuously flowing sample for determining the oxygen concentration of the exhaust gas as a function of time.

**7.3.5.1** A filter and cold trap shall be placed in the line ahead of the analyzer to remove particulates and water.

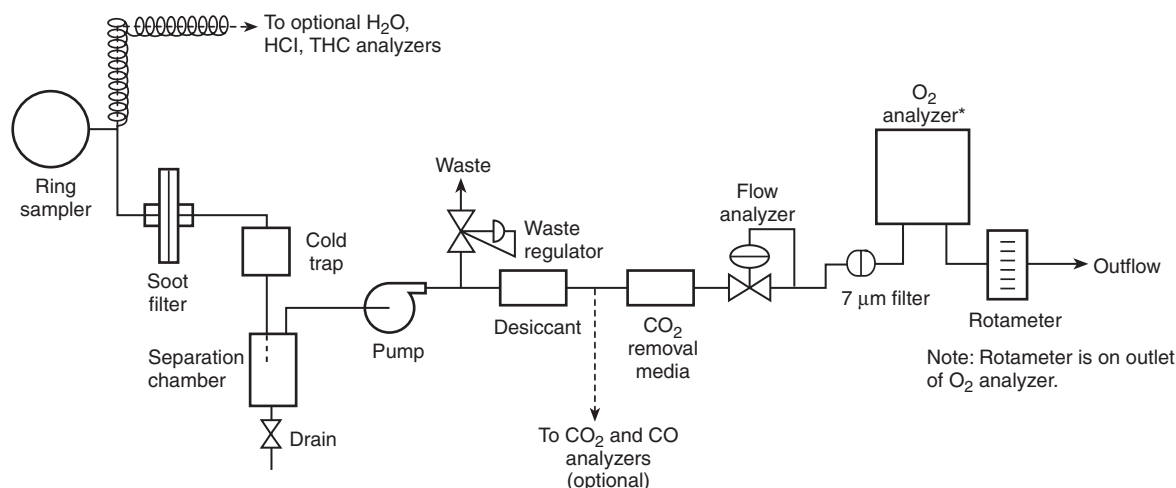
**7.3.5.2** The oxygen analyzer shall be of the paramagnetic or polarographic type.

**7.3.5.3** The oxygen analyzer shall be capable of measuring oxygen concentration in a range of 21 percent to 15 percent, with a relative accuracy of 50 ppm in this concentration range.

**7.3.5.4** The signal from the oxygen analyzer shall be within 5 percent of its final value and shall occur within 30 seconds of introducing a step change in composition of the gas stream flowing past the inlet to the sampling tube.

**7.3.5.5** The oxygen analyzer shall include an absolute-pressure transducer for gas pressure variations.





\* To include absolute-pressure transducer

**FIGURE 7.3.4.2 Schematic of Gas Train and Mass Train.**

**7.3.5.6** A rotameter shall be located on the outlet of the oxygen analyzer.

### 7.3.6 Carbon Dioxide Concentration.

**7.3.6.1** The gas sampling tube described in 7.3.5, or an alternative gas sampling tube at the same location, shall be used to provide a continuous sample for the measurement of the carbon dioxide concentration, by means of an analyzer with a range of 0 to 20 percent, with a maximum relative error of 2 percent of full scale.

**7.3.6.2** The total system-response time between the sampling inlet and the meter shall be no longer than 30 seconds to reach a value within 5 percent of the final value, after the introduction of a step change in composition of the gas stream flowing past the inlet to the sampling tube.

### 7.3.7 Carbon Monoxide Concentration.

**7.3.7.1** The gas sampling tube described in 7.3.5, or an alternative gas sampling tube at the same location, shall be used to provide a continuous sample for the measurement of the carbon monoxide concentration, by means of an analyzer with a range of 0 to 10 percent, with a maximum relative error of 2 percent of full scale.

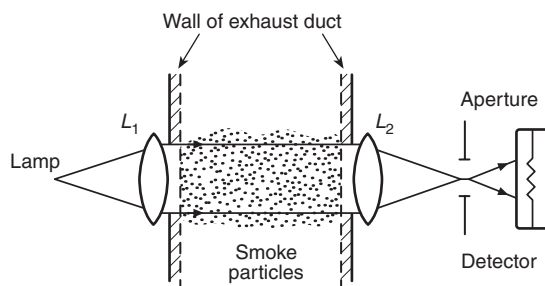
**7.3.7.2** The total system-response time between the sampling inlet and the meter shall be no longer than 30 seconds to reach a value within 5 percent of the final value, after the introduction of a step change in composition of the gas stream flowing past the inlet to the sampling tube.

### 7.3.8 Smoke Obscuration Measurement.

**7.3.8.1** An optical system shall be installed for measurement of light obscuration across the centerline of the exhaust duct.

**7.3.8.2** The optical density of the smoke shall be determined by measuring the light transmitted by a photometer system consisting of a white light source and a photocell/detector or a laser system for measurement of light obscuration across the centerline of the exhaust duct.

**7.3.8.2.1\*** A white light photometer system shall consist of a lamp, lenses, an aperture, and a photocell as shown in Figure 7.3.8.2.1.



**FIGURE 7.3.8.2.1 Optical System Using a White Light.**

**7.3.8.2.2** The system shall be constructed so that soot deposits on the optics during a test do not reduce the light transmission by more than 5 percent.

**7.3.8.3\*** A helium-neon laser system shall consist of silicon photodiodes as main beam and reference detectors, and of electronics to derive an extinction and to set a zero reading.

**7.3.8.3.1** A helium-neon laser system shall be designed for split-yoke mounting in two pieces that are rigidly coupled together but resiliently attached to the exhaust duct by means of refractory gasketing.

**7.3.8.3.2** A 0.5 mW to 2 mW helium-neon laser beam shall be projected horizontally across the exhaust duct as shown in Figure 7.3.8.3.2(a) and Figure 7.3.8.3.2(b).

## Chapter 8 Calibration

### 8.1 Calibration and Documentation of Ignition Source and Test Equipment.

**8.1.1** The following three instruments shall be calibrated with standard sources after initial installation:

- (1) Smoke meters
- (2) Flow or velocity transducers
- (3) Gas analyzers



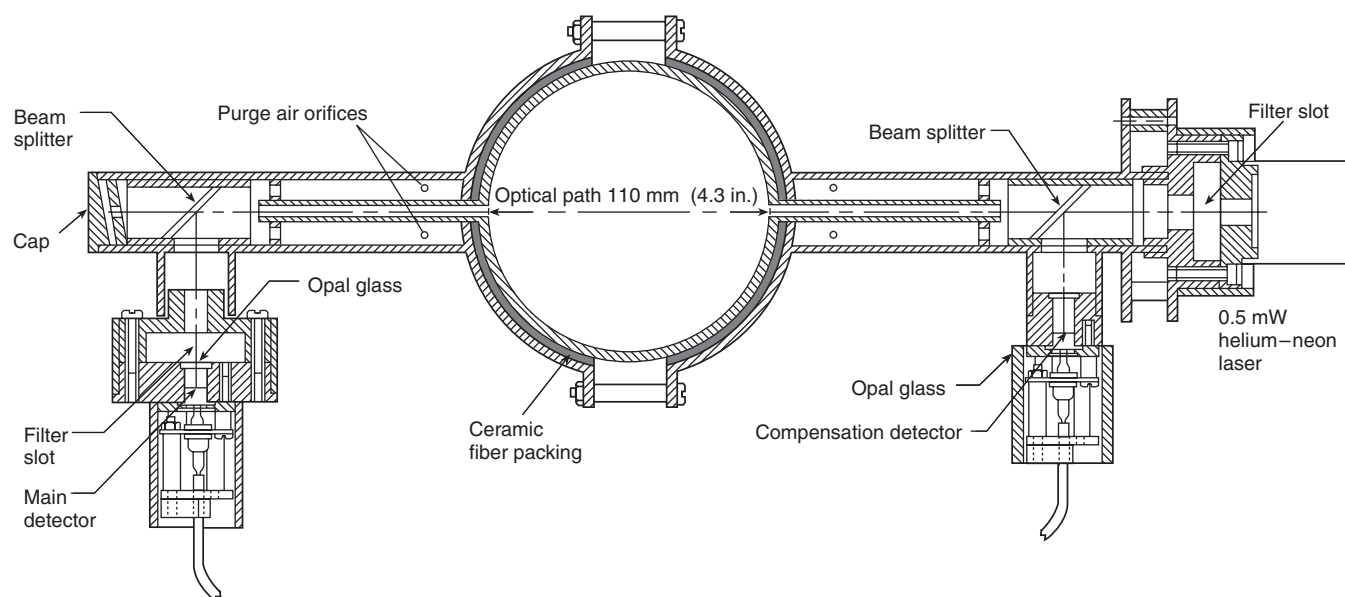


FIGURE 7.3.8.3.2(a) Laser Extinction Beam.

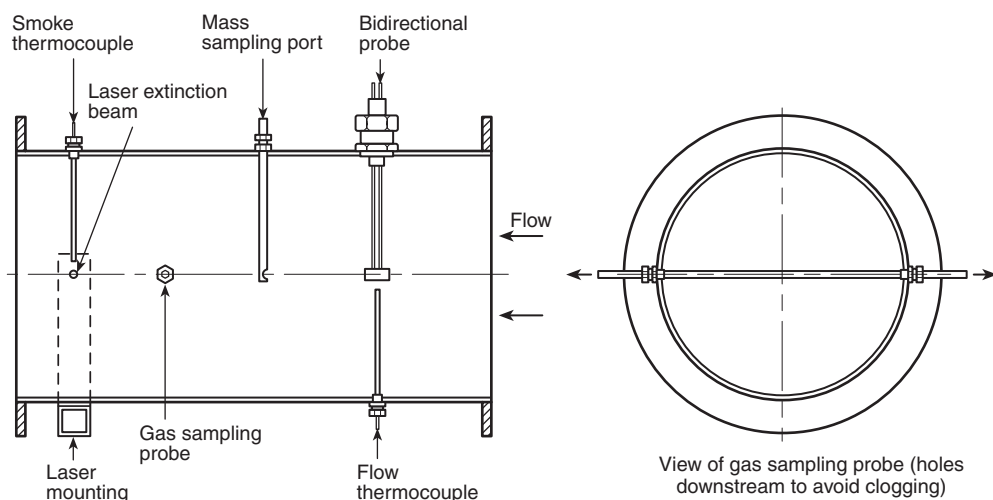


FIGURE 7.3.8.3.2(b) Recommendations for Mounting the Laser Beam and Other Instrumentation in Exhaust Duct.

**8.1.2** A calibration test shall have been performed prior to and within 30 days of any fire test, using the standard ignition source under the exhaust hood.

**8.1.3** The data resulting from a calibration test shall provide all of the following:

- (1) The output as a function of time, after the burner is activated, of all instruments normally used for the standard fire test
- (2) The maximum extension of the burner flame, as recorded by still photographs taken at 30-second intervals or continuous video recording
- (3) The temperature and velocity profiles across the duct cross-section at the location of the bidirectional probe
- (4) The differential pressure across the bidirectional probe

**8.1.4** The results obtained in 8.1.3(3) and 8.1.3(4) shall be used to determine the calibration factor,  $C$ , in the equation in 10.1.3.

**8.2\* Calibration.** The calibration procedure for heat release measurements shall be as follows:

- (1) Estimate an approximate value of the calibration factor  $C$  ( $C_{est}$ ) as the product of the cross-section of the duct (in square meters) multiplied by 22.1.
- (2) Burn propane, as described in 4.1.5, for not less than 15 minutes at a heat release rate of  $150 \text{ kW} \pm 5 \text{ kW}$ .
  - (a) Take measurements at intervals not greater than 6 seconds.
  - (b) The response of the system to a stepwise change of the heat output from the burner shall be a maximum of 12 seconds to 90 percent of final value.

- (c) Use a value of combustion expansion factor ( $\alpha$ ) (*see Section 10.4*), of energy ( $E$ ), and of heat of combustion ( $H_{t_{\text{comb}}}$ ) as follows:

$$\alpha = 1.084$$

$$E = 12.8 \text{ MJ/kg}$$

$$H_{t_{\text{comb}}} = 46.5 \text{ MJ/kg}$$

- (3) Calculate the total heat released and the corrected calibration factor  $C_{\text{est}}$  so that the total heat released, as determined by the oxygen consumption calculation shown in Chapter 10, agrees with the theoretical value obtained from measurement of the volumetric flow rate and weight loss of the fuel, to within  $\pm 5$  percent, by using the following equation:

[8.2]

$$C_{\text{corr}} = \frac{H_{t_{\text{comb}}} (\text{MJ/kg}) \times \text{mass fuel burnt (kg)}}{\int \dot{q} (\text{MW}) dt} = C_{\text{est}}$$

- (4) Use the corrected value of calibration factor for all tests.  
 (5) If the calibration factor does not agree, within  $\pm 5$  percent, with the value determined during the previous calibration, check the system for leaks or other problems before proceeding with the test.  
 (6) Correct any problem found during the system check and perform a new calibration in accordance with this chapter.

**8.3 Smoke Measurement Calibration.** The smoke measuring system shall be calibrated initially using two neutral density filters of significantly different values and also at 100 percent transmission.

**8.3.1** Once this calibration is set, no less than the zero value of extinction coefficient (100 percent transmission) shall be verified each day, prior to testing.

**8.3.2** If departure from the zero line is found at the end of a calibration test, the problem shall be corrected and a new calibration shall be performed in accordance with this chapter.

**8.4\* Gas Analyzers Calibration.** Gas analyzers shall be calibrated daily, prior to testing, using manufacturers' instructions.

## Chapter 9 Test Procedure

**9.1 Method.** Method B protocol specified in 1.4.1 shall be used.

**9.2 Procedure.** The test procedure shall be as follows:

- (1) Establish an initial volumetric flow rate of at least  $0.47 \text{ m}^3/\text{sec}$  ( $1000 \text{ standard ft}^3/\text{min}$ ) through the duct, then increase the volume flow rate to  $3.4 \text{ m}^3/\text{sec}$  ( $7000 \text{ standard ft}^3/\text{min}$ ) as required to keep the oxygen content above 14 percent and to capture all effluents from the burn room.
- (2) Turn on all sampling and recording devices and establish steady-state baseline readings for at least 2 minutes.
- (3) Ignite the gas burner.
- (4) Start the timer once burner ignition has been observed.
- (5) Increase the gas flow rate to provide a heat release rate of  $40 \text{ kW} \pm 1 \text{ kW}$  from the burner.
- (6) Continue the exposure at  $40 \text{ kW} \pm 1 \text{ kW}$  for 5 minutes  $\pm 10$  seconds.

- (7) Within 10 seconds after the 5-minute initial exposure, increase the gas flow rate to provide heat release rate of  $150 \text{ kW} \pm 5 \text{ kW}$ .
- (8) Continue the exposure of  $150 \text{ kW} \pm 5 \text{ kW}$  for 10 minutes  $\pm 10$  seconds.
- (9) Provide visual documentation in accordance with 7.1.4.
- (10) Record the occurrence of flashover when any two of the following conditions have been attained:
  - (a) Heat release rate exceeds 1 MW
  - (b) Heat flux at the floor exceeds  $20 \text{ kW/m}^2$
  - (c) Average upper layer temperature exceeds  $600^\circ\text{C}$  ( $1112^\circ\text{F}$ )
  - (d) Flames exit doorway
  - (e) A paper target on the floor autoignites
- (11) Shut off the ignition burner 15 minutes after start of the test, and terminate the test at that time.
- (12) Document damage after the test, using words, photographs, and drawings.

**9.2.1** The laboratory shall terminate the test whenever safety considerations dictate.

**9.2.2** If flashover occurs before the 15-minute period is complete, the laboratory shall be permitted to terminate the test.

## Chapter 10 Calculations

**10.1\* Flow Rate Equations.** The calculation methods described in this chapter shall be used to determine the rate of heat release.

**10.1.1** The mass flow rate through the duct shall be obtained from the velocity measured with a bidirectional probe (*see 7.3.2*).

**10.1.2\*** The mass flow rate shall be calculated using a measured velocity profile in the duct.

**10.1.3** The mass flow rate shall be calculated by using the following equation:

$$\dot{m}_e = C \sqrt{\frac{\Delta p}{T_e}} \quad [10.1.3]$$

**10.1.4\*** The oxygen depletion factor shall be calculated according to the following equation:

$$\phi = \frac{X_{\text{O}_2}^0 (1 - X_{\text{CO}_2} - X_{\text{CO}}) - X_{\text{O}_2} (1 - X_{\text{CO}_2}^0)}{X_{\text{O}_2}^0 (1 - X_{\text{O}_2} - X_{\text{CO}_2} - X_{\text{CO}})} \quad [10.1.4]$$

**10.1.5** The rate of heat release shall be calculated according to the following equation:

[10.1.5]

$$\dot{q} = \left[ E\phi - (E_{\text{CO}} - E) \frac{1 - \phi}{X_{\text{O}_2}} \left( \frac{X_{\text{CO}}}{X_{\text{O}_2}} \right) \right] \frac{M_{\text{O}_2}}{M_e} \left( \frac{\dot{m}}{1 + \phi(\alpha - 1)} \right) (X_{\text{O}_2}^0)$$

**10.1.6\*** The total heat released shall be calculated according to the following equation:

$$\text{THR} = \int \dot{q} dt \quad [10.1.6]$$

## 10.2 Smoke Measurement Equations.

**10.2.1** The extinction coefficient,  $k$ , shall be calculated from the following equation:

$$k = \frac{1}{L_p} \ln \left( \frac{I_o}{I} \right) \quad [10.2.1]$$

**10.2.2** The optical density per unit light path length shall be calculated according to the following equation:

$$OD = \frac{1}{D} \log \left( \frac{I_o}{I} \right) \quad [10.2.2]$$

**10.2.3** The volumetric flow rate at the smoke meter shall be calculated as the product of the mass flow rate and the temperature at the measurement point (bidirectional probe), corrected by the density of air at the standard temperature (273.15 K) and by the temperature, in K, as shown in the following equation:

$$\dot{V}_s = \dot{m}_e \left( \frac{T_e}{\rho_o 273.15} \right) = \frac{\dot{m}_e T_e}{353} \quad [10.2.3]$$

**10.2.4** The rate of smoke release shall be defined by the following equation:

$$RSR = \dot{V}_s k \quad [10.2.4]$$

**10.2.5** The total smoke released shall be defined by the following equation:

$$TSR = \int RSR \, dt \quad [10.2.5]$$

## 10.3 Release Rate of Combustion Gases.

**10.3.1 Carbon Monoxide.** The release rate of carbon monoxide shall be calculated from the following equation:

$$\dot{m}_{CO} = \frac{X_{CO} (1 - X_{O_2}^0 - X_{CO_2}^0) \left( \frac{M_{CO}}{M_a} \right) \dot{m}_e}{1 - X_{O_2} - X_{CO_2} - X_{CO}} \frac{1}{1 + \phi(\alpha - 1)} \quad [10.3.1]$$

### 10.3.2 Other Combustion Gases.

**10.3.2.1** When other combustion gases are measured, their release rate shall be calculated from the following equation:

$$\dot{m}_x = \frac{\sum (X_{xi} \dot{m}_{ei} \Delta t_i) \frac{\dot{m}_e}{M_a}}{\text{test period}} \quad [10.3.2.1]$$

**10.3.2.2** The release rate of other combustion gases shall be a function of the summation of the concentrations of that gas at each scan in the exhaust (the products of the mole fraction of the combustion gas, the overall mass flow rate for that scan, and the scan period), its molecular weight, and the total test period.

## 10.4 Symbols.

$C$	= calibration factor for orifice plate or bidirectional probe ( $\text{kg}^{1/2}$ , $\text{m}^{1/2}$ , or $\text{K}^{1/2}$ )
$E$	= net heat released per unit mass of oxygen consumed: 13.1 MJ/kg

$E_{CO}$	= net heat released per unit mass of oxygen consumed, for carbon monoxide: 17.6 MJ/kg
$Ht_{\text{comb}}$	= heat of combustion of the fuel used: 46.5 MJ/kg for propane
$I_o$	= light intensity for a beam of parallel light rays, measured in a smoke-free environment, with a detector having the same spectral sensitivity as the human eye and reaching the photodetector
$I$	= light intensity for a parallel light beam having traversed a certain length of smoky environment and reaching the photodetector
$k$	= extinction coefficient (L/m)
$L_p$	= light path length of beam through smoky environment, which is equal to the duct diameter (m)
$\dot{m}_e$	= mass flow rate in exhaust duct (kg/s)
$\dot{m}_{CO}$	= release rate of carbon monoxide (kg/s)
$\dot{m}_x$	= release rate of combustion product $x$ (kg/s)
$M_a$	= molecular weight of incoming and exhaust air: 29 kg/kmol
$M_{CO}$	= molecular weight of carbon monoxide: 28 kg/kmol
$M_{O_2}$	= molecular weight of oxygen: 32 kg/kmol
$M_x$	= molecular weight of specimen $X$
$OD$	= optical density per unit light path length (L/m)
$\Delta p$	= pressure drop across the orifice plate or bidirectional probe (Pa)
$\dot{q}$	= rate of heat release (kW)
$RSR$	= rate of smoke release ( $\text{m}^2/\text{s}$ )
$\Delta t$	= scan period (sec)
$T_e$	= gas temperature at the orifice plate or bidirectional probe (K)
test period	= duration of test (sec)
THR	= total heat released (MJ)
TSR	= total smoke released ( $\text{m}^2$ )
$\dot{V}_s$	= volumetric flow rate at location of smoke meter (value adjusted for smoke measurement calculations) ( $\text{m}^3/\text{s}$ )
$X_{CO}$	= measured mole fraction of CO in exhaust flow (nondimensional)
$X_{CO_2}$	= measured mole fraction of $\text{CO}_2$ in exhaust flow (nondimensional)
$X_{CO_2}^0$	= measured mole fraction of $\text{CO}_2$ in incoming air (nondimensional)
$X_{O_2}$	= measured mole fraction of $\text{O}_2$ in exhaust flow (nondimensional)
$X_{O_2}^0$	= measured mole fraction of $\text{O}_2$ in incoming air (nondimensional)
$X_x$	= measured mole fraction of combustion gas $x$ in exhaust flow (nondimensional)
$\alpha$	= combustion expansion factor (nondimensional) (Use a value of 1.105, unless the value for the test specimen, not the ignition gas, is known)
$\phi$	= oxygen depletion factor (nondimensional)
$\rho_o$	= density of air at 273.15 K: 1.293 ( $\text{kg}/\text{m}^3$ )

## Chapter 11 Documentation

**11.1 Report.** The report shall include the data and information specified in Sections 11.2 through 11.8.

**11.2 Materials.** Documentation of materials shall include all of the following information:

- (1) Name, thickness, density, and size of the test material, along with other identifying characteristics or labels
- (2) If the specimen is constructed at the test facility, a detailed specimen description, including information on wall covering (chemical composition, if known, and density), adhesive, backing, any coatings (if applicable, with information on rate of application), and any additional components
- (3) Mounting, installation (including attachment method), and conditioning of materials (including all relevant time periods involved)
- (4) Layout of specimens in test room (including appropriate drawings)
- (5) Relative humidity and temperature of the room and the test building prior to and during the test

**11.3 Burner Gas Flow.** The burner gas flow shall be the fuel gas flow to the ignition burner and its calculated rate of heat output.

**11.4 Time History of the Total Heat Flux to Floor.** The time history of the total heat flux to floor shall be the total incident heat flux at the center of the floor for the heat flux gauge as a function of time starting 3 minutes prior to the test.

**11.5 Time History of the Gas Temperature.** The time history of the gas temperature shall be the temperature of gases in the room, in the doorway, and in the exhaust duct for each thermocouple as a function of time starting 3 minutes prior to the test.

**11.6 Time History of the Rate of Heat Release of the Fire.**

**11.6.1** The rate of heat release shall be calculated from the measured oxygen, carbon monoxide, and carbon dioxide concentrations and the temperature and volumetric flow rate of the gas in the duct.

**11.6.2** The rate of heat release time history shall be reported, as well as the maximum and average values.

**11.6.3** The total heat released time history shall be reported, as well as the final value and the values of both the rate of heat release and the total heat released, every 1 minute.

**11.7 Time History of the Fire Growth.** The time history of the fire growth shall be a transcription of the visual, photographic, audio, and written records of the fire test.

**11.7.1** The records shall indicate all of the following:

- (1) Time of ignition of the wall finish
- (2) Approximate location of the flame front most distant from the ignition source at intervals not exceeding 15 seconds during the fire test
- (3) Time of flashover
- (4) Time at which flames extend outside the doorway

**11.7.2** In addition, the visual documentation specified in 7.1.4 shall be supplied.

**11.7.3** Drawings, photographs, and video recordings showing the extent of the damage to the materials after the test shall be supplied.

**11.8 Time History of Smoke Obscuration.** The smoke obscuration shall be described by means of the optical density, rate of smoke release, and total smoke released, measured with the instrumentation in the exhaust duct.

**11.8.1** The rate of smoke release and optical density time history shall be reported, as well as the maximum and average values.

**11.8.2** The total smoke released time history shall be reported, as well as the final value and the rate of smoke release and total smoke released values every 1 minute.

**11.9 Discussion of Performance.** A complete discussion of sample performances shall be conducted and shall include all of the following:

- (1) Flame spread to ceiling during 40 kW exposure
- (2) Presence of burning droplets on the floor that persist in burning 30 seconds or more
- (3) Visibility conditions in the fire test room
- (4) Other pertinent details with respect to fire growth

## Annex A Explanatory Material

*Annex A is not a part of the requirements of this NFPA document but is included for informational purposes only. This annex contains explanatory material, numbered to correspond with the applicable text paragraphs.*

**A.1.1.2** Demountable, relocatable, full-height partitions include demountable, relocatable, full-height partitions that fill the space between the finished floor and the finished ceiling.

**A.1.1.4** One important difference between the ignition source in this test method and that used in NFPA 286 is that the flame in the NFPA 265 ignition source does not reach the ceiling. Thus, the NFPA 265 ignition source should not be used for testing materials that are to be installed on the ceiling.

**A.1.1.5** Freestanding panel furniture systems include all freestanding panels that provide visual separation, acoustical separation, or both and that are intended to be used to divide space or to support components to form complete work stations.

**A.1.4** Earlier editions of this test method contained two test protocols for testing textile wall coverings: Method A (a screening test, now shown as an option in Annex C) and Method B (fully lined walls). In the present edition, Method B is the only mandatory test protocol.

**A.3.3.2 Expanded Vinyl Wall Covering.** The expanded base coat layer is a homogeneous vinyl layer that contains a blowing agent. During processing, the blowing agent decomposes, causing this layer to expand by forming closed cells. The total thickness of the wall covering is approximately 1.4 mm to 1.8 mm (0.055 in. to 0.070 in.).

**A.3.3.3 Textile.** The concept of a textile wall covering is intended to include carpets or other types of textile floor coverings applied to panels or walls.

**A.4.1.5.2** This net heat of combustion corresponds to a propane gas flow rate of approximately 26.9 L/min for 40 kW and 100.8 L/min at 150 kW, for propane with a net heat of combustion of 46.5 MJ/kg, under standard conditions of 101 kPa (14.7 psi) absolute pressure and 20°C (68°F) temperature.

**A.4.1.6** Two typical arrangements for a gas supply are illustrated in Figure A.4.1.6.

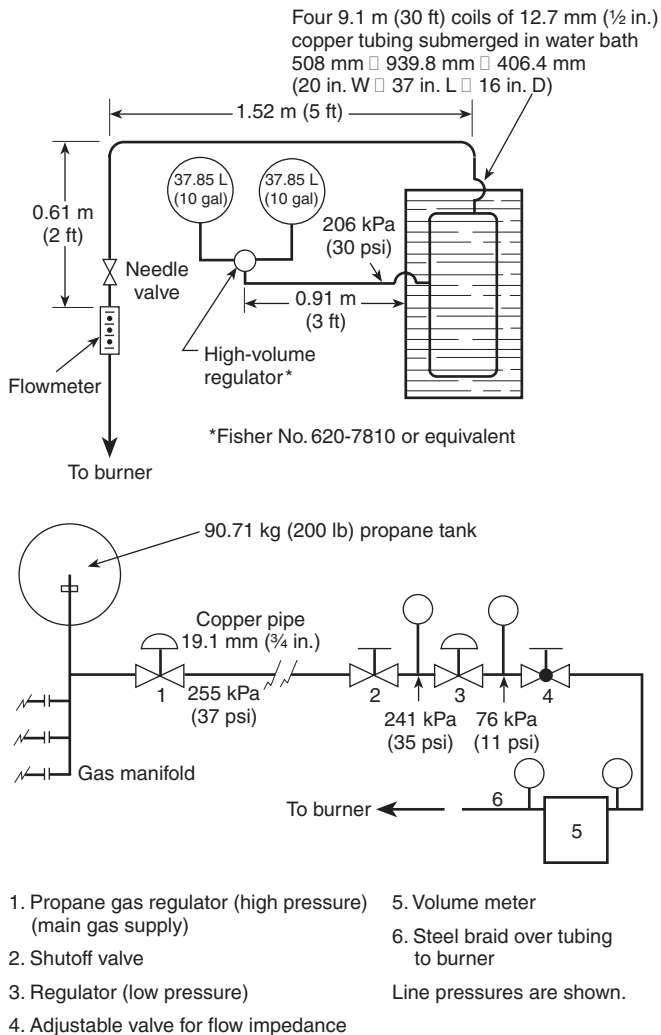


FIGURE A.4.1.6 Two Typical Gas Flow Regulation Systems.

**A.4.2.1** A study by R. D. Peacock and J. N. Breese (NBSIR 82-2516, *Computer Fire Modeling for the Prediction of Flashover*) examined the effect of geometric room changes on the minimum energy required to cause flashover. It showed that increased room height beyond 2.4 m (approximately 8 ft) changed the minimum needed flashover energy (expressed as a percentage) as follows: percent  $100 + 5.3 \Delta H$ .

Here  $\Delta H$  is the increase in room height (expressed in meters). Thus, for instance, if the height was changed by 0.2 m (7.8 in.), the energy scaling would be changed by 1.06 percent. This is completely insignificant, since few fire measurements can be made to a repeatability or reproducibility of better than 10 percent. The effects of changing floor areas were similarly modest. Room dimensions having a tolerance of  $\pm 0.1$  m ( $\pm 3.9$  in.) should be entirely adequate for reproducibility.

**A.4.2.4** To facilitate the mounting of the instruments and the ignition source, it is convenient to place the test room so that the floor can be reached from underneath.

**A.4.2.6** If self-supporting panels are tested, a separate exterior frame or block compartment is not required.

**A.5.1.3** It has been shown that the specific adhesive used to secure a specimen can significantly affect the fire performance of a wall covering system, and therefore the adhesive utilized should be the same as that intended for actual use.

**A.5.1.7** References to wood are not intended to apply to wood to which a fire-retardant treatment has been applied.

**A.5.3.1** For products where vaporization of solvents occurs (such as those using adhesives) or products containing wood, a conditioning time of 4 weeks is not uncommon.

**A.7.1.1** It is preferable to mount the total heat flux gauge at a height between 5 mm and 30 mm (0.2 in. and 1.2 in.) above the floor surface.

**A.7.1.1.1** Maintenance of the heat flux gauge will normally require a flow rate of at least 0.38 L/min (0.1 gpm).

**A.7.1.2.2** Metal-clad thermocouples with ceramic powder filling have been found satisfactory for this purpose, but silicone-impregnated, glass-insulated thermocouples are likely to break at temperatures above 815°C (1500°F).

**A.7.1.4** A window that is cut 0.61 m (2 ft) above the floor in the front wall facing the gas burner and fitted with heat-resistant, impact-resistant glazing provides useful photographic access. Any floodlights used should not raise the ambient temperature in the room above what is specified in Chapter 6.

**A.7.3.2** A bidirectional probe is preferable to a pitot-static tube for measuring velocity in the exhaust duct, in order to avoid problems of clogging with soot. Capacitance transducers have been found to be most stable for this application.

**A.7.3.4.1** Stainless steel sampling lines have been shown to be satisfactory. Alternative designs of the sampling line should give equivalent results.

The recommended approach to a cooling column (to remove water from the combustion gases) is to use a refrigerated column and separation chamber with a drain plug from which the collected water is removed from time to time. Alternative devices shown to give equivalent results are also acceptable.

**A.7.3.4.4** Combustion gas concentration measurements require the use of appropriate time shifts in order to account for the time required for gas analyzer response and for combustion gas transit time within the sampling system.

**A.7.3.5** A method for determining suitability of oxygen analyzers for making heat release measurements is as follows:

- (1) *General.* The type of oxygen analyzer best suited for fire gas analysis is of the paramagnetic type. Electrochemical analyzers or analyzers using zirconia sensors have generally been found not to have adequate sensitivity or suitability for this type of work. The normal range of the instrument to be used is 0 vol to 25 vol percent oxygen. Normally, the linearity of paramagnetic analyzers is better than what can be checked by a user laboratory; therefore, verifying their linearity is not necessary. It is important, however, to confirm the noise and short-term drift of the instrument used.
- (2) *Procedure.* Check the analyzer suitability using the following steps:
  - (a) Connect two different gas bottles that are approximately 2 percentage points apart (e.g., 15 vol percent and 17 vol percent) to a selector valve at the inlet of the analyzer.



- (b) Connect the electrical power and let the analyzer warm up for 24 hours, with one of the test gases from A.7.3.5(2)(a) flowing through it.
  - (c) Connect a data acquisition system to the output of the analyzer. Quickly switch from the first gas bottle to the second bottle and immediately start collecting data, taking one data point per second. Collect data for 20 minutes.
  - (d) Determine the drift by using a least-squares analysis fitting procedure to pass a straight line through the last 19 minutes of data. Extrapolate the line back through the first minute of data. The difference between the readings at 0 minutes and at 20 minutes on the fitted straight line represents the short-term drift. Record the drift in units of parts per million of oxygen.
  - (e) The noise is represented by the root-mean-square deviation around the fitted straight line. Calculate that root-mean-square value and record it in units of parts per million of oxygen.
- (3) *Analyzer.* The analyzer is suitable for use in heat release measurements if the sum of the drift plus the noise terms is 50 ppm oxygen (note that both terms need to be expressed as positive numbers).
- (4) *Additional precautions.* A paramagnetic oxygen analyzer is directly sensitive to barometric pressure changes at its outlet port and to flow rate fluctuations in the sample supply stream. It is essential that the flow rate be regulated. Use either a flow rate regulator of the mechanical diaphragm type or an electronic mass flow rate controller. To protect against errors due to changes in barometric pressure, one of the following procedures should be used:
- (a) Control the back pressure to the analyzer with a back pressure regulator of the absolute-pressure type.
  - (b) Electrically measure the actual pressure at the detector element and provide a signal correction for the analyzer output.

See ASTM E1354, *Standard Method for Heat and Visible Smoke Release Rates for Materials and Products Using an Oxygen Consumption Calorimeter*.

**A.7.3.8.2.1** The following information is being provided for informational purposes only and has not been independently verified, certified, or endorsed by NFPA or any of its technical committees. The system described as follows is an example of a white light measuring system that has been found to be satisfactory:

- (1) *Lenses.* Plano convex, diameter 40 mm, focal length 50 mm
- (2) *Lamp.* Osram Halo Stars, 64410, 6 V, 10 W, or equivalent
- (3) *Photocell.* United Detector Technology, PIN 10 AP, or equivalent
- (4) *Power Supply.* Gresham Lion Ltd, Model G 012, or equivalent

**A.7.3.8.3** It has been shown that white light and laser systems will give similar results. See the following publications:

- (1) "Comparison of Smoke Release Rate from Building Products," by B. Ostman.
- (2) "Rate of Heat Release Testing for Vinyl Wire and Cable Materials with Reduced Flammability and Smoke: Small Scale and Full Scale Tests," by A. W. Coaker, M. M. Hirschler, and C. L. Shoemaker.

The following information is being provided for informational purposes only and has not been independently verified, certified, or endorsed by NFPA or any of its technical committees. The system described as follows is an example of a laser measuring system that has been found to be satisfactory:

- (1) *Helium-Neon Laser.* Aerotech OEM-05P, or equivalent
- (2) *Laser Power Supply.* Aerotech LSS-05, or equivalent
- (3) *Photocells.* Hamamatsu S1336-44BK, or equivalent

**A.8.2** This calibration is likely to be within 20 percent of the correct value.

**A.8.4** ASTM E800, *Standard Guide for Measurement of Gases Present or Generated During Fires*, offers guidance on calibrating gas analyzers.

**A.10.1** Additional information is contained in an article in *Fire Technology*, "Measuring Rate of Heat Release by Oxygen Consumption," by M. Janssens, pp. 234-249.

**A.10.1.2** This velocity profile is obtained by measuring velocity at a sufficient number of representative points over the diameter or cross-section of the duct prior to any fire tests. Detailed procedures for obtaining this profile are described in *The Measurement of Air Flow* by E. Ower and R. Pankhurst. Usually, conditions in full-scale fire tests are such that the flow in the duct is turbulent, resulting in a shape factor  $k_c$  (equal to the ratio of the average velocity to the velocity along the centerline) close to 1.

Due to considerable soot production in many fires, pitot-static tubes are generally not useful because of the potential for clogging of the holes. To deal with this problem, the bidirectional probe described in 7.3.2 was designed by B. J. McCaffrey and G. Heskestad ("A Robust Bidirectional Low-Velocity Probe for Flame and Fire Application"). This bidirectional probe involves measuring the differential pressure across the probe and the centerline velocity.

**A.10.1.4** Water vapor should be removed before the sample air is introduced into the oxygen analyzer. Use a water trap and desiccant to remove the water.

**A.10.1.6** Water vapor must be removed before the sample air is introduced into the oxygen analyzer. Use a water trap and desiccant to remove the water. The concentration range of carbon monoxide in most fires is a small fraction of the concentration range of carbon dioxide. Hence, the correction for the heat release rate is generally less than 5 percent. Therefore, carbon monoxide measurements can be ignored.

## Annex B Acceptance Criteria

*This annex is not a part of the requirements of this NFPA document but is included for informational purposes only.*

**B.1** The acceptance criteria in Section B.2 have been used by several of the model code organizations, such as the International Conference of Building Officials (ICBO), the Building Officials and Code Administrators International (BOCA), and the Southern Building Code Congress International (SBCCI), and are provided as a guide for the user of the test method described in this standard. Similar criteria have also been in use in the *International Building Code (IBC)*, issued by the International Code Council (ICC), and in NFPA 101 and NFPA 5000. The acceptance criteria in Section B.2 are used in the *International Fire Code*, issued by the ICC, primarily for existing textile and expanded vinyl wall coverings. The acceptance criteria in Section B.3, or equivalent ones, have been used by the same codes and continue to be used.

**B.2** Textile wall coverings should be considered as demonstrating satisfactory performance if, during the Method A test



protocol (as shown in Annex C), both of the following conditions are met:

- (1) Flame should not spread to the ceiling during the 40 kW exposure.
- (2) During the 150 kW exposure, the following criteria should be met:
  - (a) Flame should not spread to the outer extremity of the sample on the 2.44 m × 3.66 m (8 ft × 12 ft) wall.
  - (b) The specimen should not burn to the outer extremity of the 0.6 m (2 ft) wide samples mounted vertically in the corner of the room.
  - (c) Burning droplets that are judged to be capable of igniting the textile wall covering or that persist in burning for 30 seconds or more should not be formed and dropped to the floor.
  - (d) Flashover should not occur.
  - (e) The maximum instantaneous net peak rate of heat release should not exceed 300 kW. The maximum instantaneous net peak rate of heat release is derived by subtracting the burner output from the measured maximum rate of heat release.

**B.3** Textile wall coverings or expanded vinyl wall coverings should be considered as demonstrating satisfactory performance if, during the Method B test protocol, the following conditions are met:

- (1) Flame should not spread to the ceiling during the 40 kW exposure.
- (2) Flame should not spread to the outer extremities of the samples on the 2.44 m × 3.66 m (8 ft × 12 ft) walls.
- (3) Flashover should not occur.
- (4) The total smoke released throughout the test should not exceed 1,000 m<sup>2</sup> (10,760 ft<sup>2</sup>).

## Annex C Method A Test Protocol

*This annex is not a part of the requirements of this NFPA document but is included for informational purposes only.*

**C.1** Method A test protocol is a screening test method that is useful for testing small amounts of material. The only difference in testing procedure between Test Protocol A and Test Protocol B is the specimen, which does not cover three walls of the test room but simply covers a section of the left sidewall and the rear wall as indicated in Section C.2.

### C.2 Specimen Mounting and Installation.

**C.2.1** The specimen assembly should be installed on the left sidewall and the rear wall (as viewed from the room door) and as illustrated in Figure C.2.1.

**C.2.2** Vertically installed portions of specimen assemblies should extend 0.6 m (2 ft) from the ceiling and should be installed for the full 2.44 m (8 ft) width of the rear wall and the full 3.66 m (12 ft) length of the left sidewall.

**C.3** When testing using Method B test protocol, the test report should note whether burning extended to the outer extremities of the 0.6 m (2 ft) wide samples mounted vertically in the corner of the room. If burning extended to the outer extremities of the sample, the test report should also note the time at which such burning occurred.

## Annex D Informational References

**D.1 Referenced Publications.** The documents or portions thereof listed in this annex are referenced within the informa-

tional sections of this standard and are not part of the requirements of this document unless also listed in Chapter 2 for other reasons.

**D.1.1 NFPA Publications.** National Fire Protection Association, 1 Batterymarch Park, Quincy, MA 02169-7471.

NFPA 101<sup>®</sup>, *Life Safety Code*<sup>®</sup>, 2015 edition.

NFPA 286, *Standard Methods of Fire Tests for Evaluating Contribution of Wall and Ceiling Interior Finish to Room Fire Growth*, 2015 edition.

NFPA 5000<sup>®</sup>, *Building Construction and Safety Code*<sup>®</sup>, 2015 edition.

### D.1.2 Other Publications.

**D.1.2.1 ASTM Publications.** ASTM International, 100 Barr Harbor Drive, P.O. Box C700, West Conshohocken, PA 19428-2959.

ASTM E800, *Standard Guide for Measurement of Gases Present or Generated During Fires*, 2007.

ASTM E1354, *Standard Test Method for Heat and Visible Smoke Release Rates for Materials and Products Using an Oxygen Consumption Calorimeter*, 2013.

**D.1.2.2 ICC Publications.** International Code Council, 5203 Leesburg Pike, Suite 600, Falls Church, VA 22041.

*International Building Code (IBC)*, 2015.

*International Fire Code (IFC)*, 2015.

**D.1.2.3 NBSIR Publications.** National Institute of Standards and Technology, U.S. Department of Commerce, Fire Research Information Service, Building and Fire Research Laboratory, 100 Bureau Drive, Stop 8600, Gaithersburg, MD 20899-8600.

NBSIR 82-2516, *Computer Fire Modeling for the Prediction of Flashover*, 1982.

**D.1.2.4 Additional Publications.** Coaker, A. W., M. M. Hirschler, and C. L. Shoemaker. "Rate of Heat Release Testing for Vinyl Wire and Cable Materials with Reduced Flammability and Smoke: Small Scale and Full Scale Tests," in Proceedings 15th Int. Conf. on Fire Safety, Product Safety Corp., San Francisco, CA, C. J. Hilado, ed., January 8–12, pp. 220–256, 1990.

Janssens, M. L. "Measuring Rate of Heat Release by Oxygen Consumption," *Fire Technology*, pp. 234–249, August 1991.

McCaffrey, B. J., and G. Heskestad. "A Robust Bidirectional Low-Velocity Probe for Flame and Fire Application," *Combustion and Flame*, Vol. 26, No. 1, pp. 125–127, February 1976.

Ostman, B. "Comparison of Smoke Release Rate from Building Products," International Conference FIRE. Control the Heat. . . Reduce the Hazard, London, UK, October 24–25, 1988, Fire Research Station, UK, paper 8.

Ower, E., and R. Pankhurst. *The Measurement of Air Flow*, Pergamon Press, 5th ed., pp. 112–147, 1977.

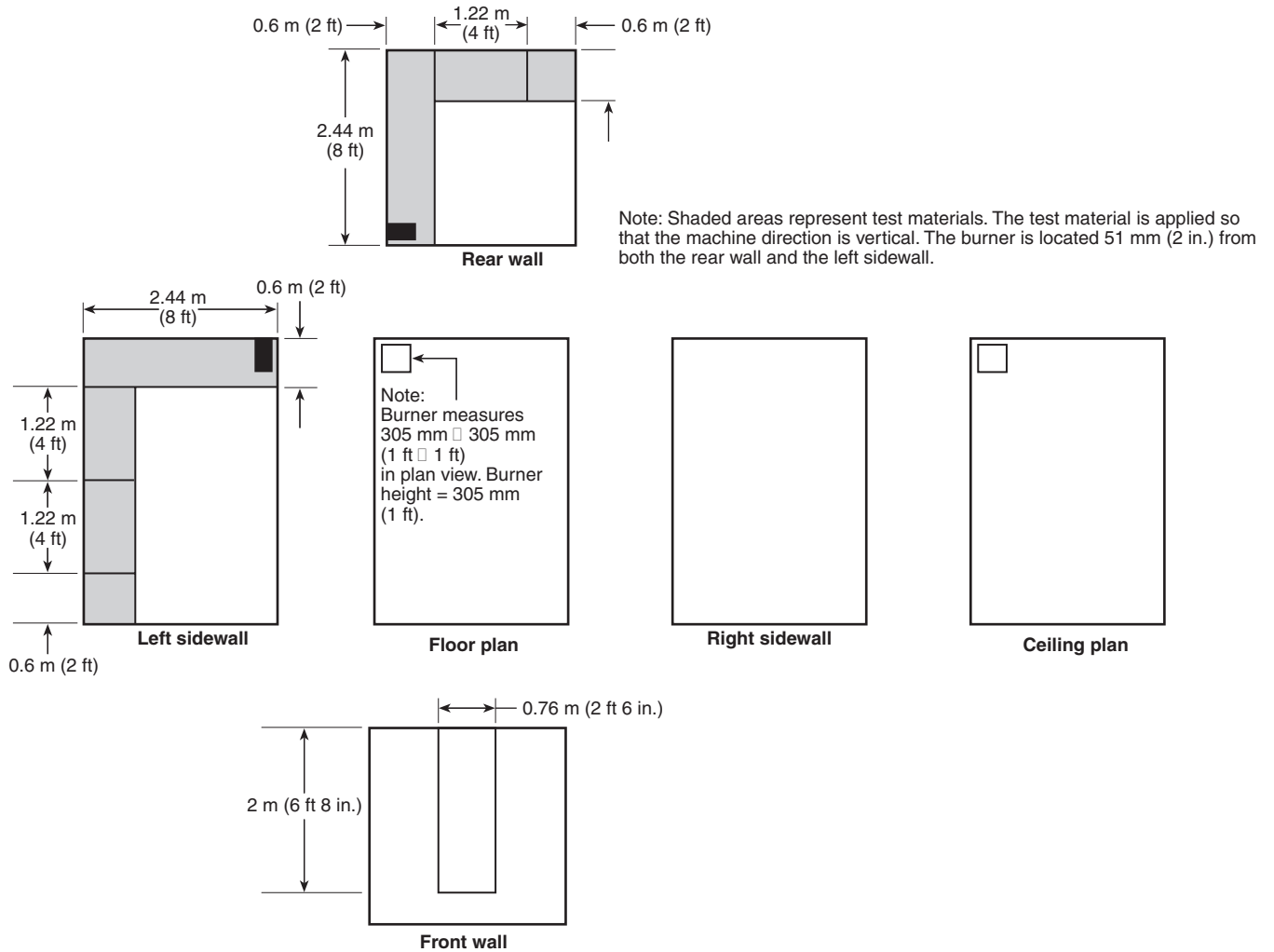
**D.2 Informational References.** The following documents or portions thereof are listed here as informational resources only. They are not a part of the requirements of this document.

Fisher, F. L., B. MacCracken, and R. B. Williamson. "Room Fire Tests of Textile Wall Coverings," ES-7853, Service to Industry Report No. 85-4, Fire Research Laboratory, University of California, Berkeley, CA, April 1986.

Gardon, R. "An Instrument for the Direct Measurement of Intense Thermal Radiation," Review of Scientific Instruments, Vol. 24, No. 5, pp. 366–370, May 1953.

**D.3 References for Extracts in Informational Sections. (Reserved)**





**FIGURE C.2.1 Specimen Mounting for Method A Test Protocol.**