

90A

**INSTALLATION OF
AIR CONDITIONING
AND VENTILATING
SYSTEMS
1972**



\$1.00

Copyright © 1972

**NATIONAL FIRE PROTECTION ASSOCIATION
International**

60 Batterymarch Street, Boston, Mass. 02110

Official NFPA Definitions

Adopted Jan. 23, 1964; Revised Dec. 9, 1969. Where variances to these definitions are found, efforts to eliminate such conflicts are in process.

SHALL is intended to indicate requirements.

SHOULD is intended to indicate recommendations or that which is advised but not required.

APPROVED means acceptable to the authority having jurisdiction. The National Fire Protection Association does not approve, inspect or certify any installations, procedures, equipment or materials nor does it approve or evaluate testing laboratories. In determining the acceptability of installations or procedures, equipment or materials, the authority having jurisdiction may base acceptance on compliance with NFPA or other appropriate standards. In the absence of such standards, said authority may require evidence of proper installation, procedure or use. The authority having jurisdiction may also refer to the listings or labeling practices of nationally recognized testing laboratories,* i.e., laboratories qualified and equipped to conduct the necessary tests, in a position to determine compliance with appropriate standards for the current production of listed items, and the satisfactory performance of such equipment or materials in actual usage.

*Among the laboratories nationally recognized by the authorities having jurisdiction in the United States and Canada are the Underwriters' Laboratories, Inc., the Factory Mutual Research Corp., the American Gas Association Laboratories, the Underwriters' Laboratories of Canada, the Canadian Standards Association Testing Laboratories, and the Canadian Gas Association Approvals Division.

LISTED: Equipment or materials included in a list published by a nationally recognized testing laboratory that maintains periodic inspection of production of listed equipment or materials, and whose listing states either that the equipment or material meets nationally recognized standards or has been tested and found suitable for use in a specified manner.

LABELED: Equipment or materials to which has been attached a label, symbol or other identifying mark of a nationally recognized testing laboratory that maintains periodic inspection of production of labeled equipment or materials, and by whose labeling is indicated compliance with nationally recognized standards or tests to determine suitable usage in a specified manner.

AUTHORITY HAVING JURISDICTION: The organization, office or individual responsible for "approving" equipment, an installation, or a procedure.

Statement on NFPA Procedures

This material has been developed in the interest of safety to life and property under the published procedures of the National Fire Protection Association. These procedures are designed to assure the appointment of technically competent Committees having balanced representation from those vitally interested and active in the areas with which the Committees are concerned. These procedures provide that all Committee recommendations shall be published prior to action on them by the Association itself and that following this publication these recommendations shall be presented for adoption to the Annual Meeting of the Association where anyone in attendance, member or not, may present his views. While these procedures assure the highest degree of care, neither the National Fire Protection Association, its members, nor those participating in its activities accepts any liability resulting from compliance or non-compliance with the provisions given herein, for any restrictions imposed on materials or processes, or for the completeness of the text.

Copyright and Republishing Rights

This publication is copyrighted © by the National Fire Protection Association. Permission is granted to republish in full the material herein in laws, ordinances, regulations, administrative orders or similar documents issued by public authorities. All others desiring permission to reproduce this material in whole or in part shall consult the National Fire Protection Association.

Standard for the Installation of Air Conditioning and Ventilating Systems

NFPA No. 90A — 1972

This 1972 Edition of the Standard supersedes the Edition of 1971 and incorporates changes prepared by the Committee on Air Conditioning and adopted by the Annual Meeting on May 17, 1972.

Committee on Air Conditioning

Martin M. Brown (SFPE), Chairman,

Director of Casualty & Fire Protection Engineering, American International Group Inc.
102 Maiden Lane, New York, N. Y. 10005

R. H. Zelinske, Secretary,

Underwriters' Laboratories, Inc., 333 Pfingsten Rd., Northbrook, Ill. 60062

Forrest Andrews, General Services Administration

Walter W. Baese, Xerox Corp.

J. M. Barnhart, National Insulation Manufacturers Assn.

Irwin A. Benjamin, National Bureau of Standards

R. B. Boyd, Factory Mutual Research Corp.

Dee Cramer, Sheet Metal and Air-Conditioning Contractors' National Assn., Inc.

D. P. Dann, American Institute of Architects

Deputy Chief Joseph Dolan, Fire Marshals Assn. of North America

Richard G. Gewain, American Iron and Steel Institute

Carl T. Herdman, Acoustical and Insulating Materials Assn.

John Holmes, National Warm Air Heating & Air Conditioning Assn.

Wm. Y. Humphreys, National Electrical Manufacturers Assn.

Robert L. Jones, Air-Conditioning and Refrigeration Institute

E. E. Miller, Factory Insurance Assn.

William D. Moody, Airconditioning and Refrigeration Contractors of America

Robert K. Raisler, National Automatic Sprinkler and Fire Control Assn.

Walter L. Sands, Western Actuarial Bureau

William A. Schmidt, Federal Fire Council

Stanley Z. Seago, State of North Carolina, Department of Administration

Bennett Seleko, Building Codes Bureau, New York, N. Y.

Charles J. Shukes, Insurance Services Office of Illinois

Norman Singer, Jaros, Baum & Bolles

Nicholas L. Talbot, Improved Risk Mutuals

George Tamura, American Society of Heating, Refrigerating and Air Conditioning Engineers

Gerald M. Watson, American Insurance Assn.

Alternates.

J. S. Barritt, Factory Insurance Assn., (Alternate to E. E. Miller)

Forrest G. Hammaker, American Gas Assn. (Alternate representative: American Gas Association)

Frederick J. Reed, Air-Conditioning and Refrigeration Institute (Alternate to Robert L. Jones)

Robert G. Sandvik, Sheet Metal & Air Conditioning Contractors' National Assn., Inc. (Alternate to Dee Cramer)

Raymond C. Selfert, American Insurance Assn. (Alternate to Gerald M. Watson)

S. B. Semple, American Society of Heating, Refrigerating and Air Conditioning Engineers, (Alternate to George Tamura)

Howard H. Summers, Jr., Fire Marshals Assn. of North America (Alternate to Deputy Chief Joseph Dolan)

Walter G. Wells, American Iron & Steel Institute (Alternate to Richard G. Gewain)

Nonvoting Member.

Nat L. Evre, Federal Housing Administration

Scope: The construction, installation, operation and maintenance of systems for air conditioning, warm air heating and ventilating, including filters, ducts and related equipment, to protect life and property from fire, smoke and gases resulting from fire or from conditions having manifestations similar to fire.

Changes in this 1972 Edition from the 1971 Edition include: amendments to 303(b), 303(b)1, 303(b)5, 313, 315(c), 315(d), 316(d), 901, 903(c), 903(e), 904(c), 905(g), 1005 (old 1004), and a revision in Fig. 4.

Origin and Development of No. 90A

This standard dates from 1899, when committee attention was first given to blower and exhaust systems. Prior to 1936, the subject of air conditioning was covered in NFPA Standard on Blower Systems, No. 91. In 1937 it was decided to prepare a separate Standard on Air Conditioning, Warm Air Heating, Air Cooling and Ventilating Systems. This standard was initially adopted in 1937 with subsequent amendments in 1938, 1939, 1940, 1942, 1950, 1952, 1955, 1957, 1958, 1960, 1961, 1962, 1963, 1964, 1965, 1966, 1967, 1968, 1969, 1971, and 1972.

Prior to 1955, the subject of the present standard was Part I of the Standard on Air Conditioning, No. 90. Since 1955 the two parts of No. 90 have been published separately as No. 90A and 90B. For Standard for the Installation of Residence Type Warm Air Heating and Air Conditioning Systems, see No. 90B.

CONTENTS

Introduction	90A- 3
1. Purpose and Scope	90A- 5
2. Definitions	90A- 5
3. Construction of Ducts	90A- 7
4. Air Intakes and Outlets	90A-15
5. Air Filters	90A-15
6. Fans	90A-16
7. Electric Wiring and Equipment	90A-17
8. Air Cooling and Heating Equipment	90A-18
9. Automatic Fire Doors and Fire Dampers.	90A-19
10. Controls	90A-24
Appendix A — Maintenance	90A-26
Appendix B — Smoke Removal	90A-27

Standard for the Installation of Air Conditioning and Ventilating Systems

NFPA No. 90A — 1972

INTRODUCTION

General. Due to the ability of a duct system to convey smoke, hot gases and fire itself from area to area, and to accelerate a fire occurring within an air duct system, it is believed that a degree of fire protection commensurate with the characteristics of a duct system is essential to safety to life and the protection of property.

Materials. In the 1930's, during the early history of air conditioning systems, the combustion of materials used in the system itself contributed to substantial fire and smoke losses. It became apparent that materials possessing combustible and smoke-producing characteristics so slight as to be considered of little importance in an open room, could create a hazard under the draft conditions within a duct system. Therefore, greater attention was then given to prescribing the properties of materials used in ducts, interior linings and external coverings.

These properties are now subject to better identification, with general terms including "noncombustible" replaced in sections of this standard with specified flamespread and smoke-developed ratings based upon standard test procedures that compare fire hazard characteristics of materials.

Smoke. The movement of smoke through ducts creates a fire effect unique to buildings equipped with air duct systems. The smoke carried by relatively cool air precedes hot air that can actuate heat responsive devices, yet the cooler smoke can be distributed in sufficient quantity to cause injury or death, damage to property, or a tendency toward panic. Smoke-detecting devices were originally used but sparingly, when the state of the art of smoke detection was young. However, devices and systems for smoke detection have been improved and have found wide acceptance in protecting against these hazards.

Building Construction. The necessary installation of ducts and other elements of duct systems usually involves the piercing of walls, floors and ceilings. Where such walls, floors and ceilings have importance as fire barriers, the integrity of their fire resistance must be preserved.

Fire Prevention. The highest level of fire prevention is essential as a built-in aspect of an air conditioning installation because of the ability of a duct system to convey fire, hot gases and smoke quickly from area to area, and to accelerate a fire. Special attention is needed to the types of air filters and electrical equipment, and provision for their maintenance.

Maintenance Responsibility. Beyond the scope of this installation standard lies the responsibility for the maintenance of equipment including air filters, motors, fire dampers and controls, and cleanliness of ducts and plenums. There should be developed a greater awareness by owners, of the potential hazards of duct systems which do not receive periodic attention by qualified personnel.

Standard for the Installation of Air Conditioning and Ventilating Systems

PURPOSE, SCOPE AND DEFINITIONS

1. Purpose and Scope

101. Purpose. It is the intent of this standard to provide general requirements to:

(a) Restrict the spread of smoke through duct systems in a building or into a building from the outside.

(b) Restrict the spread of heat and fire through duct systems from one fire area to another or into a building from the outside.

(c) Maintain the fire resistive integrity of building elements such as floors, walls and columns affected by duct system installation.

(d) Minimize ignition sources and combustibility of the elements of the duct system.

(e) Permit the air duct systems in a building to be used for the additional purpose of emergency smoke control.

102. Scope. This standard applies to duct systems used for heating and ventilating, including warm air heating systems, plain ventilating systems, combination heating and ventilating systems, air cooling systems, air conditioning systems, and exhaust systems.

NOTE: For residence type systems, see NFPA 90B; for blower and exhaust systems for dust, stock and vapor removal or conveying, see NFPA 91; for systems in hospitals, in addition to this standard, see provisions for specific locations as specified in the Standard for Use of Inhalation Anesthetics, NFPA 56A; for ventilation of restaurant cooking equipment, see NFPA 96; for special protection of air systems in electronic computer/data processing rooms, see NFPA 75; for ventilation of transformer vaults, see Section 450 of NFPA 70; for systems in mobile homes, see NFPA 501B.

103. This standard is intended to prescribe reasonable provisions based on minimum requirements for safety to life and property from fire.

2. Definitions

(a) **AIR FILTERS.** A Class 1 air filter is one which, when clean, does not contribute fuel when attacked by flame and emits only negligible amounts of smoke when tested by the method of Underwriters' Laboratories, Inc., Standard 900, September, 1965.

A Class 2 air filter is one which, when clean, burns moderately when attacked by flame or emits moderate amounts of smoke, or both when tested by the method of Underwriters' Laboratories, Inc., Standard 900, September, 1965.

(b) **BLOWER.** A fan used to force air under pressure into an affected area.

(c) **DUCT COVERING.** The outside covering of a duct, fan casing, duct plenum. Includes materials such as adhesive, insulation, banding, coating(s), film, and jacket.

(d) **DUCT LINING.** The inside lining of a duct, fan casing, duct plenum. Includes materials such as adhesive, insulation, coating, and film.

(e) **DUCT SYSTEM.** A continuous passageway for the transmission of air which, in addition to ducts, may include duct fittings, dampers, plenums, fans and accessory air handling equipment.

(f) **EXHAUSTER.** A fan used to withdraw air from an affected area under suction.

(g) **FAN.** An assembly comprising blades or runners and housings or casings, and being either a blower or exhaustor.

(h) **FIRE DAMPER.** A damper arranged to interrupt air flow automatically through part of an air duct system so as to restrict the passage of heat. A fire damper may also be used as a smoke damper if location lends itself to the dual purpose. (See 2(l).)

(i) **FIRE WALL.** A wall having adequate fire resistance and structural stability under fire conditions to accomplish the purpose of completely subdividing a building or completely separating adjoining buildings to restrict the spread of fire.

(j) **FLAME SPREAD RATING.** The flame spread rating of materials as determined by the Method of Test of Surface Burning Characteristics of Building Materials, NFPA No. 255, ASTM E84, Underwriters' Laboratories, Inc., Standard. Such materials are listed in the Underwriters' Laboratories, Inc., Building Materials List under the heading "Hazard Classification (Fire)."

(k) **PLENUM.** An air compartment or chamber to which one or more ducts are connected and which forms part of an air distribution system.

(l) **SMOKE DAMPER.** A damper arranged to interrupt air flow automatically through a part of an air duct system, so as to restrict passage of smoke. A smoke damper may be a standard louvered damper serving other control functions if location lends

itself to the dual purpose. A smoke damper does not need to meet all the requirements of a fire damper.

(m) **SMOKE DEVELOPED RATING.** The smoke developed rating of materials as determined by the Method of Test of Surface Burning Characteristics of Building Materials, NFPA No. 255, ASTM E84, Underwriters' Laboratories, Inc., Standard. Such materials are listed in Underwriters' Laboratories, Inc. Building Materials List under the heading "Hazard Classification (Fire)".

SYSTEM COMPONENTS

3. Construction of Ducts

301. Ducts shall comply with 301(a) or 301(b). See also 317(b).

(a) Ducts shall be constructed of iron, steel, aluminum or other approved metal or materials such as clay or asbestos cement, except as provided in 301(b).

(b) Ducts need not conform to the provisions of 301(a) provided they are not used for vertical risers in air duct systems serving more than two stories and comply with the following:

1. They shall be constructed of Class 1 duct materials as tested in accordance with paragraphs 10 to 131 of Underwriters' Laboratories, Inc., Standard for Air Ducts, UL 181, April 1970.

2. Such ducts shall be installed in accordance with the conditions of their approval.

3. They shall not be used in air duct systems which operate with an air temperature higher than 250° F entering the ducts.

302. Ducts may be of independent construction or a part of the building structure, provided they are in accordance with the requirements of this standard. Where a duct passes through floors of a building, it shall also comply with 315.

303. (a) Flexible connectors (duct) for use between ducts and air outlets or air outlet units, and which do not pass through floors of buildings, need not conform to the requirements for ducts if they conform to the following provisions:

1. Connectors not exceeding 8 in. in diameter shall conform to the requirements for Class 2 connectors when tested in accordance

with paragraphs 10 to 131 of Underwriters' Laboratories, Inc., Standard for Air Ducts, UL 181, April 1970.

2. Connectors exceeding 8 in. in diameter shall conform to the requirements for Class 1 connectors when tested in accordance with paragraphs 10 to 131 of Underwriters' Laboratories, Inc., Standard for Air Ducts, UL 181, April 1970.

3. They shall not exceed 14 ft. in length.

4. They shall not pass through any fire wall or partition which serves to restrict the spread of fire and is required to have a standard fire resistance rating of not less than two hours.

5. Connectors used in concealed spaces consisting in part of combustible materials shall also pass the 15 minute flame penetration test for Class 2 air ducts as described in paragraphs 23 to 34 of Underwriters' Laboratories, Inc., Standard for Air Ducts, UL 181, April 1970.

(b) Flexible connectors (duct) for use between ducts and air outlet units which pass through one floor only shall conform for their full length to the following provisions:

1. They shall be of material having a melting point of not less than 1700° F, classed as noncombustible as defined in test procedure E136 of the American Society for Testing and Materials, and conform with requirements for Class 1 Air Duct Materials of Underwriters' Laboratories, Inc., Standard for Air Ducts, UL 181, April 1970.

2. They shall not exceed 20 square inches in cross-sectional area.

3. They shall not exceed 14 feet in length.

4. They shall not pass through any fire wall or partition which serves to restrict the spread of fire and is required to have a standard fire resistance rating of not less than two hours.

5. They shall be firestopped in accordance with 313.

304. Vibration isolation connectors in duct systems shall be made of woven asbestos or approved flameproofed fabric or shall consist of sleeve joints with packing of rope asbestos or other ap-

proved noncombustible material. Vibration isolation connectors of fabric shall not exceed 10 inches in length.

305. (a) Duct coverings and linings (see Section 2. Definitions.) shall have a flame-spread rating not over 25 without evidence of continued progressive combustion and with a smoke developed rating not higher than 50. If the coverings and linings are to be applied with adhesives, they shall be tested as applied with such adhesives, or the adhesives used shall have a flame-spread rating not over 25 and a smoke developed rating not higher than 50.

Exception: Coverings need not meet these requirements where they are entirely located outside of a building and do not penetrate a wall or roof, and do not create an exposure hazard.

(b) Evidence shall also be offered that the duct coverings and linings will not flame, glow, smolder, or smoke when tested in accordance with the method of test ASTM C411-61 (Hot-Surface Performance of High-Temperature Thermal Insulation) at a temperature to which it is exposed in service. In no case shall the test temperature be below 250° F.

306. Duct coverings shall not extend through walls or floors required to be firestopped or required to have a fire resistance rating. Duct linings shall be interrupted at fire dampers and fire doors so as not to interfere with their operation. Duct coverings and linings shall also be interrupted at the immediate area of operation of heat sources in a duct system involving electric resistance or fuel burning heaters.

307. Work involving the use of torches shall not be undertaken on ducts until the system has been shut down, the duct cleaned and all lining and covering material has been removed from the portion of the duct being repaired.

308. The materials, thickness and construction of ducts shall provide structural strength and durability in conformance with recognized good practice. Ducts which are constructed, braced and reinforced in accordance with the Installation Manual of the National Insulation Manufacturers Association — Sheet Metal and Air Conditioning Contractors National Association for Non-metallic Ducts or in accordance with the Duct Manuals of the Sheet Metal and Air Conditioning Contractors National Association (SMACCNA), Second Edition, 1963, Sect. 1 — Low Velocity and First Edition, 1965, Sect. 2 — High Velocity, or in accordance with the Guide and Data Book of the American Society

of Heating, Refrigerating and Air-Conditioning Engineers (ASHRAE), Chapter 31, 1965 Edition, shall be deemed as meeting the intent of this paragraph.

309. Ducts shall be made reasonably tight throughout and shall have no openings other than those required for proper operation and maintenance of the system. Wired glass may be used for inspection windows in ducts. Tape may be used for sealing joints but where exposed to the air in the duct, it shall be not more combustible than approved flameproofed fabric.

310. Return plenums and ducts, other than vertical ducts, shall be so constructed that the interior is accessible to facilitate the cleaning of possible accumulations of dust and combustible material in them (Appendix A, 2 and 3), except that accessibility is not required for ducts where all of the following conditions prevail:

(a) The occupancy is not productive of combustible material such as lint, dust, greasy vapors, etc. Such occupancies are banks, office buildings, churches, hotels and institutions (but not kitchens, service rooms and manufacturing portions).

(b) The return openings are at least 7 feet above the floor or are protected by corrosion-resistant metal screens of at least 14 mesh installed back of the grilles so that they will not draw in papers, refuse, cigarettes and other combustible solids.

(c) The minimum design velocity in the return from the particular occupancy is 1,000 feet per minute.

Clean-out openings at approximately 20-foot intervals shall be provided where accessibility to facilitate cleaning is required and where the ducts are smaller than 18 by 24 inches. Removable grilles of adequate size and accessibility may be accepted as clean-out openings.

311. Supply ducts, other than vertical, shall conform to the above requirement for return ducts, unless all of the supply air passes through either water spray or filters.

312. The clearance from metal ducts to stored combustible material shall not be less than 6 inches, and to combustible construction including plaster on wood lath not less than $\frac{1}{2}$ inch, except that these clearances may be disregarded for systems solely for ventilation, air cooling, or air conditioning without heating in small buildings, subject to approval by the authority having jurisdiction.

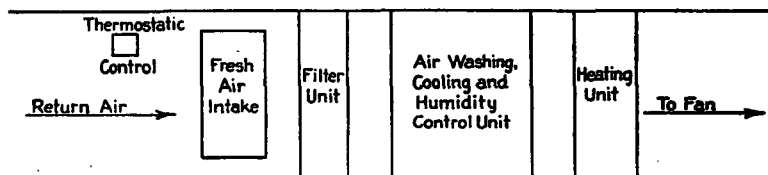


Fig. 1. Typical arrangement of filter, heating, cooling and other units.

313. Where ducts pass through walls, floors or partitions the opening in the construction around the duct shall not exceed $\frac{1}{2}$ -inch average clearance on all sides and shall be firestopped by packing with rope asbestos, mineral wool or other approved material to prevent the passage of flame and smoke.

Exception 1: This requirement may be disregarded where ducts are installed and enclosed as required under 315.

Exception 2: Where fire dampers are installed their proper clearance to building construction shall be maintained. See 905(e).

314. Where ducts pass through concealed ceiling spaces of combustible construction or are located inside combustible partitions or walls, either the ducts or the interior surfaces of such concealed ceiling space, partition or walls shall be protected with $\frac{1}{4}$ -inch asbestos or other approved insulating material or a clearance of $\frac{1}{2}$ -inch as specified in 312 shall be maintained between ducts and all combustible construction. The integrity of fire-stopping shall not be destroyed. The spaces between the ducts and the fire-stopping shall be filled solidly with brick, asbestos, mineral wool or other approved noncombustible material.

315. Ducts which pass through floors of buildings requiring the protection of vertical openings shall be enclosed with approved noncombustible walls having symmetrical fire resistance rating of not less than 1 hour when such ducts are located in a building less than 4 stories in height, and not less than 2 hours when such ducts are located in a building 4 stories or more in height. A fire resistive shaft used as a duct which conforms both with the above and the requirements for ducts need not be additionally enclosed.

(a) The enclosure of ducts shall not be required for branches which are cut off from the main portion of the duct by approved fire dampers.

(b) Ducts which are located in one story and have all duct openings extending through a floor to the story next above or

below may in lieu of such fire resistive enclosure be provided with approved fire dampers at each such point where the floor is pierced.

(c) Two or more ducts serving separate floors shall not be located within the same fire resistive enclosure unless approved fire dampers are installed where each branch is taken from such enclosure.

(d) The portion of a duct system below a floor which has a branch serving connectors which pierce the floor at more than one point is not required to be enclosed when all of the following are complied with.

1. Each connector has a cross sectional area less than 20 square inches.

2. The connectors pierce only one floor.

3. Each connector serves an air handling terminal enclosed with material having a melting point of not less than 1700° F, classed as noncombustible as defined in test procedure E136 of the American Society for Testing and Materials, located on the floor above and protected by the above mentioned enclosure.

4. The above mentioned duct system is of material having a melting point of not less than 1700° F, classed as noncombustible as defined in test procedure E136 of the American Society for Testing and Materials and conforms with requirements for Class 1 air duct materials of Underwriters' Laboratories, Inc., Standard for Air Ducts, UL181, April 1970.

(e) Where a branch serves connectors which pierce the floor at more than one point, that portion of the duct system below the floor shall be enclosed with construction having a symmetrical fire resistance rating of not less than 1 hour.

316. (a) No attic, basement, room or concealed space in a building shall be used as an integral part of a duct system unless it conforms to all the requirements for ducts. Such arrangements shall be subject to the approval of the authority having jurisdiction. Plenum chambers which conform to all the requirements for ducts may be located in any such portion of the building; such chambers shall not be used for storage or occupational purposes. A concealed space formed by a ceiling and floor above may be used as a plenum chamber, provided the installation conforms with the appropriate provisions in 316(b) and (c) below.

(b) The space between the ceiling and floor (or roof) of a floor and ceiling assembly or roof and ceiling assembly which has been tested in accordance with NFPA No. 251, Standard Methods of Fire Tests of Building Construction and Materials, and obtained not less than a one-hour fire resistance rating may be used in accordance with 316(a) provided:

1. No combustible materials are incorporated in the floor and ceiling construction.

2. Openings in such ceilings shall be permitted only when the area of such openings does not exceed the proportionate areas of such openings in the assembly tested.

3. The integrity of fire-stopping shall not be destroyed.

4. They are used for a supply air plenum. (They may also be used for a return air plenum if tested for that purpose.)

5. Electrical wiring in concealed spaces used as part of the air distribution system shall conform with Section 300-22 of the National Electrical Code, NFPA No. 70.

(c) The space between the ceiling and floor (or roof) of other than the fire resistive assemblies covered by 316(b) may be used in accordance with 316(a) provided there are no combustible materials in the concealed space, electrical wiring in such space complies with Section 300-22 of the National Electrical Code, NFPA No. 70, the ceiling material is constructed to resist deformation or collapse during installation and use and complies with the following:

1. They shall be made from a base material of metal or mineral.

2. All surfaces of ceiling material shall possess a flamespread rating of not over 25 without evidence of continued progressive combustion, and with a smoke developed rating of not higher than 50 or designated "Light" or "Negligible."

3. The ceiling material shall be supported by noncombustible material which if of metal shall have a melting point above 1400° F.

4. They shall not be subject to deterioration or deformation on long exposure to temperatures of 250° F., or under conditions of high humidity, excessive moisture or mildew.

5. They shall not be used on systems which operate with an air temperature higher than 250° F. entering the air ducts.

(d) Public corridors in institutional and residential occupancies except one- and two-family dwellings shall not be used as a portion of a supply or return air system serving adjoining areas other than toilet rooms, bathrooms, shower rooms, sink closets and similar auxiliary spaces opening directly on the corridor. This requirement shall not prohibit the use of mechanical ventilation for the corridors or incidental exfiltration because of pressure differential in special institutional occupancies. In apartment houses, this requirement shall not prohibit the use of a corridor as a source of make-up air through normal leakage around doors for interior exhaust fans in kitchens, appliances, bathrooms, and toilets.

NOTE: In accordance with 4-114 and 4-115 respectively of NFPA No. 101, 1970 (Code for Safety to Life from Fire in Buildings and Structures), institutional and residential occupancies are defined as follows:

Institutional — Hospitals, nursing homes, nurseries, homes for the aged, mentally retarded care institutions, penal institutions, reformatories, jails, and other similar occupancies.

Residential — Hotels, motels, apartment buildings, dormitories, orphanages, lodging or rooming houses.

(e) Exit passageways, stairways, ramps and other exits shall not be used as part of a supply, return, or exhaust system serving other areas of the building.

NOTE: For a definition of exits see NFPA No. 101, 1970, Code for Safety to Life from Fire in Buildings and Structures.

317. (a) Ducts shall not be built into a building in such a way as to impair the effectiveness of the fireproofing around steel or iron structural members, such as placing ducts between the fireproofing and the members protected, except in the case of beams or joists protected by a ceiling of a fire resistive floor and ceiling or roof and ceiling assembly.

(b) Where ducts and openings are employed in a fire resistive floor and ceiling assembly or roof and ceiling assembly, the duct materials tested shall be used and such openings shall be limited in size and adequately protected to preserve the required fire resistance.

NOTE: For information on designs of fire resistive assemblies incorporating air handling components, see Underwriters' Laboratories, Inc., Building Materials List under the heading, "Resistance Classification (Fire) — Floor or Roof and Ceiling Construction and Beam Protection."

(c) If access doors are necessary in a fire-resisting ceiling, they shall be limited to a maximum size of 400 square inches and be of construction equivalent in fire resistance to the ceiling. (For definition of fire-resisting ceiling, see 316(b).)

(d) Where the installation of the hangers for the components of an air duct system penetrates an existing ceiling of a fire resistive floor and ceiling assembly or roof and ceiling assembly and requires removal of a portion of that ceiling, materials used to repair the ceiling shall provide a construction equivalent to the existing ceiling or in lieu of repair of the existing ceiling, another ceiling of the same construction may be installed below the duct system.

318. Ducts shall not be located where they will be subject to damage or rupture. Where so located they shall be suitably protected.

319. Ducts shall be substantially supported. Hangers and brackets for supporting ducts shall be of metal.

4. Air Intakes and Outlets

401. Air shall not be recirculated from any space in which flammable vapors, flyings, or dust are present in quantities resulting in threshold limit values exceeding those recommended in the Threshold Limit Values for Toxic Dusts, Fumes and Mists, published by the American Conference of Governmental Industrial Hygienists, as determined with the fans off.

402. Discharge and exhaust air openings and recirculating air intakes shall be located at least 3 inches above the floor, except that protected floor inlets may be permitted, under seats, in theatres. When located less than 7 feet above the floor, inlet and outlet openings shall be protected by a substantial grille or screen, through the openings in which a half-inch sphere will not pass.

403. Fresh air intakes shall be protected by screens of corrosion-resistant material not larger than one-half inch mesh.

404. Care should be exercised in choosing the location of fresh air intakes to avoid drawing in combustible material and to minimize the hazard from fires in other structures.

405. Air inlet and outlet ceiling openings with combustible grilles may be permitted provided the installation of such grilles conforms to the following provisions:

(a) They shall be of such materials and installed in such a manner as will assure their falling from position before they ignite.

(b) They shall be installed not less than 7 feet above the floor.

(c) They shall be installed so as not to permit propagation of flame from one grille or unit to another.

(d) They shall not be installed in ceilings of fire resistive floor and ceiling or roof and ceiling assemblies unless paragraph 317(b) is complied with.

NOTE: Where applicable provisions on interior finish, NFPA Code for Safety to Life from Fire in Buildings and Structures (No. 101), and instructions to sprinklers, NFPA Standard for the Installation of Sprinkler Systems, (No. 13), shall also apply.

5. Air Filters

501. (a) Air filters shall be of approved types that will not burn freely or emit large volumes of smoke or other objectionable

products of combustion when attacked by flames. Filters qualifying as Class 1 and Class 2 shall be accepted as meeting these requirements. See Section 2, Definitions. An evaporative cooler containing a combustible filter and water evaporation medium, such as excelsior, shall not be used.

(b) The installation of approved automatic extinguishing equipment employing water, inert gas or other approved means in the enclosure of the air conditioning system to protect against combustion of material that may accumulate is recommended for systems other than those of the unit or cabinet type with blower capacity not exceeding 20,000 cubic feet per minute and which supply only one floor area or a portion thereof. Where sprinklers are installed, suitable provision should be made for drainage including adequate provision for overflow drains from any oil reservoirs installed at filters. In buildings not equipped with automatic sprinklers, the water supply may be taken from the house piping, if the supply is adequate for the purpose.

502. Liquid adhesive coatings used on air filters shall have a flash point not lower than 325° F., Cleveland open cup tester.

503. Liquid adhesive tanks into which removable filters are dipped should preferably be located outside the building or in a separate fire resistive room. Such tanks shall be of metal, equipped with tight-fitting covers and shall be kept tightly covered when not in actual use.

504. Where filters are flushed with liquid adhesives flowing through the air stream the system shall be arranged so that the filters cannot be flushed while the fan is in operation.

505. All air filters shall be kept free of excess dust and combustible material. Unit filters shall be renewed or cleaned when the resistance to air flow has increased to two times the original resistance or when the resistance has reached a value of recommended replacement by the manufacturer. A suitable draft gage should be provided for the purpose. Draft gages, of a type, which will operate a warning light or produce an audible signal when excessive dust loads have accumulated, are recommended. If the filters are of the automatic liquid adhesive type, sludge shall be regularly removed from the liquid adhesive reservoir.

6. Fans

601. When installed, fans shall be so located and arranged as to afford ready access for repairing, cleaning, inspection and lubricating. They should be placed on proper foundations or firmly secured to substantial supports.

602. Exposed openings into fan housings shall be protected with substantial metal screens or gratings to prevent accidents or the entry of foreign material.

603. Fans and air handling equipment connected thereto such as washers, filters, and heating and cooling units, should be located in a room cut off from other portions of the building used for storage or occupational purposes by construction having a fire resistance rating equivalent to that required for the enclosure of the main supply or return ducts but not less than one hour, where either of the following conditions prevail (see also 315):

(a) The main portion of the duct system served by the fan passes through floors of fire-resistive, protected noncombustible, or heavy timber construction, in which vertical openings are generally protected, or

(b) The system serves more than a single room of a public or institutional building. Examples of public buildings are schools, libraries, exhibition buildings, assembly halls, dance halls and theatres; and of institutional buildings, hospitals, asylums, sanitariums and jails.

NOTE: If the fan room is used as a plenum chamber, see 316 (a).

7. Electric Wiring and Equipment

701. Electric wiring and equipment shall be installed in accordance with the National Electrical Code. Lamps within the working spaces of the conditioning system shall be enclosed in fixtures of the marine (vaportight) type, except that germicidal lamps of a type which operate at relatively low exposed surface temperatures need not be so enclosed. A disconnecting means shall be installed within sight and easy reach, in the ungrounded leads of each power circuit to electrically operated components which are in unprotected locations and in other locations not readily accessible for service. In particular, reference should be made to Section 300-22 of the National Electrical Code (NFPA Standard No. 70).

702. Motors shall be located so that maintenance, such as oiling of bearings and replacing of brushes, can readily be accomplished. Open motors having commutators or collector rings shall be located or protected so that sparks cannot reach adjacent combustible material. Motors installed inside air ducts or plenum chambers, or inside unit type air conditioning equipment should be provided with protection devices designed to cut off current before temperatures reach a point where smoke may be generated. These may be inherent over-temperature protective devices or over-current protective devices of the thermal overload relay type.

8. Air Cooling and Heating Equipment

801. Mechanical refrigeration used with air duct systems shall be installed in accordance with nationally recognized safety practices. Installations conforming to the American Standard Safety Code for Mechanical Refrigeration B9.1 — 1964* shall be considered as meeting these requirements.

802. Heating equipment shall be installed in a standard manner with due regard to proper clearance between hot surfaces and woodwork and other combustible materials.

NOTE: The authority having jurisdiction should be consulted regarding standard requirements for installation of heating equipments.

803. Heating furnaces and cooling units using the same duct system and blower shall have the refrigeration coil located downstream from the heating furnace, unless the heating furnace is specifically approved for installation downstream from the coil, or the coil is located parallel to the heating furnace. When the heating furnace is located upstream from the coil, the coil shall be so designed or equipped as to not develop excessive temperatures or pressures. In those cases where the coil is located parallel to the heating furnace, dampers or other means used to control flow of air shall be adequate to prevent chilled air from entering the furnace section. If the dampers are manually operated means shall be provided to prevent operation of either unit unless the damper is in the full heat or cool position. Adequate means shall be provided for disposal of condensate and to prevent dripping of condensate on the heating element.

The capacity of the blower shall be adequate to overcome the external static resistance imposed by the combined heating and cooling units at the air throughput required for heating or cooling, whichever is greater.

Furnaces (including duct furnaces) may be installed downstream from evaporative coolers or air washers if the heating element is made of corrosion-resistant material. Stainless steel, ceramic-coated steel, or an aluminum-coated steel in which the bond between the steel and the aluminum is an iron-aluminum alloy, are considered to be corrosion-resistant. Air washers operating with chilled water which delivers air below the dew point of the ambient air at the appliance are considered as refrigeration systems.

804. When the same coil is used for both heating and cooling, valves shall be provided to prevent chilling of the boiler during the operation of the cooling system.

*Published by the American Society of Heating, Refrigeration and Air Conditioning Engineers, 345 East 47th Street, New York, New York 10017.

When hot water heating boilers are connected to heating coils located in air handling units where they may be exposed to refrigerated air circulation, such boiler piping systems shall be equipped with flow control valves or other automatic means to prevent gravity circulation of the boiler water during the cooling cycle.

805. Where heat sources are introduced in a duct system involving electric resistance or fuel burning heaters, the adjacent duct covering and lining shall comply with 305(b).

NOTE: Section 424 — Part F in particular, of the National Electrical Code (NFPA Standard No. 70) should also be consulted; as well as appropriate fuel burning heater control standards.

FIRE CONTROL

9. Automatic Fire Doors and Fire Dampers

901. Where Fire Doors Are Required. Duct systems should be designed so it will not be necessary to have ducts pass through fire walls. Where ducts, or outlets from or inlets to ducts pass through a fire wall, each opening in the fire wall shall be provided with

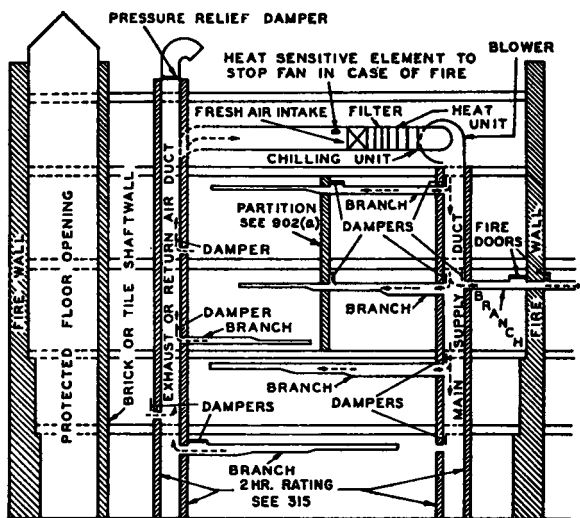


Fig. 2. Typical installation of air conditioning system in building of fire resistive, protected noncombustible, or heavy timber construction.

approved automatic closing fire doors, satisfactory for Class A openings, on both sides of the fire wall.

902. Where Fire Dampers Are Required. Approved fire dampers shall be provided as follows, subject to the exceptions in 903:

(a) Where a duct passes through a partition which serves to restrict the spread of fire and is required to have a standard fire resistance rating of not less than 2 hours.

(b) At each opening in a required enclosure of a vertical shaft.

(c) Where duct systems serve two or more floors, (1) at each direct air outlet or air inlet in the enclosure for a main vertical duct, or at each point where such vertical duct pierces a floor it serves, (2) and at the point where each branch duct pierces the enclosure for a main vertical duct (see Fig. 2, 315 and 905(e)).

(d) Where an aluminum duct or Class 1 duct regardless of size passes through a fire resistive floor, unless encased as specified in 315.

(e) At fresh air intakes except where permission to omit them, because of light exposure, is granted by the authority having jurisdiction.

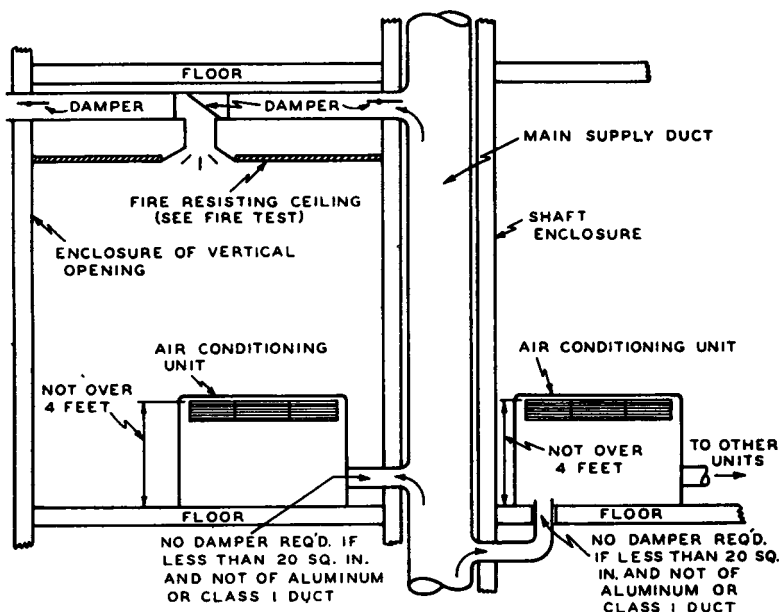


Fig. 3. Typical fire damper requirements and examples of locations where dampers are not required.

(f) As an alternate to enclosure of vertical ducts which extend through only one floor, dampers to be located at each point where the floor is pierced (see 315(b)).

(g) Where ducts installed above a ceiling of a fire resistive floor and ceiling assembly or roof and ceiling assembly are provided with openings in the ceiling, and such openings require fire dampers for protection to conform with the design of the fire resistive assembly as tested in accordance with NFPA No. 251, Standard Methods of Fire Tests of Building Construction and Materials (see also 315(b)).

NOTE: For information on designs of fire resistive assemblies incorporating openings in the ceiling, see Underwriters' Laboratories, Inc., Building Materials List under the heading, "Resistance Classification (Fire) — Floor or Roof and Ceiling Construction and Beam Protection."

903. Exception: *Fire dampers required under 902 may be omitted where any of the following conditions prevail:*

(a) In branch ducts, not of aluminum or Class 1 duct, having a cross-sectional area of less than 20 square inches which supply only air conditioning units discharging air at not over 4 feet above the floor.

(b) Where a duct less than 20 square inches in cross-sectional area and not made of aluminum or Class 1 duct pierces the floor at one place only and supplies air conditioning units in one story only that discharge air at not over 4 feet above the floor (see Fig. 3 and 315(d)).

(c) In buildings where floor openings are not required to be protected.

(d) In duct systems serving only one floor and used only for exhaust of air to the outside and not penetrating a fire wall or partition which serves to restrict the spread of fire and is required to have a standard fire resistance rating of not less than two hours, or passing entirely through the enclosure for a vertical shaft.

(e) Where branch ducts connect to exhaust risers in which the air flow is upward and subducts at least 22 inches in length are carried up inside the riser from each inlet (see Fig. 4).

904. Installation of Fire Doors.

(a) Fire doors shall be approved for the protection of openings in fire walls (Class A openings), (see NFPA Standard No. 80).

(b) Suitable hand hole openings shall be provided to make all fire doors in ducts accessible for inspection and servicing.

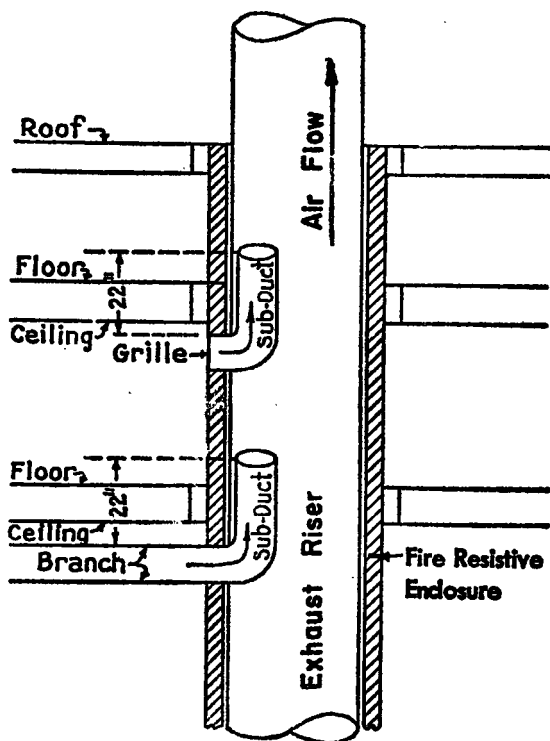


Fig. 4. Typical arrangement of sub-ducts [paragraph 903(e)].

(c) Fire doors shall be arranged to close automatically and remain tightly closed, upon the operation of an approved fusible link or other approved heat actuated device located where readily affected by an abnormal rise of temperature in the duct. Fusible links shall have a temperature rating approximately 50° F. above the maximum temperature that would normally be encountered with the system in operation or shut down but not less than 165° F.

(d) Fire doors shall be so arranged that the disruption of the duct will not cause failure to protect the fire wall opening.

NOTE: This may be accomplished by locating the fire door in a substantial sleeve securely fastened to the wall.

905. Construction of Fire Dampers. Approved fire dampers shall have the following performance characteristics:

(a) They shall be arranged to close automatically in event of abnormal high temperature.

NOTE: Automatic closure is usually effected upon operation of an approved fusible link or other approved heat actuated device located where readily affected by an abnormal rise of temperature in the duct. Fusible links should have a temperature rating approximately 50° F. above the maximum temperature that would normally be encountered with the system in operation or shut down.

(b) They shall provide the maximum practical barrier to passage of air when in the closed position.

(c) They shall remain in the closed position under fire conditions.

(d) They shall have resistance to corrosion.

(e) They shall be so installed as to stay in place at the protected opening, even though the duct is disrupted during a fire, such as by the use of a substantial sleeve or frame secured by perimeter angles on both sides of the opening. Fire dampers shall be installed in accordance with the conditions of their approval and the manufacturer's instructions.

(f) Suitable hand hole openings with tightly fitted covers shall be provided to make them accessible for inspection and maintenance.

(g) They shall possess a 1½-hour standard fire protection rating in accordance with UL 555, Standard for Fire Dampers, except for dampers protecting openings in fire-resisting ceilings.

NOTE: Fire dampers have been tested to determine that they possess a 1½-hour fire protection rating, including dampers constructed in accordance with SMACCNA Drawings MB-12H, MB-14H, SB-10H, and SB-14H (1966). Other designs which have also been tested may be found in the Underwriters' Laboratories, Inc., Building Materials List.

For the construction of dampers in fire-rated floor or roof-and-ceiling assemblies, tested in accordance with NFPA No. 251 (Standard Method of Fire Tests of Building Construction and Materials), see the test result of the testing laboratory. The Building Materials List of Underwriters' Laboratories, Inc., illustrates many fire-rated floor and roof-and-ceiling assemblies tested with air conditioning ducts that pierce the ceiling of the assembly and with fire dampers installed. Means other than fire dampers have also been used for ceiling opening protection.

(h) Fire dampers provided in ducts used solely for exhaust of air to the outside shall be installed in such a way that they will not interfere with the flow of air in the main duct.

906. The designer of an air duct system shall show on the plans the location of all automatic fire doors and fire dampers as required by this Standard.