

RATIONALE

AS1958 HAS BEEN REAFFIRMED TO COMPLY WITH THE SAE FIVE-YEAR REVIEW POLICY.

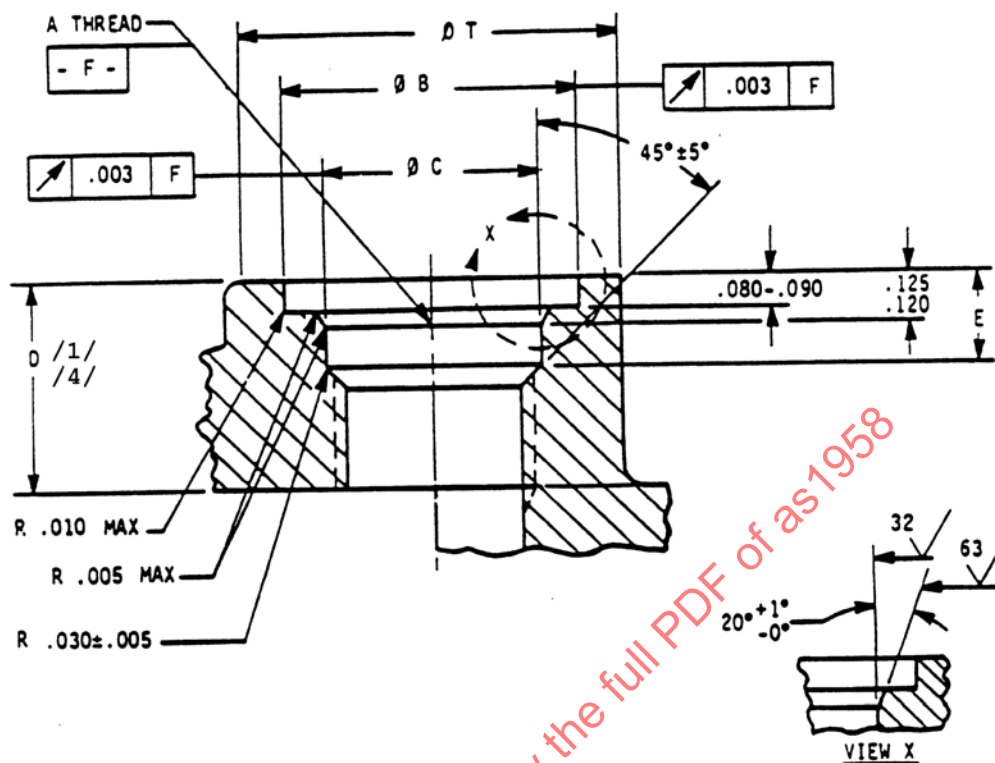


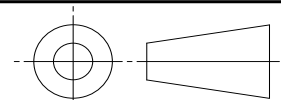
FIGURE 1

TABLE 1

PORT NUMBER	NOMINAL TUBE OD	A THREAD MIL-S-8879 CLASS 3B	ØB	ØC	D	E	ØT PORT DIA /4/
	REF		+ .005 - .000	+ .002 - .000	MIN	± .005	MIN
AS1958-02	.125	.4375-28UNJEF	.670	.473	.550	.225	.80
AS1958-03	.188	.5000-28UNJEF	.733	.540	.520	.225	.84
AS1958-04	.250	.5625-24UNJEF	.795	.603	.565	.225	.92
AS1958-05	.312	.6250-24UNJEF	.858	.666	.590	.225	.98
AS1958-06	.375	.6875-24UNJEF	.905	.728	.620	.225	1.03
AS1958-08	.500	.9375-20UNJEF	1.155	.958	.745	.225	1.40
AS1958-10	.625	1.0625-18UNJEF	1.280	1.083	.830	.225	1.60
AS1958-12	.750	1.2500-18UNJEF	1.499	1.271	.950	.225	1.83
AS1958-16	1.000	1.5000-18UNJEF	1.765	1.521	.950	.225	2.20
AS1958-20	1.250	1.8750-16UNJ	2.155	1.922	1.000	.265	2.80

SAE values your input. To provide feedback on this Technical Report, please visit <http://www.sae.org/technical/standards/AS1958>

THIRD ANGLE PROJECTION



CUSTODIAN: E-25

PROCUREMENT SPECIFICATION: NONE

SAE Aerospace
An SAE International Group

AEROSPACE STANDARD

PORT-FLUID CONNECTION, RING LOCKED
INSERT, STANDARD DIMENSIONS FOR

SAE AS1958
SHEET 1 OF 2