

SAE Technical Standards Board Rules provide that: "This report is published by SAE to advance the state of technical and engineering sciences. The use of this report is entirely voluntary, and its applicability and suitability for any particular use, including any patent infringement arising therefrom, is the sole responsibility of the user."

SAE reviews each technical report at least every five years at which time it may be revised, reaffirmed, stabilized, or cancelled. SAE invites your written comments and suggestions.

REV.
B

AS39029/70

FEDERAL SUPPLY CLASS
5999

RATIONALE

REVISION IS REQUIRED TO CORRECT A TOOL PART NUMBER IN THE TOOL TABLE, TO CLARIFY THE ENVIRONMENTAL REQUIREMENTS, TO ADD METRIC EQUIVALENTS, AND TO UPDATE DOCUMENT TO CURRENT SAE GUIDELINES.

NOTICE

THE COMPLETE REQUIREMENTS FOR PROCURING THE PRODUCT DESCRIBED HEREIN SHALL CONSIST OF THIS DOCUMENT AND THE LATEST ISSUE OF AS39029.

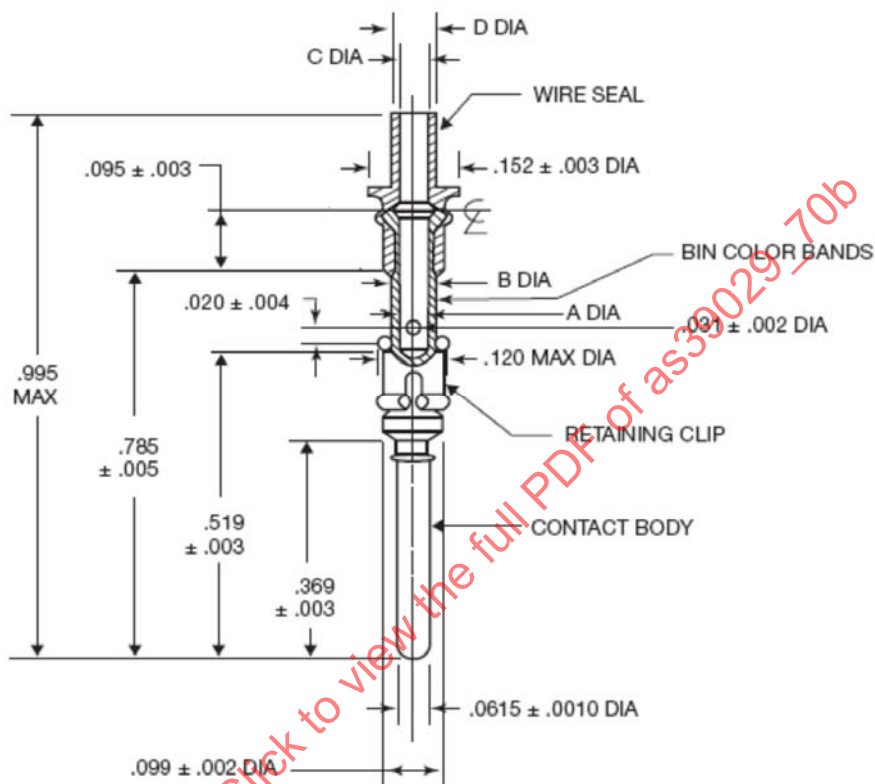


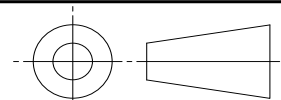
FIGURE 1 - AS39029/69 SOCKET CONTACT

TABLE 1 - FIGURE 1 METRIC EQUIVALENTS

INCHES	MILLIMETERS	INCHES	MILLIMETERS	INCHES	MILLIMETERS
.0010	0.0254	.031	0.787	.519	13.18
.002	0.051	.0615	1.56	.785	19.94
.003	0.076	.095	2.41	.995	25.27
.004	0.102	.120	3.05		
.005	0.127	.152	3.86		
.020	0.508	.369	9.37		

SAE values your input. To provide feedback on this Technical Report, please visit <http://www.sae.org/technical/standards/AS39029/70B>

THIRD ANGLE PROJECTION



CUSTODIAN: AE-8/AE-8C1

PROCUREMENT SPECIFICATION: AS39029



AEROSPACE STANDARD

(R) CONTACT, ELECTRICAL CONNECTOR, PIN,
CRIMP REMOVABLE,
FOR AS85028 CONNECTORS

AS39029/70
SHEET 1 OF 3

REV.
B

Copyright 2014 SAE International
All rights reserved. No part of this publication may be reproduced, stored in a retrieval system or transmitted, in any form or by any means, electronic, mechanical, photocopying, recording, or otherwise, without the prior written permission of SAE.

TO PLACE A DOCUMENT ORDER: Tel: 877-606-7323 (inside USA and Canada)
Fax: 724-776-0790

Tel: +1 724-776-4970 (outside USA)
Email: CustomerService@sae.org

SAE WEB ADDRESS: <http://www.sae.org>

ISSUED 2001-03 REVISED 2014-07

TABLE 2 - CONTACT DIMENSIONS

BIN CODE	A DIA ±.002	B DIA ±.002	C DIA ±.003	D DIA ±.003
387	.032 (0.81)	.063 (1.60)	.027 (0.69)	.055 (1.40)
388	.046 (1.17)	.077 (1.96)	.046 (1.17)	.070 (1.78)
389	.063 (1.60)	.097 (2.46)	.062 (1.57)	.086 (2.18)

TABLE 3 - MARKING AND DESIGN CHARACTERISTICS

BIN CODE	COLOR BANDS			MATING END SIZE	WIRE BARREL SIZE	WIRE RANGE	WIRE SEAL COLOR	INSULATION OD RANGE	TYPE	CLASS
	1ST	2ND	3RD							
387	ORANGE	GRAY	VIOLET	16	24	24-28	RED	.0410 (1.04) - .0550 (1.40)	A	1/
388	ORANGE	GRAY	GRAY	16	20	20-24	LAVENDER	.0510 (1.30) - .0700 (1.78)	A	1/
389	ORANGE	GRAY	WHITE	16	16	16-20	BROWN	.0660 (1.68) - .0870 (2.21)	A	1/

1/ MAXIMUM OPERATING TEMPERATURE 150 °C

TABLE 3 - TOOL REQUIREMENTS

BIN CODE	BASIC CRIMPING TOOL	POSITIONER	INSTALLING TOOL	REMOVAL TOOL
387	M22520/1-01	M22520/1-17	M81969/23-01 1/ DAK1-16P-S	M81969/22-01 1/ DRK222
388				
389				

1/ DANIELS MANUFACTURING CORPORATION PART NUMBER IS SPECIFIED. TOOLS MAY BE PROVIDED BY OTHER VENDORS IF THEY ARE DETERMINED TO BE EQUIVALENT BY THE QUALIFYING ACTIVITY.

TABLE 5 - PART NUMBERS

AS39029 PART NUMBER	BIN CODE	SUPERSEDED PART NUMBER(S)
M39029/70-387	387	M39029/70-1
M39029/70-388	388	M39029/70-2
M39029/70-389	389	M39029/70-3

DETAIL SPECIFICATION REQUIREMENTS:

1. DESIGN:

CONTACT SHALL BE DESIGNED IN ACCORDANCE WITH FIGURE 1, AND TABLES 2 AND 3. DIMENSIONS ARE IN INCHES AND APPLY AFTER PLATING. UNLESS OTHERWISE SPECIFIED, SPHERICAL END DIMENSIONS SHALL CONFORM TO AS39029. ALL DIMENSIONS IN PARENTHESES ARE METRIC EQUIVALENTS, PROVIDED FOR GENERAL INFORMATION ONLY AND ARE BASED ON 1 INCH = 25.4 MM.

2. TOOLS:

TOOLS REQUIRED FOR CRIMPING CONTACTS TO WIRE/CABLE AND THE INSTALLING/REMOVAL FROM THE CONNECTOR SHALL BE IN ACCORDANCE WITH TABLE 4. DUE TO THE SEALING GROMMET ON TOP OF EACH CONTACT WIRE BARREL, A SPECIAL INSERTION TOOL IS REQUIRED WHICH IS INSERTED THROUGH THE CONNECTOR FROM THE FRONT, ATTACHED TO THE MATING END OF THE CONTACT, AND THEN PULLED INTO THE CONNECTOR. A RELEASE ON THE TOOL IS ACTUATED, AND THE TOOL CAN BE REMOVED FROM THE CONTACT.

3. PART NUMBERS:

CONTACT PART NUMBERS SHALL BE IN ACCORDANCE WITH TABLE 5. SUPERSEDED PART NUMBERS ARE AS SPECIFIED.

	AEROSPACE STANDARD	AS39029/70 SHEET 2 OF 3	REV. B
	(R) CONTACT, ELECTRICAL CONNECTOR, PIN, CRIMP REMOVABLE, FOR AS85028 CONNECTORS		