

REV.
B

AS4735

RATIONALE

FEDERAL SUPPLY CLASS
4730

CORRECTED PASSIVATION SPECIFICATION AND TYPES AND ADDED PRI-QPL REQUIREMENTS.

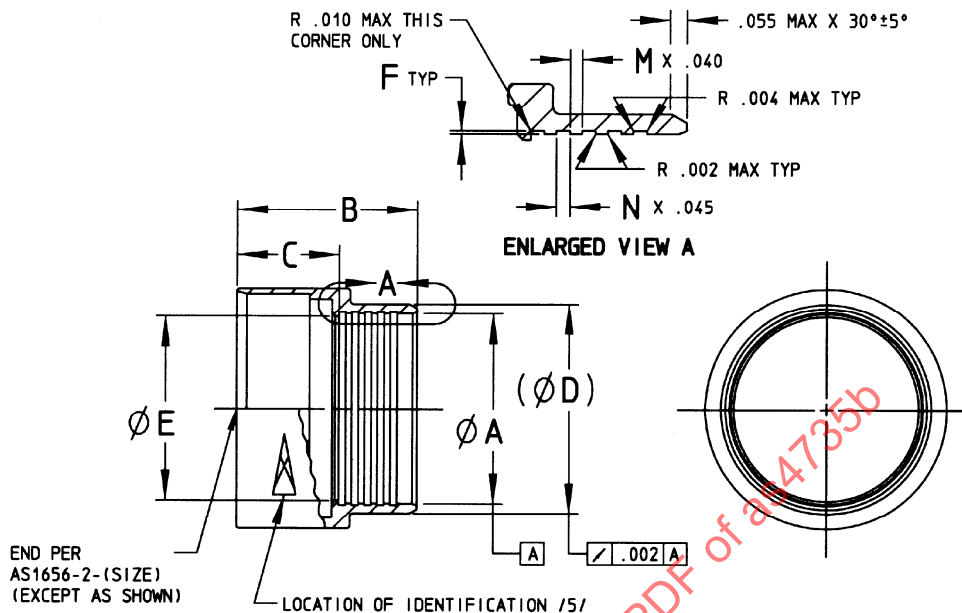


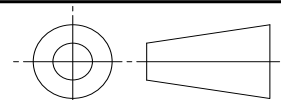
FIGURE 1 - FEMALE FERRULE

TABLE 1 - DIMENSIONS AND WEIGHTS /6/

BASIC NO. AS4735 /14/ SIZE CODE	NOM TUBE SIZE REF	A ±.003	B ±.010	C ±.015	D REF	E	F ±.001	M	N	LB/EA NOM REF ALUM	LB/EA NOM REF CRES	LB/EA NOM REF TI
08	.500	.507	.955	.516	.622	.470	.007	3	4	.010	.030	.017
10	.625	.633	.955	.516	.747	.595	.007	3	4	.012	.035	.020
12	.750	.758	1.035	.596	.887	.720	.007	3	4	.018	.050	.028
16	1.000	1.008	1.193	.676	1.139	.970	.008	4	5	.026	.074	.042
20	1.250	1.259	1.193	.676	1.389	1.220	.008	4	5	.031	.088	.050
24	1.500	1.509	1.282	.676	1.639	1.470	.009	5	6	.040	.112	.064
28	1.750	1.759	1.282	.676	1.889	1.720	.009	5	6	.045	.127	.072
32	2.000	2.009	1.322	.706	2.142	1.970	.009	5	6	.053	.151	.086
36	2.250	2.259	1.338	.706	2.392	2.220	.009	5	6	.060	.168	.096
40	2.500	2.510	1.338	.706	2.642	2.470	.011	5	6	.064	.181	.103
48	3.000	3.010	1.338	.706	3.142	2.970	.011	5	6	.074	.210	.119
56	3.500	3.512	1.368	.706	3.642	3.470	.012	6	7	.086	.241	.137
64	4.000	4.012	1.546	.706	4.151	3.970	.013	7	8	.113	.319	.181

SAE values your input. To provide feedback
on this Technical Report, please visit
<http://www.sae.org/technical/standards/AS4735B>

THIRD ANGLE PROJECTION



CUSTODIAN: G-3/G-3A

PROCUREMENT SPECIFICATION: /4/ AS1650



AEROSPACE STANDARD

FEMALE FERRULE, THREADLESS -
FLEXIBLE, FIXED CAVITY,
SELF-BONDING, SWAGED

AS4735
SHEET 1 OF 3

REV.
B

NOTES:

/1/ MATERIAL:

- a. CODE LETTER A - TYPE 2024-T6, T851, T8510, OR T8511 ALUMINUM ALLOY PER AMS-QQ-A-225/6, AMS4120, AMS4339, AMS-QQ-A-200/3, WW-T-700/3, ASTM B211, OR ASTM B241.
- b. CODE LETTER C -
 1. TYPE 17-4PH, CONDITION H1075 STA, CORROSION RESISTANT STEEL PER AMS5643.
 2. TYPE 15-5PH, CONDITION H1150 STA, CORROSION RESISTANT STEEL PER AMS5659.
- c. CODE LETTER T - TYPE 6Al-4V, CONDITION A, TITANIUM ALLOY PER AMS4928 OR AMS4967 (MIL-T-9047).

2. HEAT TREATMENT:

- a. MATERIAL CODE LETTER A - IF THE RAW MATERIAL IS PROCURED IN THE SOLUTION TREATED CONDITION, AGE TO THE FINAL CONDITION PER AMS-H-6088 OR AMS2770.
- b. MATERIAL CODE LETTER C -
 1. TYPE 17-4PH - AGE TO CONDITION H1075 PER MIL-H-6875 OR AMS2759/3.
 2. TYPE 15-5PH - AGE TO CONDITION H1150 PER MIL-H-6875 OR AMS2759/3.
- c. MATERIAL CODE LETTER T - NONE.

3. FINISH:

- a. MATERIAL CODE LETTER A - CHEMICAL CONVERSION COAT PER MIL-C-5541, CLASS 3.
- b. MATERIAL CODE LETTER C - PASSIVATE PER AMS2700 TYPE 2 OR TYPE 8.
- c. MATERIAL CODE LETTER T - NONE.

/4/ PROCUREMENT SPECIFICATION: AS1650 UNLESS SPECIFIED OTHERWISE ON THIS STANDARD. PRODUCT SUPPLIED TO THIS SPECIFICATION SHALL BE MANUFACTURED BY AN ACCREDITED MANUFACTURER AS LISTED IN THE PERFORMANCE REVIEW INSTITUTE (PRI) QUALIFIED PRODUCTS LIST (QPL) PRI-QPL-AS1650 FOR THIS STANDARD. SEE www.eAuditNet.com FOR CURRENT QPL ONLINE.

/5/ IDENTIFICATION: MARK PER AS478-30 USING .062 INCH OR LARGER CHARACTERS. MARK AS A MINIMUM THE MANUFACTURER'S NAME, TRADEMARK OR CAGE CODE, COMPLETE "AS" NUMBER AND DATE OF MANUFACTURE IN QUARTERS (1Q98 = FIRST QUARTER 1998). SIZES 12 AND SMALLER MAY BE INDIVIDUALLY BAGGED WITH A TAG PER AS478-35D CONTAINING THE PREVIOUS INFORMATION.


/6/ OTHER DIMENSIONS AND TOLERANCES ARE SPECIFIED AND CONTROLLED BY THE SUPPLIER. THE SUPPLIER IS RESPONSIBLE TO ENSURE COMPATIBILITY WITH THE ASSEMBLY AND COMPLIANCE WITH THE REQUIREMENTS OF THE PROCUREMENT SPECIFICATION.

7. INVENTORIED PARTS CONFORMING TO THE PREVIOUS ISSUE MAY BE USED TO DEPLETION.

8. A CHANGE BAR (I) LOCATED IN THE LEFT MARGIN IS FOR THE CONVENIENCE OF THE USER IN LOCATING AREAS WHERE TECHNICAL REVISIONS, NOT EDITORIAL CHANGES, HAVE BEEN MADE TO THE PREVIOUS ISSUE OF THIS DOCUMENT. AN (R) SYMBOL TO THE LEFT OF THE DOCUMENT TITLE INDICATES A COMPLETE REVISION OF THE DOCUMENT, INCLUDING TECHNICAL REVISIONS. CHANGE BARS AND (R) ARE NOT USED IN ORIGINAL PUBLICATIONS NOR IN DOCUMENTS THAT CONTAIN EDITORIAL CHANGES ONLY.

9. INTERPRETATION OF DRAWING PER AS4296.

10. SURFACE TEXTURE: SYMBOLS PER ASME Y14.36M. REQUIREMENTS PER ASME B46.1. UNLESS OTHERWISE SPECIFIED, MACHINED SURFACES TO BE 125 MICROINCHES Ra.

	AEROSPACE STANDARD	AS4735 SHEET 2 OF 3	REV. B
	FEMALE FERRULE, THREADLESS - FLEXIBLE, FIXED CAVITY, SELF-BONDING, SWAGED		