

THE REQUIREMENTS FOR ACQUIRING THE PRODUCT DESCRIBED HEREIN SHALL CONSIST OF THIS SPECIFICATION SHEET AND THE LATEST ISSUE OF SAE AS85049.

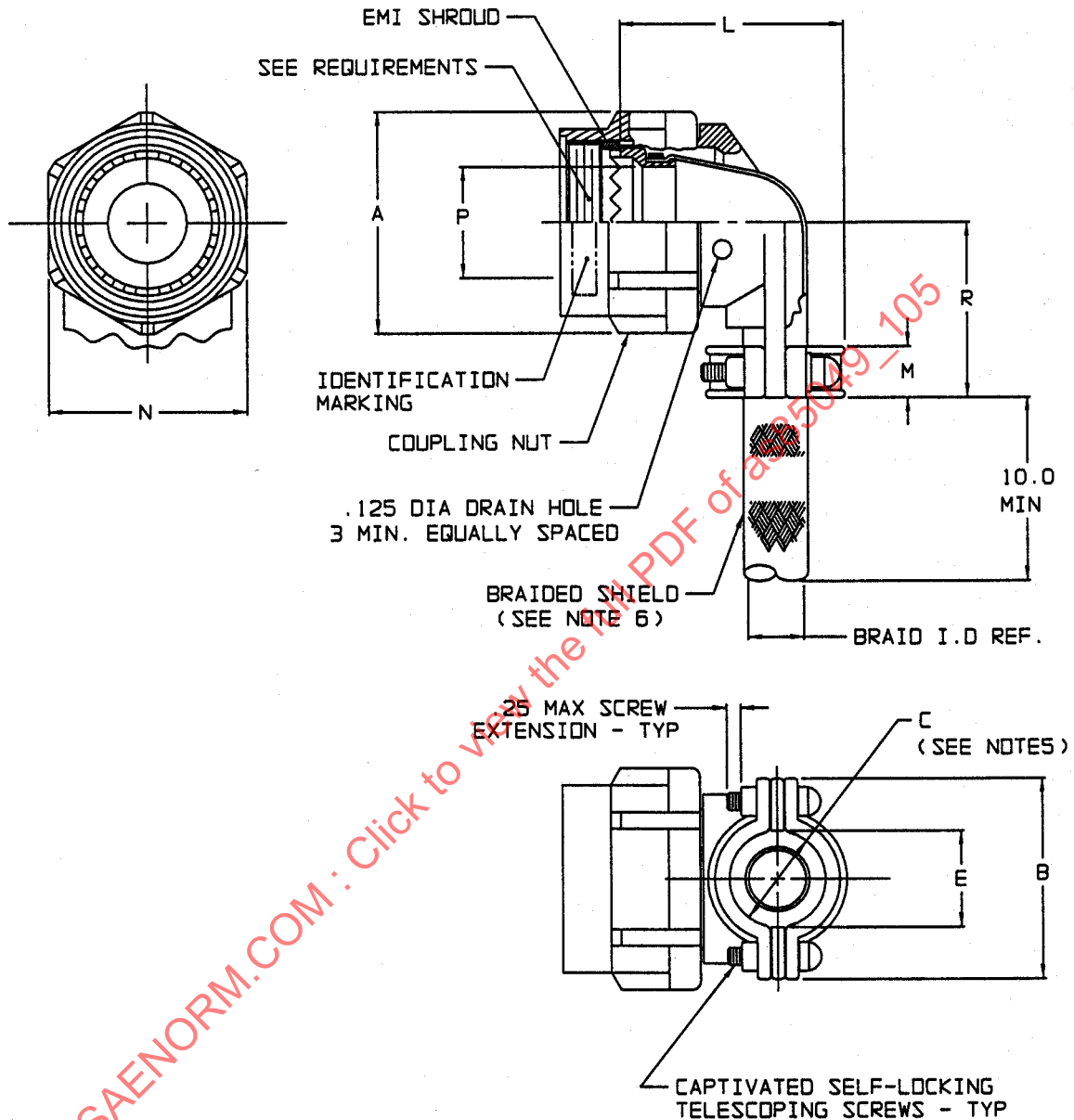
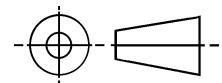


FIGURE 1 - CONFIGURATION AND DIMENSIONS

THIRD ANGLE PROJECTION



CUSTODIAN: AE-8/AE-8C1

**SAE** The Engineering Society  
For Advancing Mobility  
Land Sea Air and Space  
**INTERNATIONAL**  
400 Commonwealth Drive, Warrendale, PA 15096-0001

### AEROSPACE STANDARD

CONNECTORS, ACCESSORIES, COMPOSITE,  
RFI/EMI, ELECTRICAL, STRAIN RELIEF, 90°,  
SELF-LOCKING, CATEGORY 3C  
(FOR MIL-DTL-38999 SERIES III AND IV CONNECTORS)

**AS85049/105**  
SHEET 1 OF 3

TABLE 1 - SHELL SIZES AND DIMENSIONS

SHELL SIZE	A MAX DIA	B MAX	C ± .031 DIA SEE NOTE 5	E MIN	L MAX	M ± .03	N HEX	P MIN	R MAX	BRAID I.D. REF	SCREW SIZE
09	.858 ( 21.79 )	.980 ( 24.89 )	.265 ( 6.73 )	.229 ( 5.82 )	1.128 ( 28.65 )	.375 ( 9.53 )	.750/.736 ( 19.05/18.69 )	.264 ( 6.71 )	.94 ( 23.88 )	.375 ( 9.53 )	4-40
11	.984 ( 24.99 )	1.05 ( 26.67 )	.310 ( 7.87 )	.274 ( 6.96 )	1.168 ( 29.67 )	.375 ( 9.53 )	.875/.860 ( 22.23/21.84 )	.390 ( 9.91 )	1.00 ( 25.40 )	.375 ( 9.53 )	4-40
13	1.157 ( 29.39 )	1.20 ( 30.48 )	.390 ( 9.91 )	.354 ( 8.99 )	1.248 ( 31.70 )	.406 ( 10.31 )	1.000/.980 ( 25.40/24.89 )	.504 ( 12.80 )	1.12 ( 27.69 )	.500 ( 1.27 )	6-32
15	1.280 ( 32.51 )	1.30 ( 33.02 )	.506 ( 12.85 )	.470 ( 11.94 )	1.368 ( 34.75 )	.406 ( 10.31 )	1.125/1.100 ( 28.58/27.94 )	.630 ( 16.00 )	1.19 ( 30.23 )	.500 ( 1.27 )	6-32
17	1.406 ( 35.71 )	1.44 ( 36.58 )	.591 ( 15.01 )	.555 ( 14.10 )	1.448 ( 36.78 )	.406 ( 10.31 )	1.250/1.224 ( 31.75/31.09 )	.756 ( 19.20 )	1.37 ( 34.89 )	.781 ( 19.84 )	6-32
19	1.516 ( 38.51 )	1.56 ( 39.62 )	.661 ( 16.79 )	.625 ( 15.88 )	1.528 ( 38.61 )	.406 ( 10.31 )	1.375/1.348 ( 34.93/34.24 )	.843 ( 21.41 )	1.44 ( 36.58 )	.781 ( 19.84 )	6-32
21	1.642 ( 41.51 )	1.69 ( 42.92 )	.744 ( 18.90 )	.708 ( 17.98 )	1.648 ( 41.86 )	.406 ( 10.31 )	1.500/1.469 ( 38.10/37.31 )	.969 ( 24.61 )	1.56 ( 39.67 )	1.000 ( 25.40 )	6-32
23	1.768 ( 44.91 )	1.77 ( 44.96 )	.826 ( 20.98 )	.790 ( 20.07 )	1.688 ( 42.88 )	.406 ( 10.31 )	1.625/1.581 ( 41.28/40.16 )	1.091 ( 27.71 )	1.69 ( 42.85 )	1.000 ( 25.40 )	6-32
25	1.890 ( 48.01 )	1.89 ( 48.01 )	.896 ( 22.76 )	.860 ( 21.84 )	1.758 ( 44.65 )	.406 ( 10.31 )	1.750/1.690 ( 44.45/42.93 )	1.217 ( 30.91 )	1.81 ( 46.02 )	1.250 ( 31.75 )	6-32

## NOTES:

- DIMENSIONS ARE IN INCHES.
- METRIC EQUIVALENTS ARE GIVEN FOR GENERAL INFORMATION ONLY AND ARE BASED UPON 1 INCH = 25.4 MM.
- MILLIMETERS ARE IN PARENTHESES.
- DIMENSIONS APPLY AFTER PLATING.
- CABLE ENTRY IS MEASURED WITH SADDLE BARS CLOSED AND BOTTOMED ON CLAMP EARS.
- FOR SHIELD SPLICE/TERMINATION USE M85049/93 SPLIT SUPPORT RING.
- DETENTED SELF-LOCKING HAS A POSITIVE AUDIBLE, DETENTED COUPLING.

## REQUIREMENTS:

- CONNECTOR ACCESSORY DESIGN AND CONSTRUCTION:

DIMENSIONS AND CONFIGURATIONS: SEE FIGURE 1.

- INTERFACE DIMENSIONS: IN ACCORDANCE WITH SAE AS85049, FIGURE 3.
- ACCESSORIES: CONSIST OF A COUPLING NUT, 90° CLAMP STRAIN RELIEF, BRAIDED SHIELD AND SADDLE BARS. THE COUPLING NUT SHALL BE CAPTIVATED TO THE CLAMP AND IS FREE TO ROTATE.
- CLAMP SHALL HAVE NO PROTRUSIONS OR SHARP EDGES WHICH MAY PINCH CABLE.
- MATERIAL AND FINISH: IN ACCORDANCE WITH SAE AS85049  
CLAMP BODY, COUPLING AND SADDLE CLAMPS: COMPOSITE (NON-CONDUCTIVE NO FINISH)  
SELF-LOCKING TELESCOPING SCREWS AND WASHERS: 300 SERIES CORROSION-RESISTANT STEEL/PASSIVATED  
BRAID: 34 GAUGE WIRE, COPPER, NICKEL PLATED, 50 MICRO-INCHES MINIMUM THICKNESS  
BRAID CONSTRUCTION: IN ACCORDANCE WITH MIL-DTL-27500, LETTER "N"  
INTERFACE AND SHROUD: BRASS, NICKEL PLATED  
BRAID RETENTION DEVICE: ALUMINUM/IRIDITE PER MIL-C-5541 OR 300 SERIES CORROSION RESISTANT STEEL/  
PASSIVATED OR COPPER/TIN PLATED