

SAE Technical Standards Board Rules provide that: "This report is published by SAE to advance the state of technical and engineering sciences. The use of this report is entirely voluntary, and its applicability and suitability for any particular use, including any patent infringement arising therefrom, is the sole responsibility of the user."

SAE reviews each technical report at least every five years at which time it may be reaffirmed, revised, or cancelled. SAE invites your written comments and suggestions.

AS85049/2

Submitted for recognition as an American National Standard

FEDERAL SUPPLY CLASS
5935

NOTICE

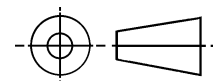
THIS DOCUMENT HAS BEEN TAKEN DIRECTLY FROM U.S. MILITARY SPECIFICATION MIL-C-85049/2A AND CONTAINS ONLY MINOR EDITORIAL AND FORMAT CHANGES REQUIRED TO BRING IT INTO CONFORMANCE WITH THE PUBLISHING REQUIREMENTS OF SAE TECHNICAL STANDARDS. THE INITIAL RELEASE OF THIS DOCUMENT IS INTENDED TO REPLACE MIL-C-85049/2A. ANY PART NUMBERS ESTABLISHED BY THE ORIGINAL SPECIFICATION REMAIN UNCHANGED.

THE ORIGINAL MILITARY SPECIFICATION WAS ADOPTED AS AN SAE STANDARD UNDER THE PROVISIONS OF THE SAE TECHNICAL STANDARDS BOARD (TSB) RULES AND REGULATIONS (TSB 001) PERTAINING TO ACCELERATED ADOPTION OF GOVERNMENT SPECIFICATIONS AND STANDARDS. TSB RULES PROVIDE FOR (A) THE PUBLICATION OF PORTIONS OF UNREVISED GOVERNMENT SPECIFICATIONS AND STANDARDS WITHOUT CONSENSUS VOTING AT THE SAE COMMITTEE LEVEL, AND (B) THE USE OF THE EXISTING GOVERNMENT SPECIFICATION OR STANDARD FORMAT.

UNDER DEPARTMENT OF DEFENSE POLICIES AND PROCEDURES, ANY QUALIFICATION REQUIREMENTS AND ASSOCIATED QUALIFIED PRODUCTS LISTS ARE MANDATORY FOR DOD CONTRACTS. ANY REQUIREMENT RELATING TO QUALIFIED PRODUCTS LISTS (QPL'S) HAS NOT BEEN ADOPTED BY SAE AND IS NOT PART OF THIS TECHNICAL REPORT.

SAENORM.COM : Click to view the full PDF of as85049-2

THIRD ANGLE PROJECTION



ISSUED 1998-08

PREPARED BY SUBCOMMITTEE AE-8C1

SAE The Engineering Society
For Advancing Mobility
INTERNATIONAL
Land Sea Air and Space®
400 Commonwealth Drive, Warrendale, PA 15096-0001

AEROSPACE STANDARD

CONNECTOR ACCESSORIES, ELECTRICAL, BACKSHELL, ENVIRONMENTAL,
CABLE SEALING, STRAIGHT, CATEGORY 1C
(FOR MIL-C-5015 SOLDER TYPE, V THREAD OF MS310X CLASSES
A, B, C OR K CONNECTORS)

AS85049/2
SHEET 1 OF 6

THE REQUIREMENTS FOR ACQUIRING THE PRODUCT DESCRIBED HEREIN SHALL CONSIST OF THIS SPECIFICATION SHEET AND THE ISSUE OF THE FOLLOWING SPECIFICATION LISTED IN THAT ISSUE OF THE DEPARTMENT OF DEFENSE INDEX OF SPECIFICATIONS AND STANDARDS (DODISS) SPECIFIED IN THE SOLICITATION: MIL-C-85049.

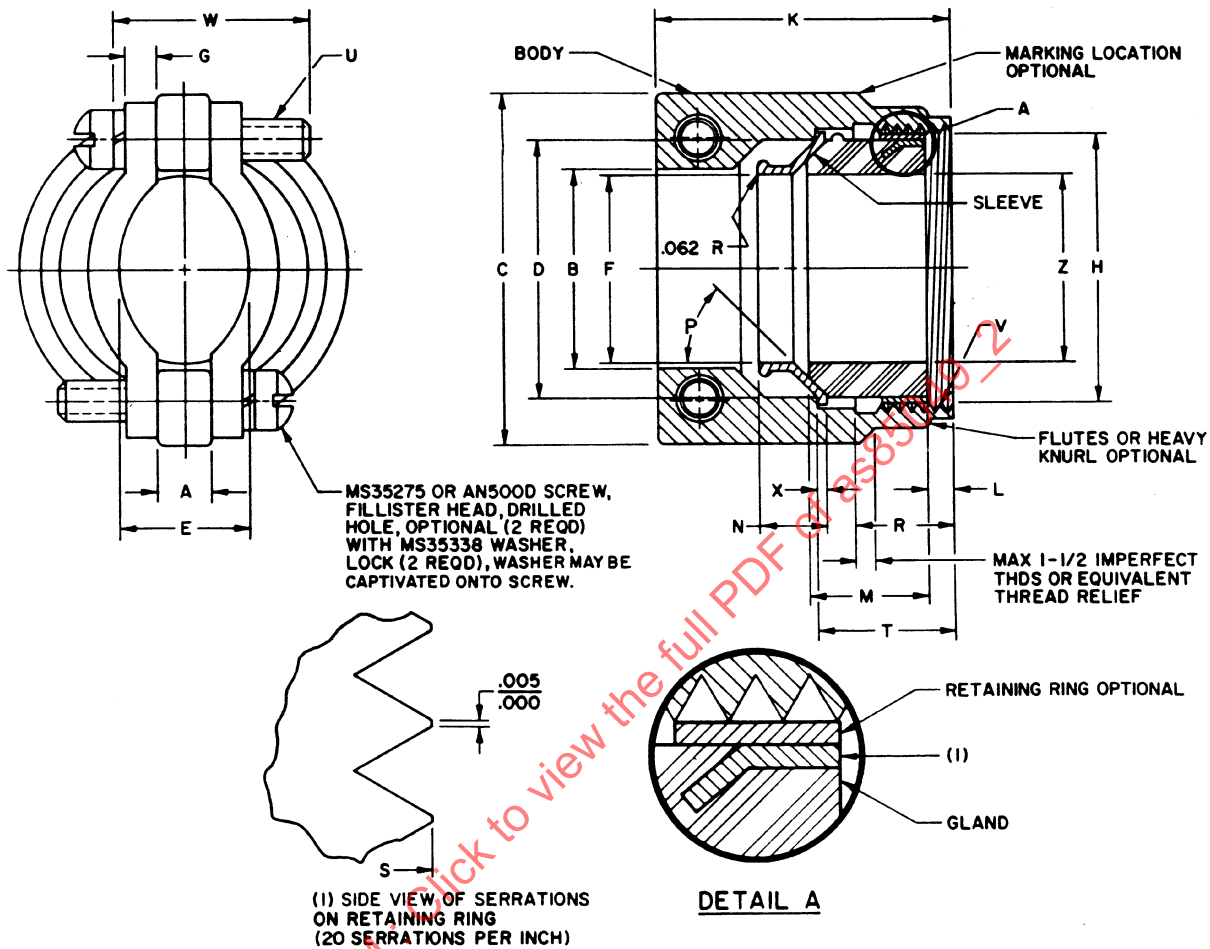


FIGURE 1. CONFIGURATION AND DIMENSIONS.

TABLE I. DIMENSIONS.

Dash No.	Connector Shell Size (Ref) 1/	A +.031 -.016	B Min Cable Clear- ance	C Max	D +.000 -.020 Dia Gland	E Max Closed	F +.020 -.000 Dia	G +.016 -	H +.000 -.020 Dia	K Max	L Min	M +.031 -	N	P Min	R Min
-3C	8S and 10S	.188	.239	.812	.389	.217	.231	.125	.441	1.375	.156	.473	.254	20°	.531
-4C	10SL, 12S and 12		.317	.937	.510	.296	.315		.560						
-6C	14S and 14		.443	1.062	.627	.390	.440		.676					.434	
-8C	16S and 16		.551	1.188	.744	.515	.800		.926						
-10C	18	.630	1.312	.870	.614	.926	.156	1.107	1.562	.625	.320	.537	.281	30°	
-12C	20 and 22	.250	.771	1.562	1.037	.596									.738
-16C	24 and 28		.959	1.750	1.286	.926		1.357	1.562	.188	1.920	2.062	.940	.406	35°
-20C	32	.312	1.271	2.250	1.590	.858		1.200	2.162						
-24C	36		1.396	2.375	1.844	1.363	1.920	2.062			.940	.406	35°		
-28C	40		1.646	2.625	2.083	1.107	1.611	2.162	.940					.406	35°
-32C	44	.375	1.896	2.812	2.332	1.421	1.865	2.412		2.188	.188	.500	.781		

Dash No.	T	U Thread	Fillister Head Screw		Screw Size	V Thread	W Min	Y	Z Dia Approx (Gland)		Bushing (Ref)	Max Cable Entry	MS35338 Washer, Lock Dash Number	
			AN5000 Dash No.	MS35275 Dash No.					Free	Closed				
-3C	.641	.138-32UNC-2A	6-8	230	(6-32)	.500-28 UNEF-2B	.469	.025 +.010 -.003	.219	.031	MS3420-3A	.219	136	
-4C			6-10	231		.625-24 UNEF-2B	.594		.312	.094	MS3420-4A	.312	136	
-6C			6-10	231		.750-20 UNEF-2B	.719		.438	.250	MS3420-6A	.438	136	
-8C			6-12	232		.875-20 UNEF-2B			.531	.312	MS3420-8A	.515	136	
-10C	.672	.164-32UNC-2A	6-12	232	(8-32)	1.000-20 UNEF-2B	.844	.032 +.012 -.003	.625	.375	MS3420-10A	.614	136	
-12C	.719		8-14	248		1.188-18 UNEF-2B			.750	.500	MS3420-12A	.738	137	
-16C	.797		8-18	NA		1.438-18 UNEF-2B	1.062		.938	.594	MS3420-16A	.926	137	
-20C			416-20	284		1.750-18 UNS-2B	1.187		1.250	.938	MS3420-20A	1.200	139	
-24C	1.016	.250-20UNC-2A	416-22	NA	(1/4-20)	2.000-18 UNS-2B	1.312	.051+.005	1.375	.969	MS3420-24A	1.363	139	
-28C	1.172		416-22	NA		2.250-16 UN-2B			1.625	1.138	MS3420-28A	1.611	139	
-32C			416-22	NA		2.500-16 UN-2B			1.875	1.375	MS3420-32A	1.865	139	

1/ Clamp mates with connector shell size listed in this column.
 NA = Not Available

AS85049/2

INCH	mm	INCH	mm	INCH	mm
0.003	0.08	0.510	12.95	1.172	29.77
0.005	0.13	0.515	13.08	1.187	30.15
0.010	0.25	0.531	13.49	1.188	30.18
0.012	0.30	0.537	13.64	1.200	30.48
0.013	0.33	0.551	14.00	1.250	31.75
0.016	0.41	0.560	14.22	1.271	32.28
0.025	0.64	0.562	14.27	1.286	32.66
0.031	0.79	0.594	15.09	1.312	33.32
0.032	0.81	0.596	15.14	1.357	34.47
0.051	1.30	0.614	15.60	1.363	34.62
0.0625	1.59	0.625	15.88	1.375	34.93
0.094	2.39	0.627	15.93	1.396	35.46
0.125	3.18	0.630	16.00	1.421	36.09
0.138	3.51	0.641	16.28	1.437	36.50
0.156	3.96	0.662	16.81	1.438	36.53
0.164	4.17	0.672	17.07	1.562	39.67
0.188	4.78	0.676	17.17	1.590	40.39
0.217	5.51	0.719	18.26	1.611	40.92
0.219	5.56	0.738	18.75	1.625	41.28
0.231	5.87	0.744	18.90	1.646	41.81
0.239	6.07	0.750	19.05	1.670	42.42
0.250	6.35	0.771	19.58	1.750	44.45
0.254	6.45	0.781	19.84	1.812	46.02
0.281	7.14	0.797	20.24	1.844	46.84
0.296	7.52	0.800	20.32	1.865	47.37
0.312	7.92	0.812	20.62	1.875	47.63
0.317	8.05	0.844	21.44	1.896	48.16
0.320	8.13	0.858	21.79	1.920	48.77
0.344	8.74	0.870	22.10	2.000	50.80
0.375	9.53	0.926	23.52	2.062	52.37
0.389	9.88	0.937	23.80	2.083	52.91
0.390	9.91	0.938	23.83	2.162	54.91
0.406	10.31	0.940	23.88	2.188	55.58
0.434	11.02	0.959	24.36	2.250	57.15
0.438	11.13	0.969	24.61	2.332	59.23
0.440	11.18	1.000	25.40	2.375	60.32
0.441	11.20	1.047	26.59	2.412	61.26
0.443	11.25	1.062	26.97	2.500	63.50
0.469	11.91	1.107	28.12	2.625	66.68
0.473	12.01	1.138	28.91	2.812	71.42
0.500	12.70				

AEROSPACE STANDARD

CONNECTOR ACCESSORIES, ELECTRICAL, BACKSHELL, ENVIRONMENTAL,
CABLE SEALING, STRAIGHT, CATEGORY 1C
(FOR MIL-C-5015 SOLDER TYPE, V THREAD OF MS310X CLASSES
A, B, C OR K CONNECTORS)

AS85049/2
SHEET 4 OF 6