



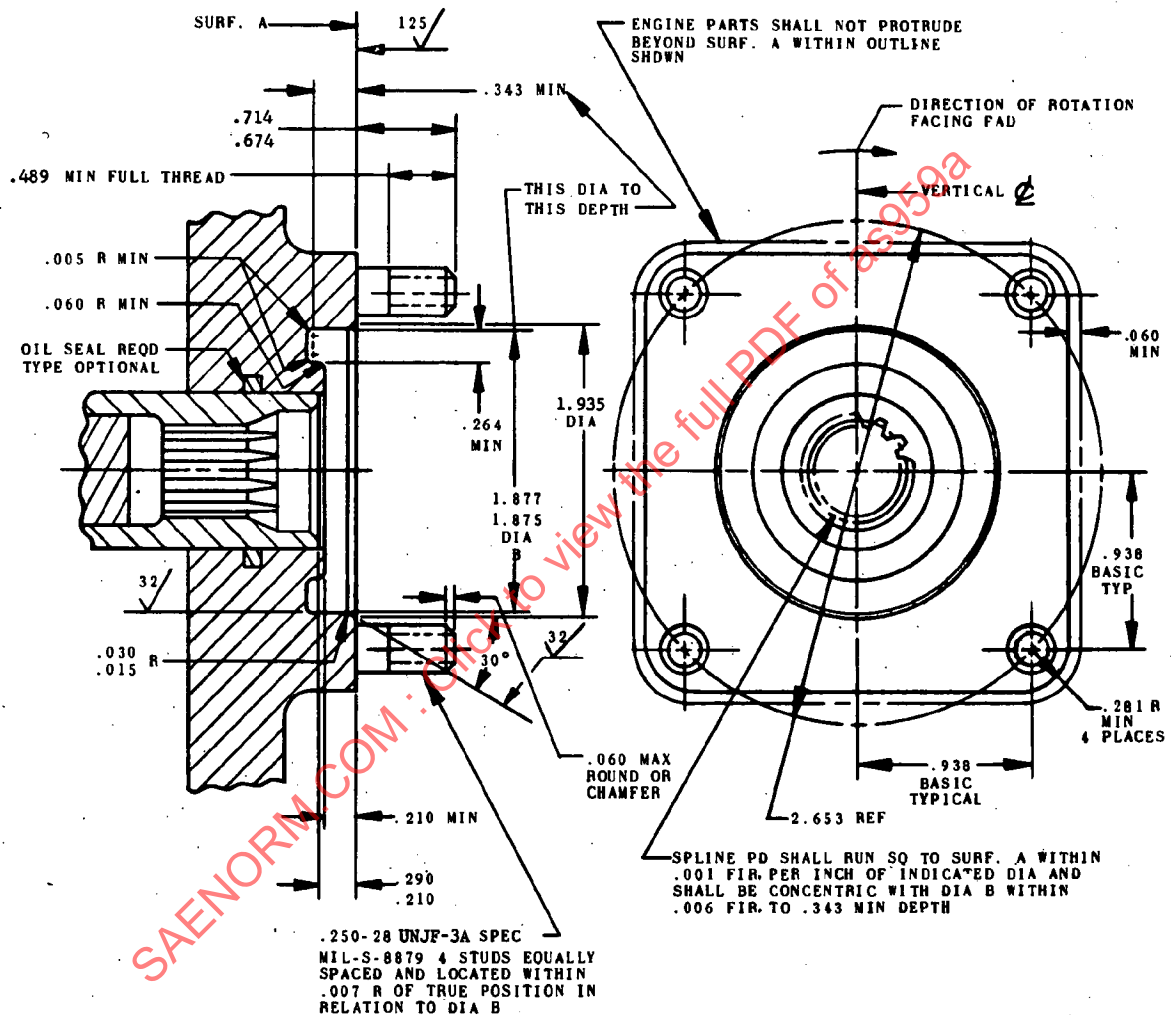
# AEROSPACE STANDARD

## AS 959A

Society of Automotive Engineers, Inc.  
TWO PENNSYLVANIA PLAZA, NEW YORK, N.Y. 10001

Issued 10-31-67  
Revised 10-1-69

### DRIVE - STUDDED, ACCESSORY, 2.653 BC SQUARE, DESIGN STANDARD FOR



(A)

DASH NO.	RATED TORQUE LB IN.	RATED SPEED RPM ± 5%	SPLINE SIZE PD	ACCESSORY	
				WEIGHT LB MAX	STATIC OVERHUNG MOMENT LB IN. MAX
-1CT	150	4000	8.4583	5	15
-2CT	150	8000	0.4583	5	15
-3CT	150	12000	0.4583	5	15
-4CT	150	16000	0.4583	5	15
-5CT	15	4200 ± 25	0.4583	5	15

SAE Technical Board rules provide that: "All technical reports, including standards approved and practices recommended, are advisory only. Their use by anyone engaged in industry or trade is entirely voluntary. There is no agreement to adhere to any SAE standard or recommended practice, and no commitment to conform to or be guided by any technical report. In formulating and approving technical reports, the Board and its Committees will not investigate or consider patents which may apply to the subject matter. Prospective users of the report are responsible for protecting themselves against infringement of patents."